



# DELUXE DUAL GLIDER WITH SQUARE BRACKETS



## ASSEMBLY INSTRUCTIONS

WARNING! For outdoor domestic use only

WARNING! Adult supervision required at all times.

WARNING! This item is to be assembled and disassembled by an adult.

WARNING! Head or other injuries may result when falling onto hard surfaces.

WARNING! Never place swing over concrete, asphalt, wood or other hard surfaces.

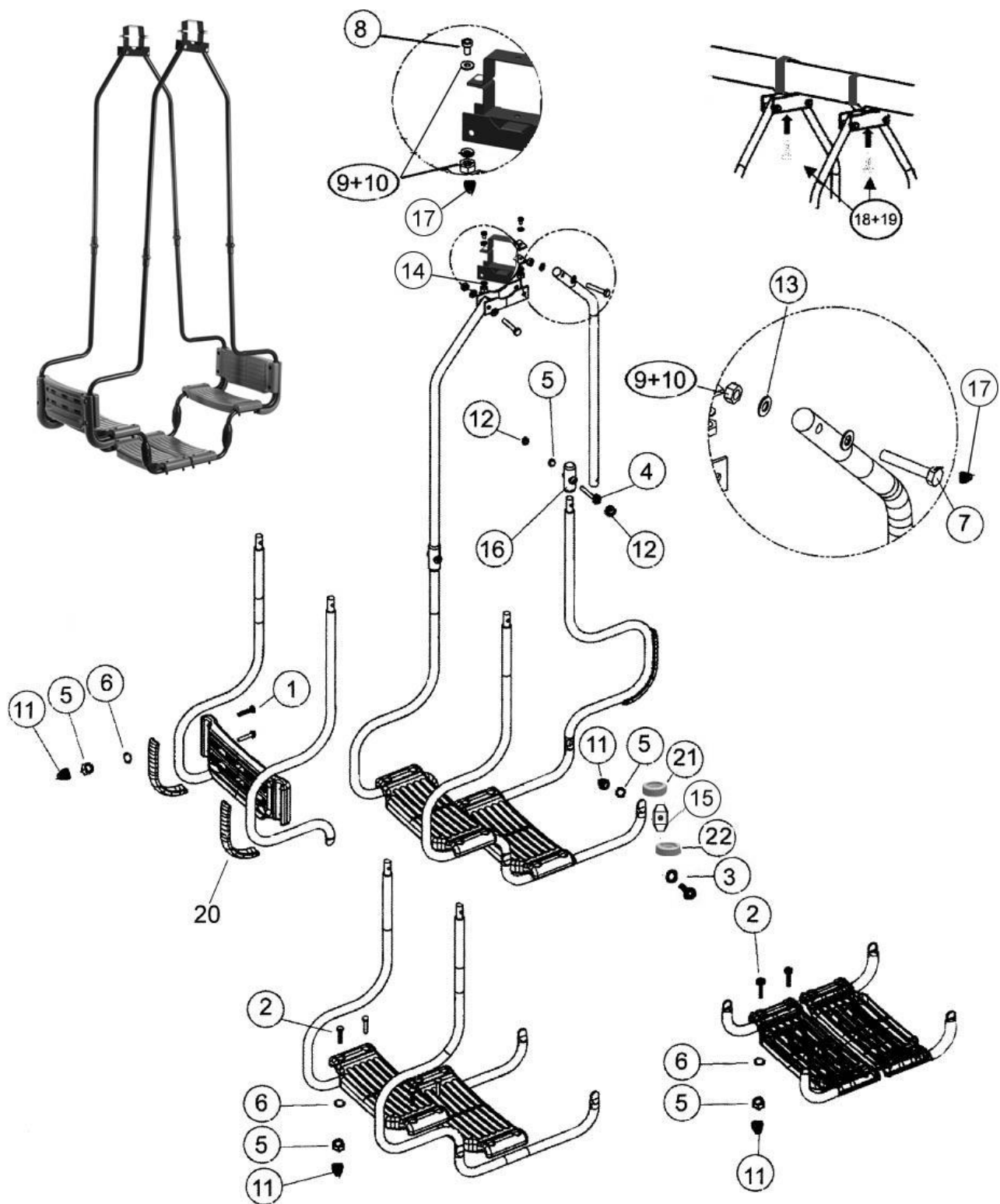
WARNING! Never leave children unattended.

WARNING! Max user weight 50kg.

WARNING! Not suitable for children under 36 months until fully assembled- small parts-choke hazard.

Age Range: 3-12 years

To be retained for future reference.



### Component Description

Ref	Description	Qty	Ref	Description	Qty
1	Flat six Angle Screws 6*40mm	8	11	M6 Plastic Cap	24
2	Flat six Angle Screws 6*35mm	16	12	Green small plastic cap for tube protect	16
3	Round Six Angle Screws 6*25mm	4	13	Black round plastic cap for top tube	4
4	Round Six Angle Screws 6*35MM	4	14	Black plastic cap for middle of square beam hook	8
5	M6 Metal Cap	32	15+21+22	Green plastic cap for bottom bend tube connecting	8
6	M6 Metal Nut	24	16	Green Plastic cap for top and bottom tube connecting	4
7	Carriage Bolts 8*55mm	4	17	M8 black plastic cap	8
8	Carriage Bolts 8*16mm	4	18+19	Square Beam Hook	2
9	M8 Metal Nut with Nylon	8	20	"moon design" Plastic tube Protect for bottom tube	4
10	M8 Metal plate	8			

### **AUSTRALIAN CONSUMER LAW**

Many of our products come with a guarantee or warranty from the manufacturer. In addition, they come with guarantees that cannot be excluded under the Australian Consumer Law. You are entitled to a replacement or refund for a major failure and compensation for any other reasonably foreseeable loss or damage.

You are entitled to have the goods repaired or replaced if the goods fail to be of acceptable quality and the failure does not amount to a major failure.

Full details of your consumer rights may be found at [www.consumerlaw.gov.au](http://www.consumerlaw.gov.au)

Please visit our website to view our full warranty terms and conditions:

<http://www.lifespankids.com.au/Warranty-Policy-Kids>

Please email us at [support@lifespankids.com.au](mailto:support@lifespankids.com.au) for all warranty or support issues.