



SOMERSET

Wooden Swing Set

Model: #65012



- Owner's Manual
- Frequently Asked Questions
- Assembly Instructions
- Warranty Information

Features the **SAFE-T-FUSE** fastening system.

Save this assembly manual for future reference in the event that you need to order replacement parts.



Free BILT Intelligent Instructions®
Download on <https://biltapp.com/>
Available on Apple and Google Play

Made in China

GENERAL SAFETY INSTRUCTIONS

PURPOSE

This product is intended for outdoor, domestic use only. It is not suitable for commercial or medical use.

DANGER FOR CHILDREN

- **WARNING! No eating while using the product**
- This product may only be used with adult supervision at all times.
- The packaging material is not suitable for children due to choking and suffocation hazards.

RISK OF INJURIES

- Do not use the product if it is damaged or defective. If it is damaged or defective, please contact a qualified technician.
- Check the product before each use. Defective parts must be changed immediately as they can impair the function and the safety of the product.
- No more than one person per swing or per attachment.
- Use the product only on even and non-slipping surfaces. Never use it near water and keep sufficient space around for safety.

PRODUCT DAMAGE

- Do not make alterations to the product. Only use original spare parts. Qualified technicians should only carry out repairs – improper repairs can lead to danger for the user. Use this product only as described in this manual.
- Protect the product against splashes, humidity, high temperature and direct sunlight.

ASSEMBLY ADVICE

- The assembly of the product must be done carefully and by an able-bodied adult. If in any doubt, ask a technically qualified person.
- Before you start with the assembly, read the instructions carefully.
- Remove all packaging materials and lay down all parts on an open space. This gives you an overview and simplifies the assembly procedure.
- Check with the parts list that all parts are available. Dispose of the packaging material when the assembly is completed.
- Beware that when using tools or doing technical work, there is always a risk of injuries. Assemble the product with care.
- Create a danger free environment; for example, do not let tools lay around the workspace. Store the packaging material in a way that cannot cause any danger.
- After installing the product according to the instruction manual, ensure all screws, bolts and nuts are correctly installed and tightened and that all joints are secure.
- Reasonable space must be kept between the product and possible sources of danger, such as other equipment swimming pools and fences.
- The product must be assembled correctly before use.
- Place the product on a level surface at least 2 m from any structure or obstruction such as a fence, garage or house.
- No modifications are to be made to the original product.
- The product must always be used in a well-lit area.
- Do not place anything under the product.
- Use gloves during assembly and disassembly.
- Outdoor products should be equipped with a device that in strong wind conditions avoid displacement due to wind (e.g. steel bars in the ground or loads like sand bag or water bags).

- In certain areas during winter, snow buildup and the low temperatures can damage the product. It is recommended to remove snow buildup and to store the product indoor.
- We strongly recommend visual inspections every 3 months to insure the integrity of the entire product. Replace any parts as necessary.

SAFETY INSTRUCTIONS

- The safety instructions of the product should always be considered and obeyed.
- Using the product may result in permanent injury such as paralysis, or even death. Falling off the product may lead to injuries, particularly to the back, neck or head.
- No clothes with hooks or lose parts should be worn or carried during product usage in order to avoid hooks getting caught and causing injury.
- Moving the product whilst assembled may affect the integrity of the frame. Should it be necessary to move the product, please consider the following:
 - 1.) Force to be evenly spaced around the frame to lift the product off the ground
 - 2.) The product must be carried horizontally
 - 3.) Use caution whilst moving as it could bend the product frame.
- Users should be familiar with the assembly manual. This manual contains assembly guidance; selected precautionary measures as well as recommendations for servicing and maintenance of the product, in order to ensure safe and fun usage.
- It is the responsibility of the owner or the supervisor to guarantee that all users of the product are informed sufficiently of all warning references and safety instructions.

For the supervisor:

The supervisor's role is to make sure users are aware of all safety precautions and that these precautions are enforced. When a supervisor is not available, the product may be disassembled or covered to limit access.

- The product can be only used if it is in good condition, worn or damaged parts should be replaced.
- Objects, which could be dangerous to the user, should be away from the product
- Avoid unauthorized and unsupervised use of the product.
- Do not use the product under influence of alcohol or drugs (incl. medicines).
- Do not use the product or its attachments as a jumping platform.

Consumer Information Sheet for Playground Surfacing Materials

The US Consumer Product Safety Commission (CPSC) estimates that about 100 000 playground equipment-related injuries resulting from falls to the ground surface are treated annually in US hospital emergency rooms. Injuries involving this hazard pattern tend to be among the most serious of all playground injuries, and have the potential to be fatal, particularly when the injury is to the head. The surface under and around playground equipment can be a major factor in determining the injury-causing potential of a fall. It is self-evident that a fall on to a shock-absorbing surface is less likely to cause a serious injury than a fall onto a hard surface. Playground equipment should never be placed on hard surfaces, such as concrete or asphalt, and while grass may appear to be acceptable, it may quickly turn to hard-packed earth in areas of high traffic. Shredded bark mulch, wood chips, tine sand or the gravel are considered to be acceptable shock absorbing surfaces when installed and maintained at a sufficient depth under and around playground equipment.

Table B.1 lists the maximum height from which a child would not be expected to sustain a life-threatening head injury in a fall on to four different loose-fill surfacing materials if they are installed and maintained at depths of 150 mm, 225 mm and 300 mm.

Table B.1: Fall height in millimetres from which a life-threatening head injury would not be expected

Type of Material	Depth of surfacing material		
	150mm	225mm	300mm
Double Shredded Bark Mulch	1800	3000	3300
Wood Chips	1800	2100	3600
Fine Sand	1500	1500	2700
Fine Gravel	1800	2100	3000

However, it should be recognised that all injuries due to falls cannot be prevented, no matter what surfacing material is used.

It is recommended that a shock absorbing material extend a minimum of 1 800 mm in all directions from the perimeter of stationary equipment such as climbing frames and slides. However, because children may deliberately jump from a moving swing, the shock absorbing material should extend in the front and rear of a swing a minimum distance of twice the height of the pivot point measured from a point directly beneath the pivot on the supporting structure.

This information is intended to assist in comparing the relative shock-absorbing properties of various materials. No particular material is recommended over another. However, each material is only effective when properly maintained. Materials should be checked periodically and replenished to maintain correct depth as determined necessary for the equipment in question. The choice of a material depends on the type and height of the playground equipment, the availability of the material in a particular area, and its cost.

WOOD ADVICE

Our products are manufactured from premium timber. Great care is taken in selecting, machining and treating the timber before it is sold to you.

1. Inspect wood parts monthly. The grain of the wood sometimes will lift in dry periods causing splinters to appear. Light sanding may be necessary to maintain a safe environment. Treating your Product with protection (sealant) after sanding will help prevent severe checking/splitting and other weather damage.
2. We have applied a waterborne translucent stain to your unit. This is done for colour only. Once or twice a year, depending on your climate conditions, you must apply some type of protection (sealant) to the wood of your unit. Prior to the application of sealant, lightly sand any "rough" spots on your set. Please note this is a requirement of your warranty.

Bear in mind that timber is a natural product and may experience changes throughout the course of its life.

It may:

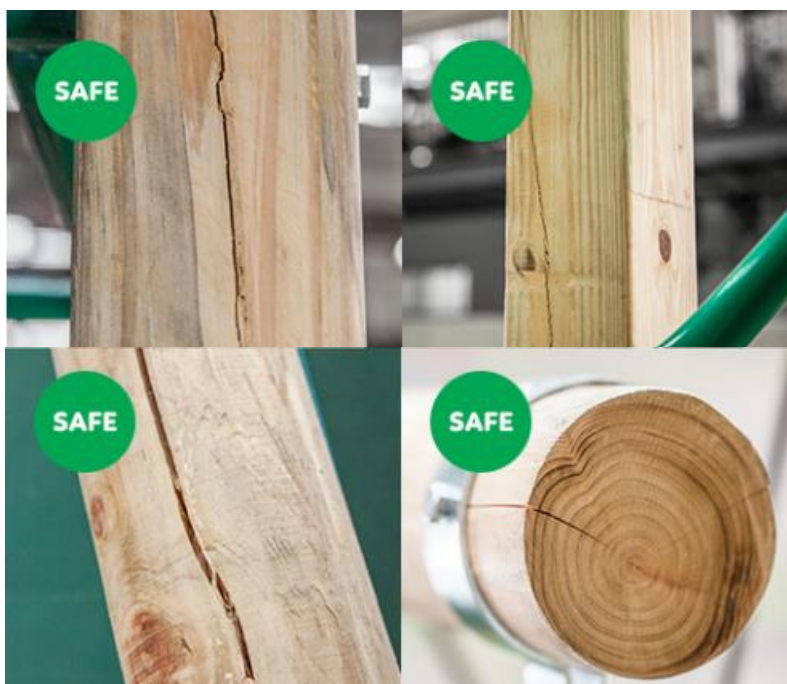
- Develop openings/checks (gaps, slits, apertures, cracks) along the line of the grain.
- Fade as the timber reacts with sunlight.

All woods are hygroscopic, that is, it will absorb or discharge moisture to attain equilibrium with the surrounding atmosphere. Timber openings/checks occur due to the moisture content between internal and outer surfaces of the timber. No two pieces of wood are exactly alike. Each piece has its own characteristics and personality and reacts differently to climate changes. When any wood products are exposed to the elements, it develops 'wood checks'. A check is the radial separation of the wood fibres running with the grain of the wood. These are caused by the varying temperature and moisture conditions. A check does not affect the strength or durability of the wood or structural integrity of the play set.

When should wood cracks be a concern?

Most of the wood splits will never become large enough to affect the reliability and strength of our products, however, there can be rare cases where splits can occur. This happens when a crack develops past the halfway point from the timber, splitting it into two separate pieces.

Feel free to contact us with detailed pictures of your product so we can assess and ensure that your playground remains safe.



Dimensional timbers contain very little heart wood so less splits can be seen.

Round pole swing set are very thick so that cracks (shown left) will not affect the strength and durability of our swing sets.

RECOMMENDATIONS:

- The swing frame must be securely attached.
- For safety reasons, the cement cubes must be poured 5cm below ground level, at the frame's outer angles.

- The swing frame must not be installed directly on cement, asphalt, or any other hard surface.
- Your swing frame must be attached on a flat horizontal surface with a minimum of 2m between it and any structure or obstacle such as a fence, garage house, tree branches, cloths lines, or electric cables.

For more information: <http://www.lifespankids.com.au/natural-timber>

Play Set Assembly Manual FAQs:

1. Does the area for the playset need to be level?

Yes. we recommend the playset be positioned on a flat level area for maximum safety and durability. The stakes provided should be used to secure it firmly to the ground.

2. What age range is appropriate for the playsets?

The playsets are recommended for children ages 3 – 10 years.

3. Is the wood treated with chemicals?

We use 100% Chinese Cedar wood which is naturally bug resistant, decay and rot resistant. To help ensure your child's safety, our wood is completely chemical free and we do not use pressure-treated wood. The stain we use is a top coat using a water-based product that is for appearance only.

4. How often should the playset be stained?

We recommend the playset be stained once each year. A water or oil based stain can be used at the customer's discretion.

5. Why does it seem that my swing set is developing cracks?

Wood is a natural material; no two pieces are exactly alike. Each piece has its own characteristics and personality and reacts differently to climate changes. When any wood product is exposed to the elements, it develops "wood checks". A check is the radial separation of the wood fibers running with the grain of the wood. These are caused by the varying temperature and moisture conditions. A check is not a crack – it does not affect the strength or durability of the wood or structural integrity of the play set.

6. Do the playsets come with a warranty?

Yes. All Lifespan Kids products carry replacement warranty on all parts for manufacturer's defect. Please see warranty details for more information.

7. What is the best way to get started assembling the playset?

We recommend taking all the parts out of the boxes and arranging them by part number before you begin any assembly. This will not only allow faster assembly, but will also identify any parts that may be missing or damaged so they can be replaced before assembly.

8. The playset seems to rock or sway too much. What's wrong?

Rocking is caused by uneven ground or obstructions such as rocks, roots, etc. under the ground rails. These should be removed and the ground underneath re-leveled to prevent rocking. Also ensure the playset is securely staked to the ground using the anchors provided.

9. The 2"x4" boards do not measure 2"x 4". Why not?

In it is common practice to describe lumber dimensions using the rough cut sizes from the sawmill and not the finished dimensions. Retailers, home stores, etc. all use this accepted practice for describing lumber dimensions. However, the playset is designed and constructed using the actual dimensions so everything fits properly and remains so during the life of the playset.

10. The end beam is not straight up and down. Why not?

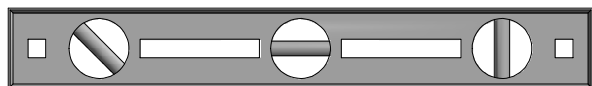
This is normal. Backyard Discovery designs playsets this way to ensure the strongest structure possible. The slight angle adds strength and reduces rocking and twisting.

11. The S-hooks for the swings won't close. What is wrong?

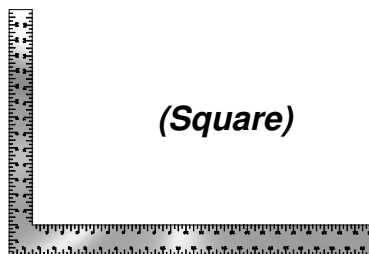
We recommend placing them on a hard surface such as concrete (don't do this on anything that will dent such as metal or finished wood or glass which will break!). It will take quite a few strokes, but the hooks will close.

Tools Required for Installation:

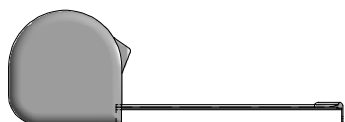
(These are the tools that are generally required for assembly of our outdoor products. These tools are not included with the outdoor product purchase.)



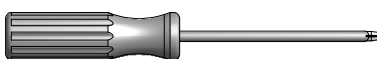
(Level 24")



(Square)



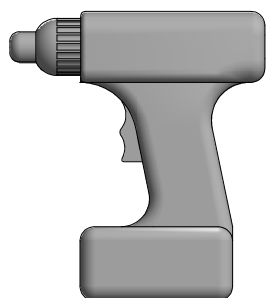
(Tape Measure)



(Phillips Screw Driver)



(Claw Hammer)



(Cordless Drill or Electric Drill)



(1/8" & 3/8" Drill Bits)



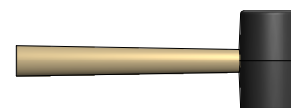
(Drill Attachments: Socket Driver)



(Ladder)



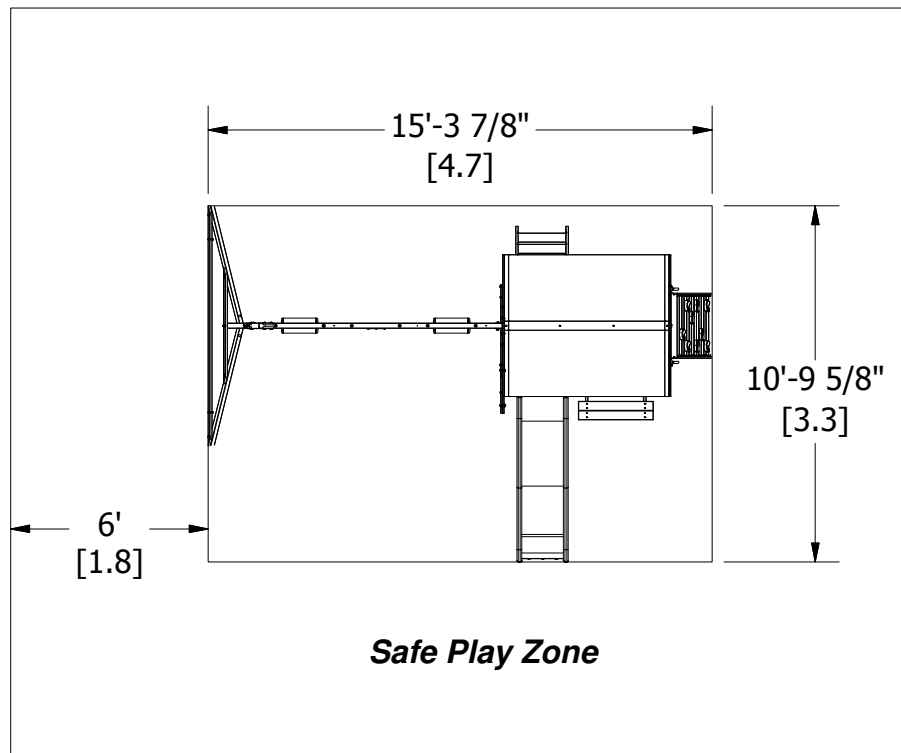
(An Adult w/ an Adult Helper)



(Rubber Mallet - Optional)

Basic Setup Dimensions

Place the set on level ground, not less than 6 ft [2 m] from any structure or obstruction such as a fence, garage, house, overhanging branches, laundry lines, or electrical wires.



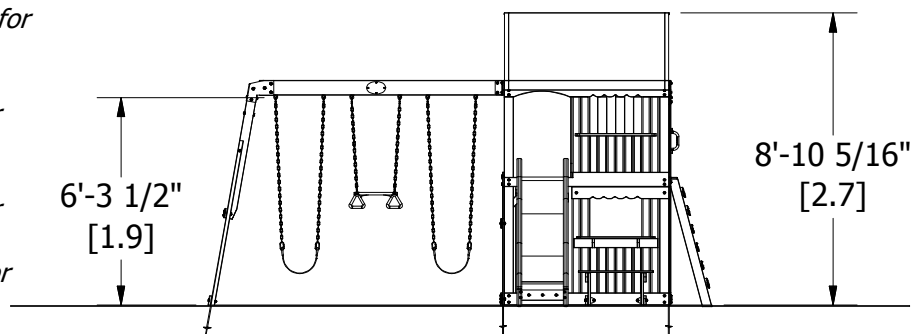
General Information:

Your set has been designed and engineered for children only and for residential use only.

A maximum of 150 lbs. per child is recommended for play activities designed for individual use.

A maximum of 120 lbs. per child is recommended for play activities designed for multiple child use.

A maximum of 9 children is recommended for this swing set.



Important Assembly Notes

Safe play height: 14'-11 1/2" [2.7 m]
Maximum fall height: 6'-4 1/2" [1.9 m]

- 1) While assembling unit, take time before and after each phase to make sure fort is level. If fort is not level, assembly will be difficult and improper assembly may result. Extra care must be taken to insure the fort is square.
- 2) Tighten bolts securely, tighten nuts on bolts flush to the tube or member, and place caps over exposed bolts snug to the nut.
- 3) Pay close attention to the ITEMS NEEDED FOR EACH PHASE. They can be a valuable aid when sorting your wood and hardware. Assembly will be made easier if items are sorted by phase.
- 4) Pay close attention to make sure you are using the correct hardware in the correct phases. Using incorrect hardware may result in improper assembly.
- 5) Whenever a T-nut is used, follow these directions. Place T-nut in pre-drilled hole. Tap in with hammer. Place bolt with washers in the opposite side. Hand tighten to make sure the bolt is in the T-nut. DO NOT over tighten.
- 6) Read the steps of each phase thoroughly. The written steps may include important information not shown in the illustrations.

Parts Identification

Wood Components

(NOT TO SCALE)



- (1) **E1 - UPRIGHT - W101261**
1 3/8"x3 3/8"x81 3/4" (36x86x2076)



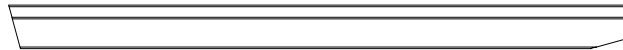
- (2) **E2 - UPRIGHT - W101260**
1 3/8"x3 3/8"x81 3/4" (36x86x2076)



- (1) **E3 - UPRIGHT - W101256**
1 3/8"x3 3/8"x81 3/4" (36x86x2076)



- (2) **E77 - ANGLE BRACE - W100991**
1 3/8"x3 3/8"x74 3/8" (36x86x1890)



- (1) **E82 - LEFT RAIL - W101127**
1 3/8"x3 3/8"x48 3/4" (36x86x1239)



- (1) **E83 - RIGHT RAIL - W101128**
1 3/8"x3 3/8"x48 3/4" (36x86x1239)



- (6) **F71 - STANDARD ANGLE BRACE - W100689**
1 3/8"x2 3/8"x13" (36x60x330)



- (1) **H1 - SERVING SHELF SUPPORT - W101604**
1"x3 3/8"x30 3/4" (24x86x780)



- (2) **H3 - SERVING BOARD SUPPORT - W101606**
1"x3 3/8"x3 3/8" (24x86x86)



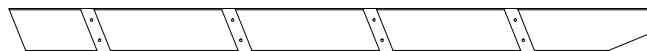
- (2) **H4 - BENCH SEAT SUPPORT - W104040**
1"x3 3/8"x6 1/2" (24x86x166)



- (2) **H5 - BENCH UPRIGHT - W104041**
1"x3 3/8"x11 3/4" (24x86x300)



- (2) **H6 - BENCH GROUND BOARD - W104042**
1"x3 3/8"x18 1/8" (24x86x460)



- (1) **H74 - LEFT UPRIGHT - W100608**
1"x3 3/8"x50 3/4" (24x86x1290)



- (1) **H75 - RIGHT UPRIGHT - W100609**
1"x3 3/8"x50 3/4" (24x86x1290)

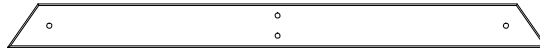
Parts Identification

Wood Components

(NOT TO SCALE)



- (4) **H76 - LADDER RUNG - W100611**
1"x3 3/8"x18 1/8" (24x86x460)



- (1) **H79 - END SUPPORT - W100992**
1"x3 1/2"x42" (24x86x1072)



- (1) **H80 - GROUND BOARD - W100990**
1"x3 3/8"x87 3/8" (24x86x2218)



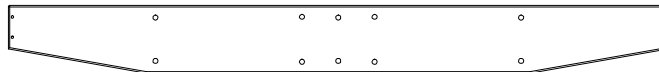
- (1) **J1 - WINDOW LEDGE - W100709**
1"x2 3/8"x29 1/2" (24x60x750)



- (4) **J2 - END FLOOR CLEAT - W100710**
1"x2 3/8"x3 3/8" (24x60x86)



- (1) **J3 - FLOOR JOIST - W100984**
1"x2 3/8"x60 1/8" (24x60x1528)



- (1) **K1 - ROOF SWING BEAM SUPPORT - W100682**
5/8"x5 1/4"x51 5/8" (16x134x1310)



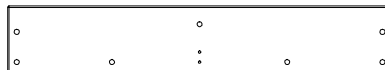
- (1) **K2 - ROOF SUPPORT - W100683**
5/8"x5 1/4"x51 5/8" (16x134x1310)



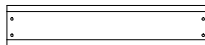
- (1) **K3 - SERVING BOARD - W101605**
5/8"x5 1/4"x28 3/4" (16x134x729)



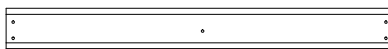
- (1) **K4 - FLOOR RAIL - W103700**
5/8"x5 1/4"x60 1/8" (16x134x1528)



- (1) **K5 - FLOOR RAIL - W103705**
5/8"x5 1/4"x30" (16x134x762)



- (6) **K9-1 - WALL BOARD - W100713**
3/8"x3 3/8"x15 3/4" (11x86x400)

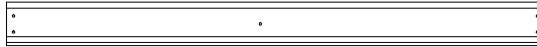


- (4) **K9-2 - WALL BOARD - W100712**
3/8"x3 3/8"x30 1/4" (11x86x768)

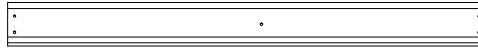
Parts Identification

Wood Components

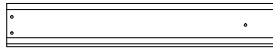
(NOT TO SCALE)



- (2) **K9-3 - WALL BOARD - W101257**
3/8"x3 3/8"x42" (11x86x1068)



- (2) **K9-4 - WALL BOARD - W101239**
3/8"x3 3/8"x37 3/8" (11x86x950)



- (6) **K9-5 - WALL BOARD - W101259**
3/8"x3 3/8"x21 3/8" (11x86x544)



- (2) **L2 - GROUND BOARD - W100684**
5/8"x4 3/8"x60 1/8" (16x112x1528)



- (1) **L3 - GROUND BOARD - W101602**
5/8"x4 3/8"x46 7/8" (16x112x1191)



- (1) **L5 - GROUND BOARD - W100686**
5/8"x4 3/8"x30" (16x112x762)



- (1) **L6 - ARCHED RAIL - W100694**
5/8"x4 3/8"x60 1/8" (16x112x1528)



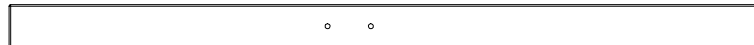
- (1) **L7 - ARCHED SCULPTURED RAIL - W100695**
5/8"x4 3/8"x60 1/8" (16x112x1528)



- (1) **L8 - SCULPTURED RAIL - W101240**
5/8"x4 3/8"x35 1/2" (16x112x902)



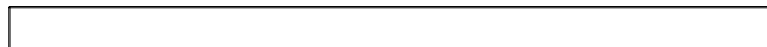
- (2) **L9 - END FLOOR BOARD - W102863**
5/8"x4 3/8"x29 7/8" (16x112x760)



- (1) **M1 - TENT SUPPORT - W101601**
5/8"x3 3/8"x59 1/4" (16x86x1504)



- (2) **M2 - BENCH SEAT - W104044**
5/8"x3 3/8"x27 3/8" (16x86x694)



- (2) **M3 - TARP SUPPORT - W100692**
5/8"x3 3/8"x60 1/8" (16x86x1528)



- (1) **M4 - TARP TOP SUPPORT - W100693**
5/8"x3 3/8"x60 1/8" (16x86x1528)

Parts Identification

Wood Components

(NOT TO SCALE)



- (2) **M5 - FACE BOARD - W101599**
5/8"x3 3/8"x43 1/8" (16x86x1094)



- (2) **M6 - LOWER FACE BOARD - W101598**
5/8"x3 3/8"x38 5/8" (16x86x982)



- (1) **M7 - WALL BOARD - W100708**
5/8"x3 3/8"x35 1/4" (16x86x895)



- (1) **M8 - WALL RAIL - W100700**
5/8"x3 3/8"x35 7/8" (16x86x910)



- (1) **M9 - ANGLE BRACE - W100696**
5/8"x3 3/8"x35 5/8" (16x86x904)



- (1) **M10 - SAFETY BOARD - W100701**
5/8"x3 3/8"x33 7/8" (16x86x860)



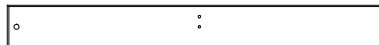
- (2) **M11 - UPPER FACE BOARD - W102866**
5/8"x3 3/8"x26 5/8" (16x86x676)



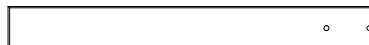
- (1) **M12 - ROCK WALL ARCH BOARD - W102862**
5/8"x3 3/8"x30" (16x86x762)



- (1) **M13 - FLOOR RAIL - W102867**
5/8"x3 3/8"x60 1/8" (16x86x1528)



- (1) **M14 - FLOOR SUPPORT BOARD - W101269**
5/8"x3 3/8"x30" (16x86x762)



- (1) **M16 - TARP SUPPORT - W101237**
5/8"x3 3/8"x29 1/8" (16x86x740)



- (4) **M17 - PICKET - W100705**
5/8"x3 3/8"x27 1/8" (16x86x690)



- (1) **M73 - REAR SUPPORT - W100610**
5/8"x3 3/8"x19 1/4" (16x86x488)

Parts Identification

Wood Components

(NOT TO SCALE)



- (1) **M77 - SLIDE BRACE - W100544**
5/8"x3 3/8"x17 1/4" (16x86x438)



- (2) **M78 - CENTER SLIDE BRACE - W100545**
5/8"x3 3/8"x17 1/4" (16x86x438)



- (8) **M81 - ROCK WALL BOARD - W101130**
5/8"x3 3/8"x22 3/8" (16x86x568)



- (3) **M82 - ROCK WALL BOARD - W4L05551**
5/8"x3 3/8"x22 3/8" (16x86x568)



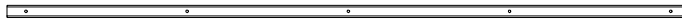
- (3) **M83 - ROCK WALL BOARD - W4L05552**
5/8"x3 3/8"x22 3/8" (16x86x568)



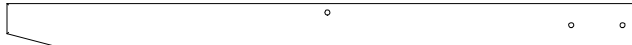
- (1) **N72 - ROCK WALL END BOARD - W101129**
5/8"x2 3/8"x23 5/8" (16x60x600)



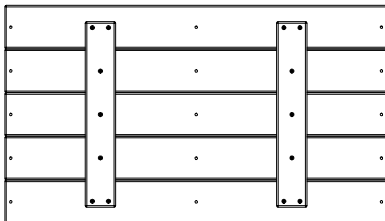
- (1) **SB74 - SWING BEAM EXTENDED - W102419**
2"x5 1/4"x89 1/2" (50x134x2274)



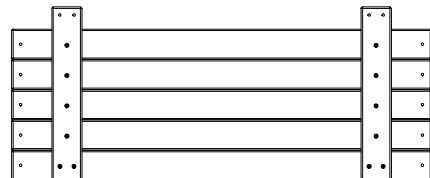
- (2) **SP1 - FLOOR SUPPORT CLEAT - W100711**
1"x1"x53 3/8" (24x24x1356)



- (1) **W71 - SWING BEAM SUPPORT - W102420**
2"x3 3/8"x49 5/8" (50x86x1260)



(3) **FP1 - FLOOR PANEL - W102861**



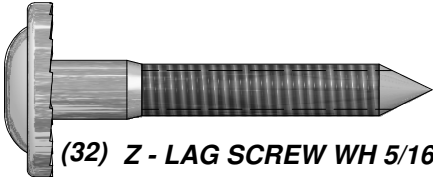
(2) **WP1 - WALL PANEL - W102865**

Parts Identification

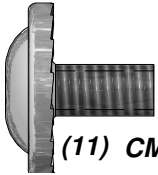
Hardware



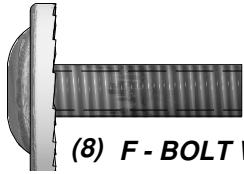
(11) AA - LAG SCREW WH 5/16x2 1/2 - H100028



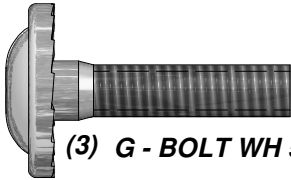
(32) Z - LAG SCREW WH 5/16x2 - H100027



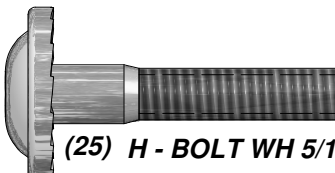
(11) CM - BOLT WH 5/16x1/2 - H100115



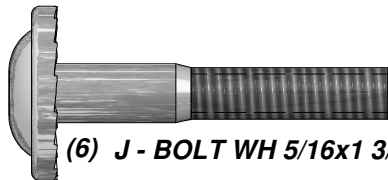
(8) F - BOLT WH 5/16x1 - H100008



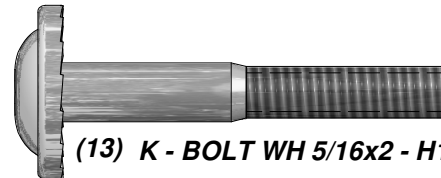
(3) G - BOLT WH 5/16x1 1/4 - H100009



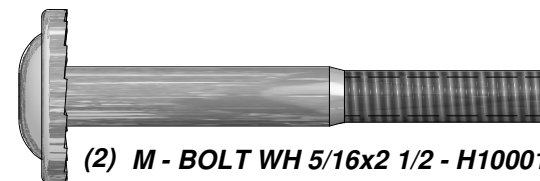
(25) H - BOLT WH 5/16x1 1/2 - H100010



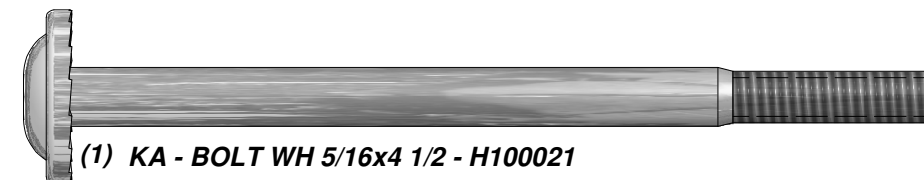
(6) J - BOLT WH 5/16x1 3/4 - H100011



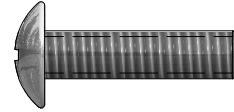
(13) K - BOLT WH 5/16x2 - H100012



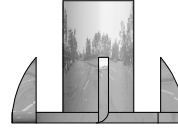
(2) M - BOLT WH 5/16x2 1/2 - H100014



(1) KA - BOLT WH 5/16x4 1/2 - H100021



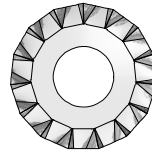
(7) AY - BOLT PTH 1/4x1 - H100061



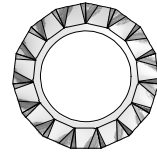
(20) BG - T-NUT 5/16 - H100074



(26) BE - T-NUT 1/4 - H100072



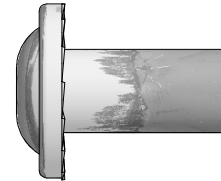
(48) AD - WASHER LOCK EXT 12x19 - H100031



(92) AC - WASHER LOCK EXT 8x19 - H100030



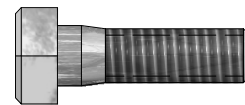
(13) B - NUT BARREL WH 5/16x5/8 - H100004



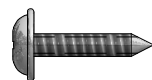
(37) D - NUT BARREL WH 5/16x7/8 - H100005



(2) AN - BOLT HEX 5/16x2-3/4 - H100047



(4) AG - BOLT HEX 5/16x1 - H100040



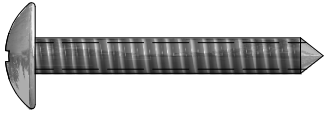
(7) CY - SCREW PWH 8x5/8 - H100128

Parts Identification

Hardware



(13) CT - SCREW TAPPING 8x1/2 - H100123



(2) CH - SCREW TAPPING 14x1-1/2 - H100109



(60) BN - SCREW PFH 8x1 - H100085



(50) BR - SCREW PFH 8x1 1/8 - H100088



(24) BQ - SCREW PFH 8x1 1/4 - H100087



(180) BP - SCREW PFH 8x1 1/2 - H100086



(28) BS - SCREW PFH 8x1 3/4 - H100089



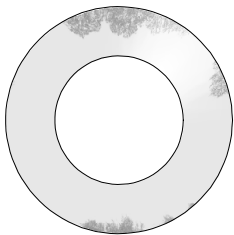
(39) CK - SCREW PFH 8x2 - H100111



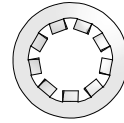
(9) BV - SCREW PFH 8x2 1/4 - H100091



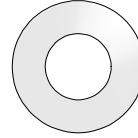
(26) BT - SCREW PFH 8x2 1/2 - H100090



(7) CB - WASHER SAFETY 17x30 - H100103

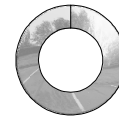


(28) CG - WASHER LOCK INT 8x15 - H100108

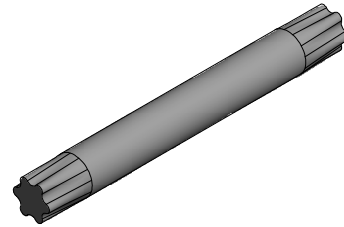


(15) CE - WASHER FLAT 9x18 - H100106

(2) - T-40 TORX WRENCH - A100041



(4) BX - WASHER SPLIT 5/16 - H100095



(2) - T-40 TORX BIT - A100042



(15) CD - WASHER FLAT 8x27 - H100105



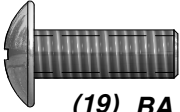
(9) CJ - NUT LOCK 5/16 - H100110



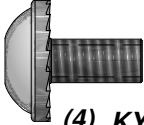
(6) BZ - SWING HANGER QUICK LINK - H100099

Parts Identification

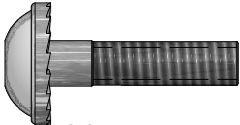
Hardware



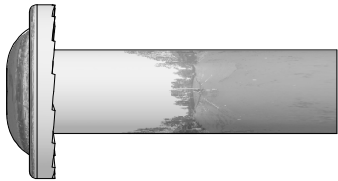
(19) BA - BOLT PTH 1/4x3/4 - H100063



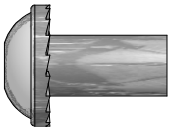
(4) KY - BOLT WH 1/4x1/2 - H100141



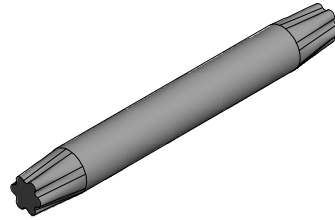
(2) KT - BOLT WH 1/4x1 - H100137



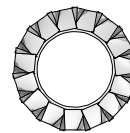
(2) C - NUT BARREL WH 5/16x1 1/2 - H100006



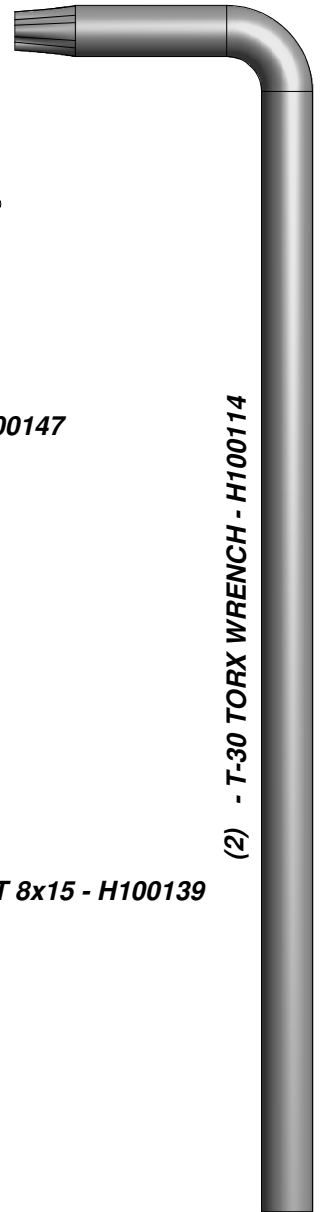
(7) KS - NUT BARREL WH 1/4x5/8 - H100136



(2) - T-30 TORX BIT - H100147



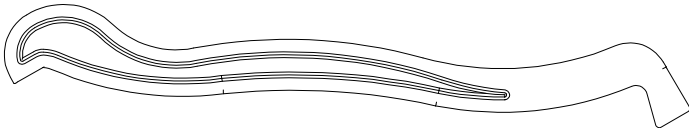
(7) KW - WASHER LOCK EXT 8x15 - H100139



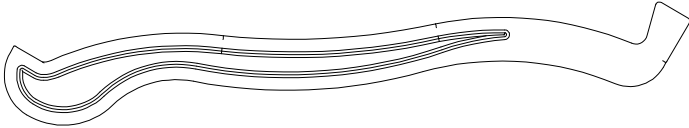
(2) - T-30 TORX WRENCH - H100114

Parts Identification

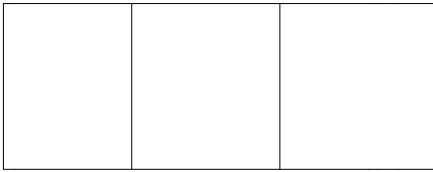
Accessories (NOT TO SCALE)



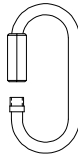
(1) **EK - SLIDE RAIL 8' GREEN RIGHT - A100054**



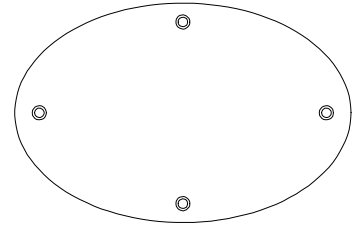
(1) **EL - SLIDE RAIL 8' GREEN LEFT - A100055**



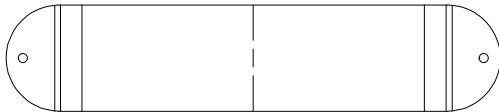
(1) **EM - SLIDE BED 8' YELLOW - A100056**



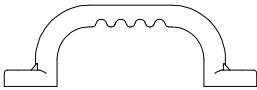
(6) **FA - QUICK LINK
-A100069**



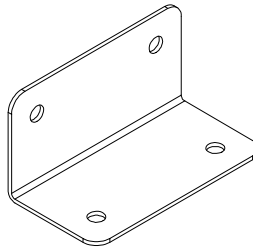
(1) **HC - BYD ID TAG (LARGE) 2011 WITH
AGES
-A100164**



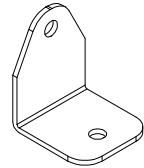
(2) **FB - SWING SEAT YELLOW - A100070**



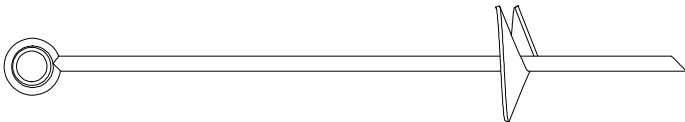
(4) **EA - HAND GRIP YELLOW PLASTIC
-A100043**



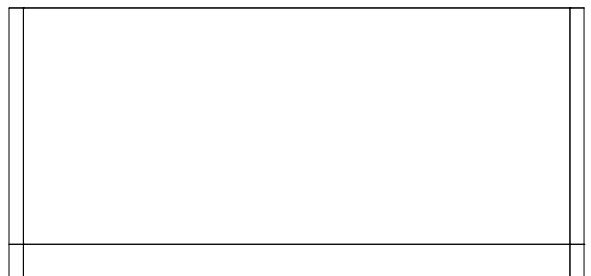
(2) **GD - L BRACKET 66x66x127
-A100140**



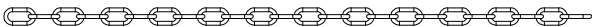
(2) **EJ - L BRACKET 54x67
-A100053**



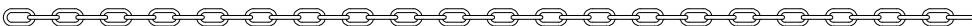
(6) **KC - METAL GROUND STAKE BROWN - A100178**



(1) **HY - TARP 1522x2119 - A100062**



(2) **KN - CHAIN GREEN 31" - A100177**

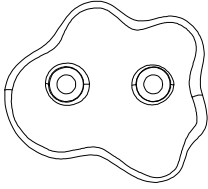


(4) **EZ - CHAIN GREEN 51.25" - A100068**

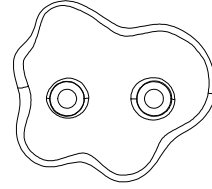
Parts Identification

Accessories

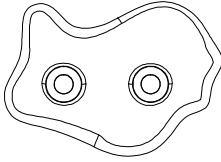
(NOT TO SCALE)



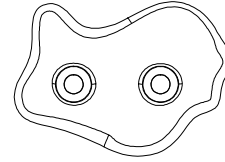
(1) - GREEN HC ROCK #1 - A6P00036



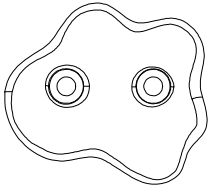
(1) - BLUE HC ROCK #2 - A6P00040



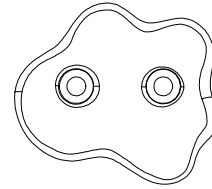
(1) - GREEN HC ROCK #2 - A6P00037



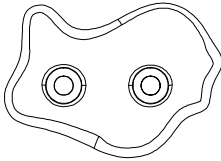
(1) - BLUE HC ROCK #1 - A6P00041



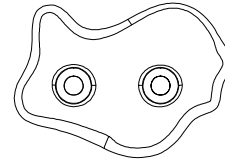
(2) - RED HC ROCK #1 - A6P00038



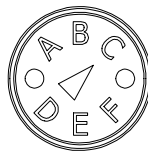
(1) - YELLOW HC ROCK #1 - A6P00042



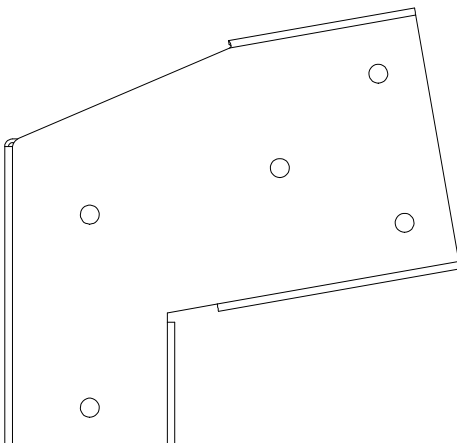
(1) - RED HC ROCK #2 - A6P00039



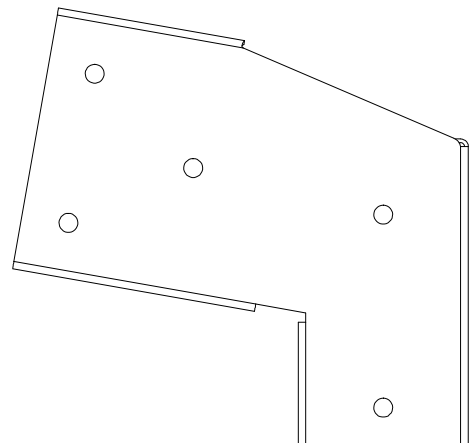
(1) - YELLOW HC ROCK #2 - A6P00043



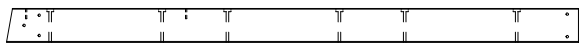
(1) SS - "C" REVISION TAG - A100316



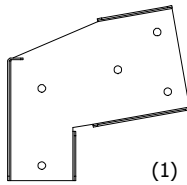
(1) TC - SWING BEAM EXTENSION BRACKET-RIGHT - A100326



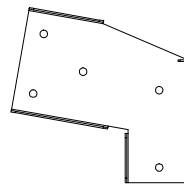
(1) TB - SWING BEAM EXTENSION BRACKET-LEFT - A100325



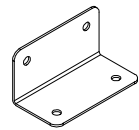
(1) **SB74 - SWING BEAM EXTENDED - W102419**
2"x5 1/4"x89 1/2" (50x134x2274)



(1) **TB - SWING BEAM EXTENSION BRACKET-LEFT - A100325**



(1) **TC - SWING BEAM EXTENSION BRACKET-RIGHT - A100326**



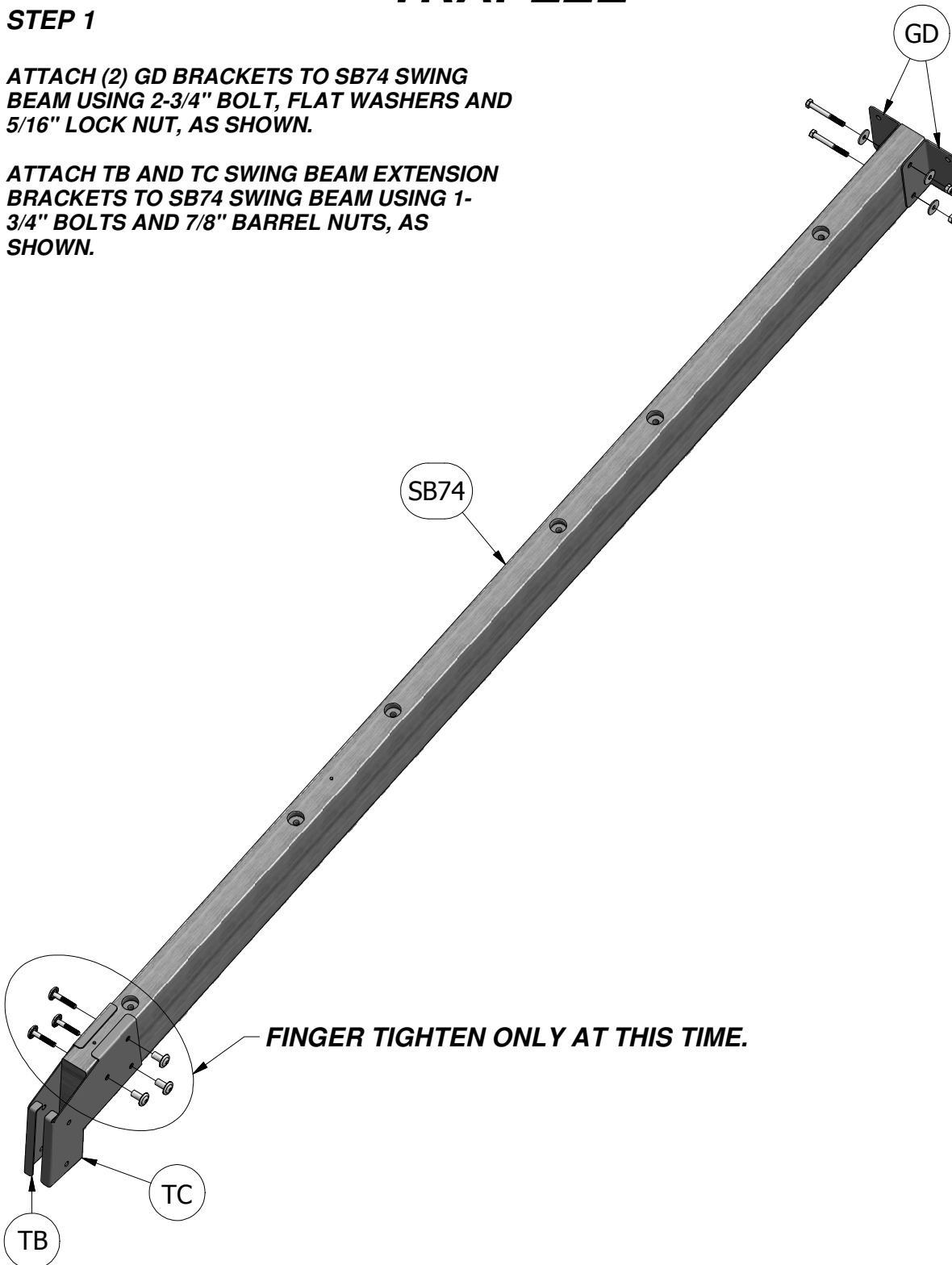
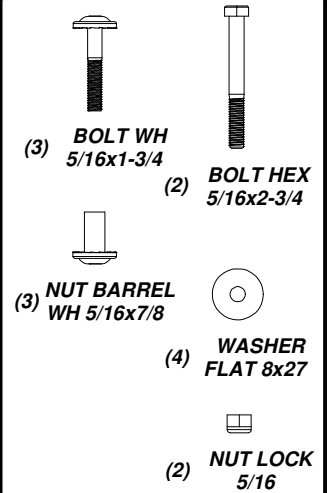
(2) **GD - L BRACKET 66x66x127 - A100140**

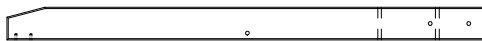
4 FT GREEN EXTENDED SWING BEAM WITH TRAPEZE

STEP 1

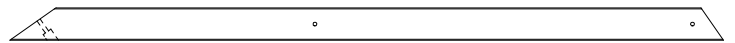
ATTACH (2) GD BRACKETS TO SB74 SWING BEAM USING 2-3/4" BOLT, FLAT WASHERS AND 5/16" LOCK NUT, AS SHOWN.

ATTACH TB AND TC SWING BEAM EXTENSION BRACKETS TO SB74 SWING BEAM USING 1-3/4" BOLTS AND 7/8" BARREL NUTS, AS SHOWN.

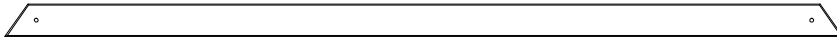




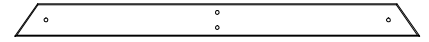
(1) **W71 - SWING BEAM SUPPORT - W102420**
2"x3 3/8"x49 5/8" (50x86x1260)



(2) **E77 - ANGLE BRACE - W100991**
1 3/8"x3 3/8"x74 3/8" (36x86x1890)



(1) **H80 - GROUND BOARD - W100990**
1"x3 3/8"x87 3/8" (24x86x2218)



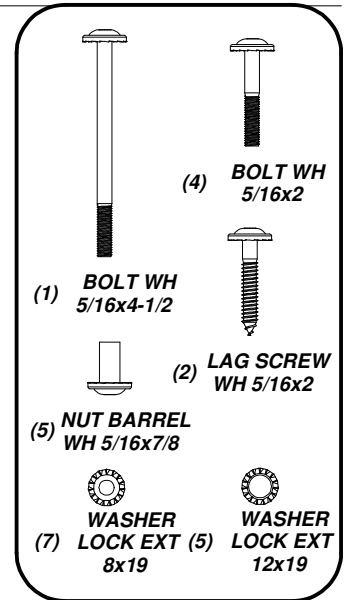
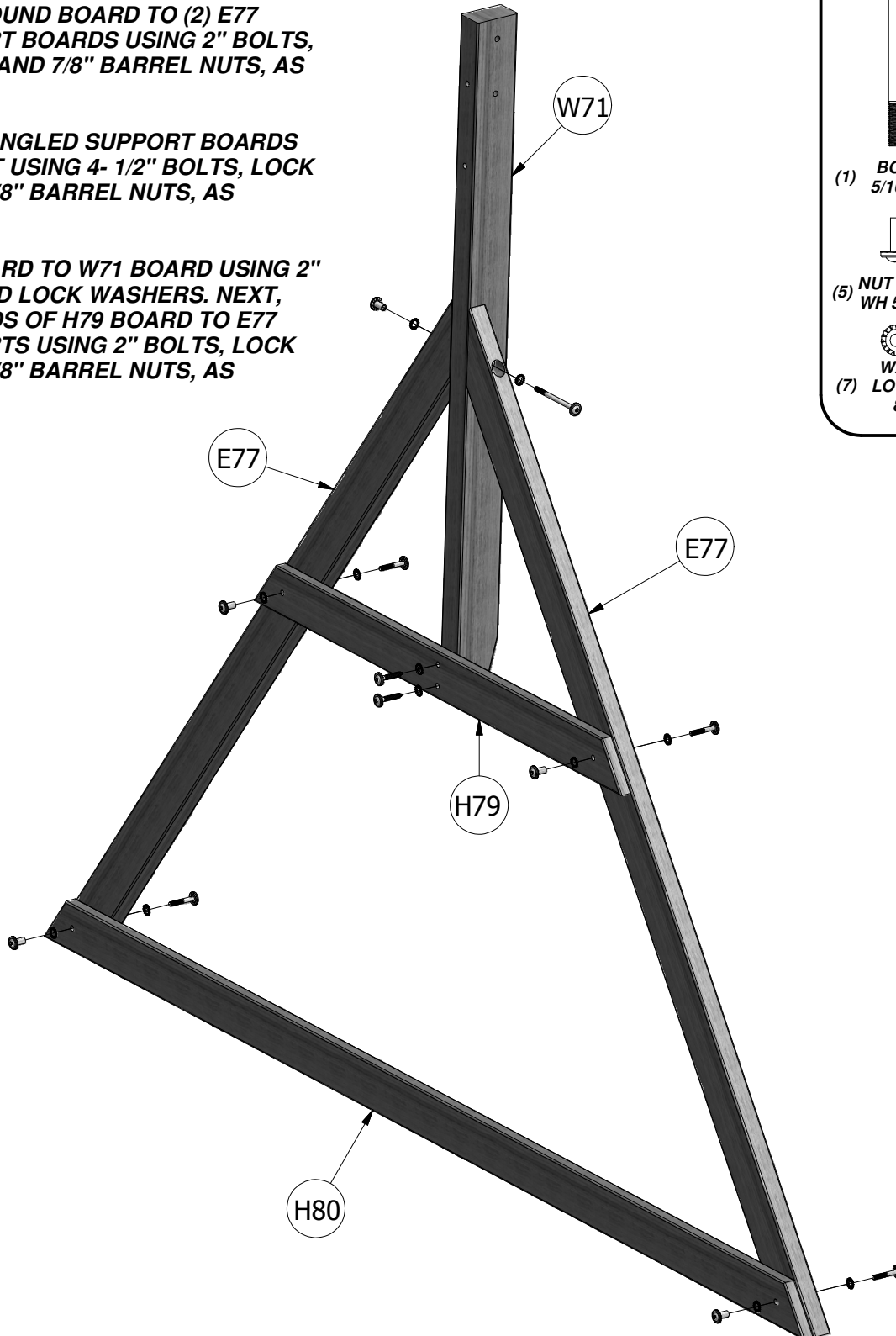
(1) **H79 - END SUPPORT - W100992**
1"x3 1/2"x42" (24x86x1072)

STEP 2

ATTACH H80 GROUND BOARD TO (2) E77 ANGLED SUPPORT BOARDS USING 2" BOLTS, LOCK WASHERS AND 7/8" BARREL NUTS, AS SHOWN.

ATTACH (2) E77 ANGLED SUPPORT BOARDS TO W71 SUPPORT USING 4- 1/2" BOLTS, LOCK WASHERS AND 7/8" BARREL NUTS, AS SHOWN.


ATTACH H79 BOARD TO W71 BOARD USING 2" LAG SCREWS AND LOCK WASHERS. NEXT, SECURE THE ENDS OF H79 BOARD TO E77 ANGLED SUPPORTS USING 2" BOLTS, LOCK WASHERS AND 7/8" BARREL NUTS, AS SHOWN.



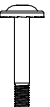
STEP 3

INSERT W71 BOARD INTO TB AND TC BRACKET OPENING AND SECURE USING 1-3/4" BOLTS AND 7/8" BARREL NUTS, AS SHOWN.


INSERT 2-1/2" BOLTS, LOCK WASHERS AND 1-1/2" BARREL NUTS INTO THE EDGE OF W71 BOARD, AS SHOWN.




(2) **BOLT WH**
5/16x1-3/4




(2) **BOLT WH**
5/16x2-1/2




(2) **NUT BARREL**
WH 5/16x7/8



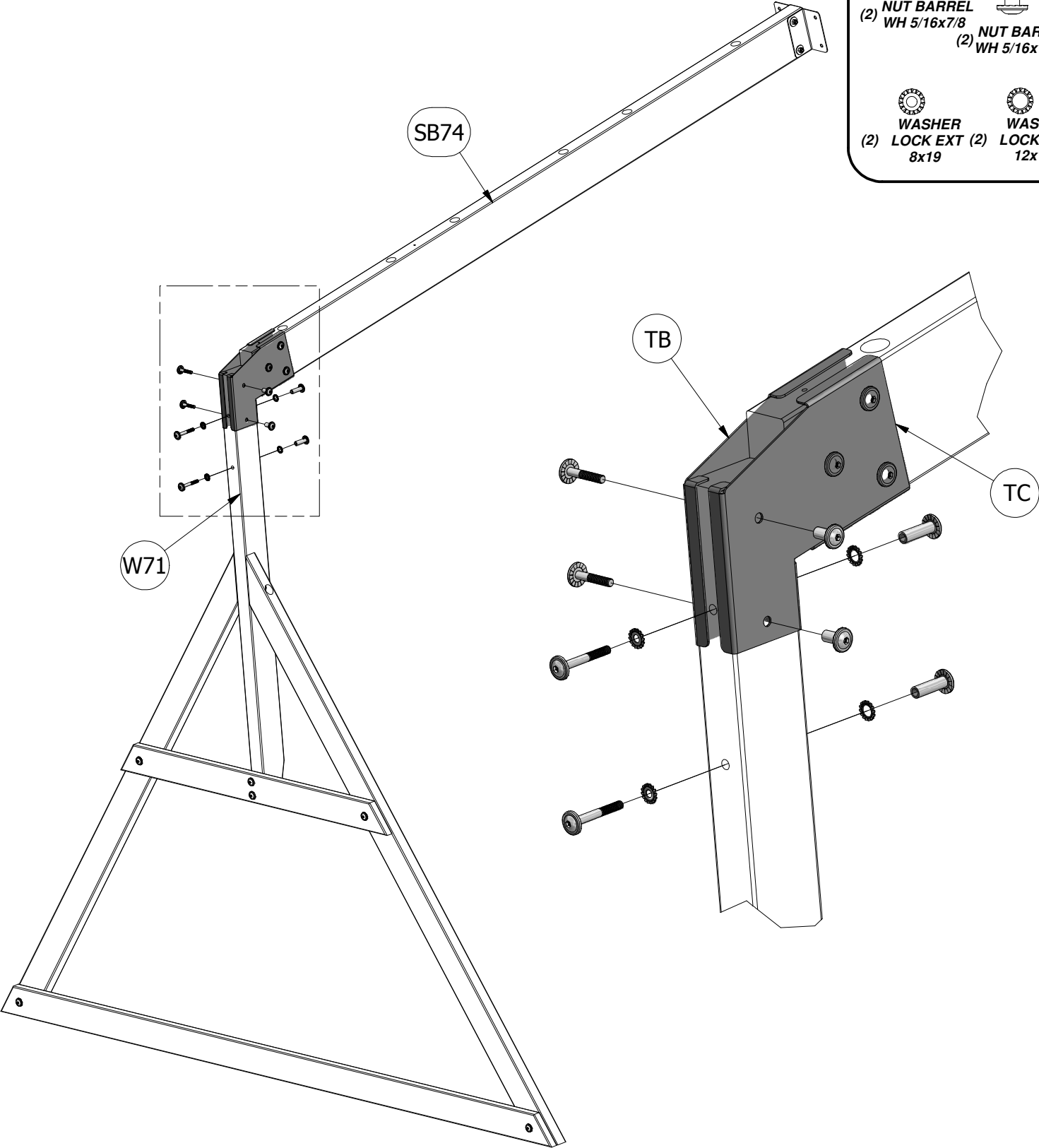
(2) **NUT BARREL**
WH 5/16x1-1/2



(2) **WASHER**
LOCK EXT (2) 8x19

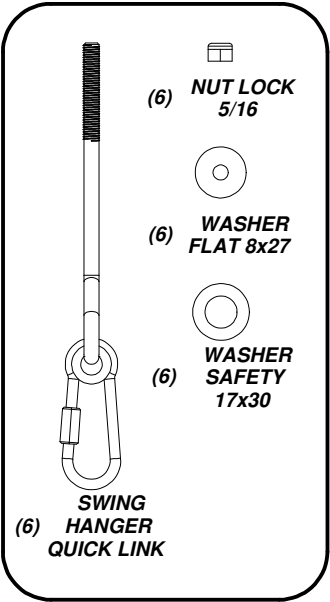
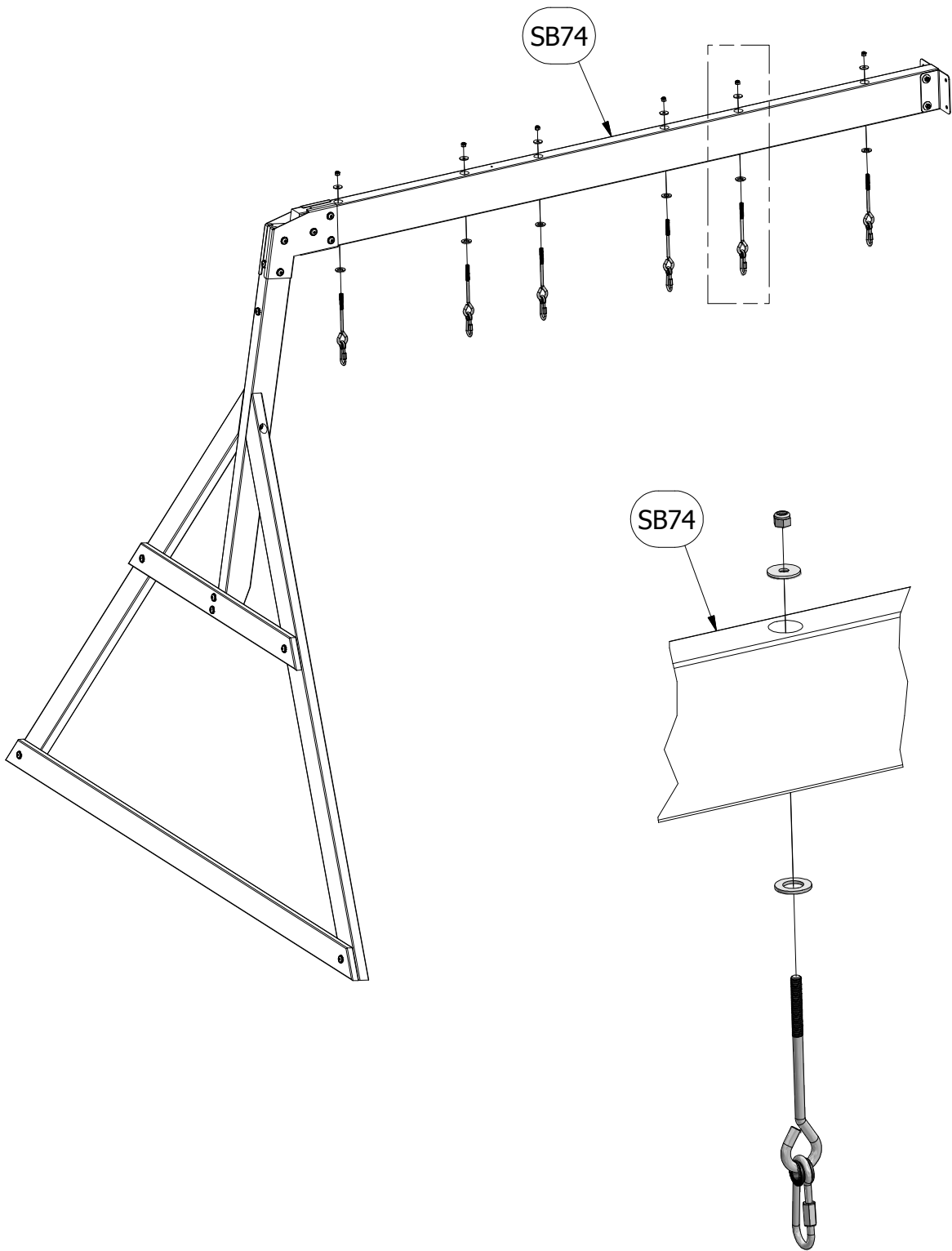


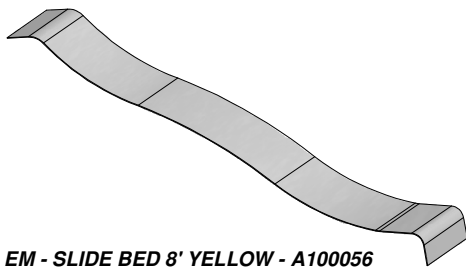
(2) **WASHER**
LOCK EXT (2) 12x19



STEP 4

INSERT (6) SWING HANGER QUICK LINK INTO SB74 SWING BEAM USING SAFETY WASHERS, FLAT WASHERS AND 5/16" LOCK NUTS, AS SHOWN.





(1) EM - SLIDE BED 8' YELLOW - A100056



(1) M77 - SLIDE BRACE - W100544
5/8"x3 3/8"x17 1/4" (16x86x438)

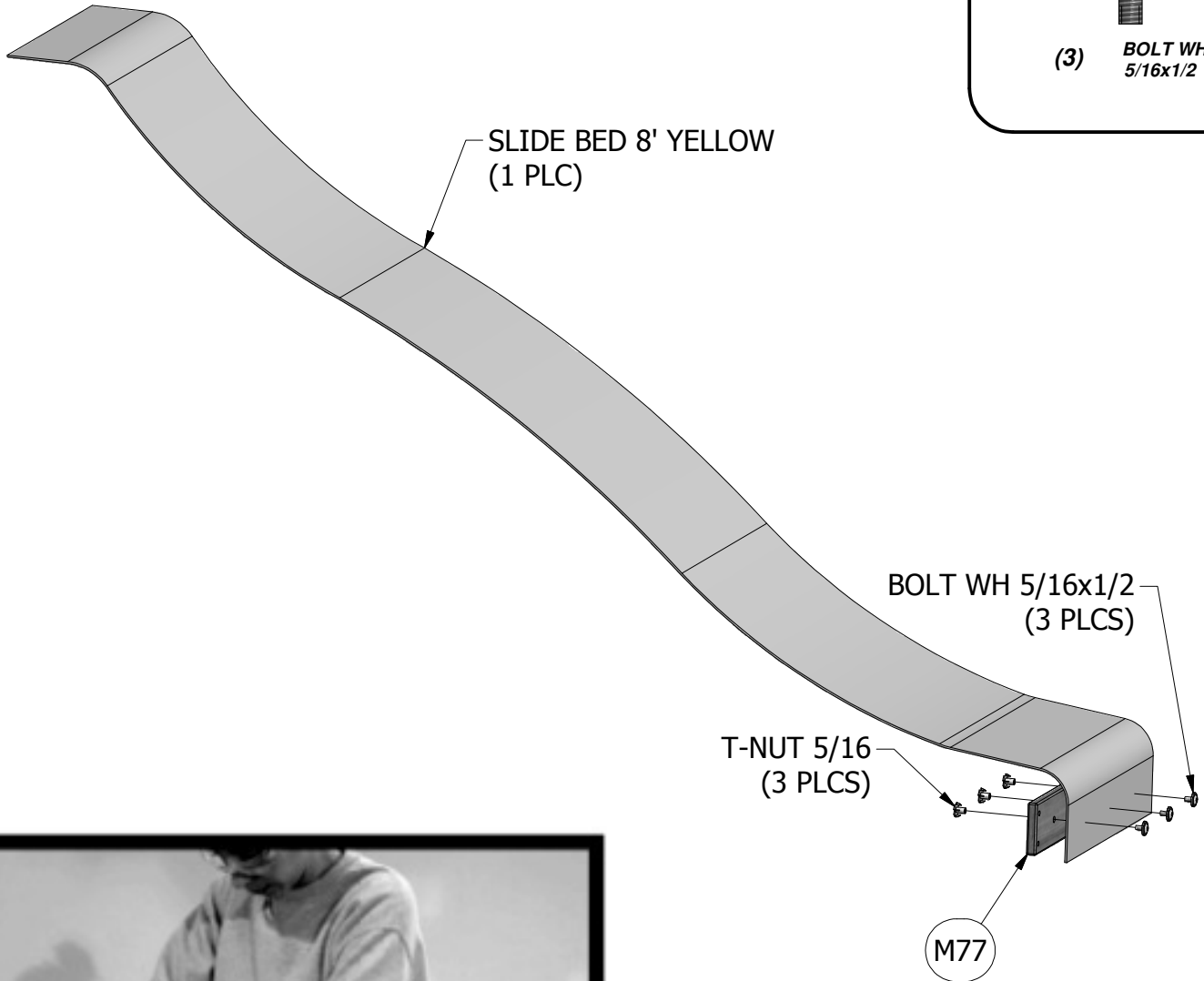
SLIDE ASSEMBLY STEP 1



(3) T-NUT 5/16

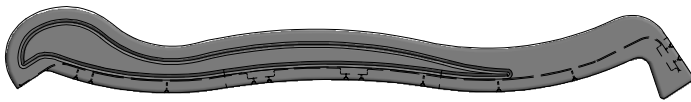


(3) BOLT WH
5/16x1/2



**USE 'M77' SLIDE BRACE AS A
TEMPLATE FOR DRILLING BOTTOM
HOLE PATTERN IN SLIDE BED. BE SURE
TO PLACE SLIDE BRACE UP 1/4" FROM
BOTTOM EDGE OF SLIDE BED BEFORE
MARKING HOLE PATTERN.**

TIP: PREBENDING THE ENDS WILL EASE ASSEMBLY.



(1) EK - SLIDE RAIL 8' GREEN RIGHT - A100054

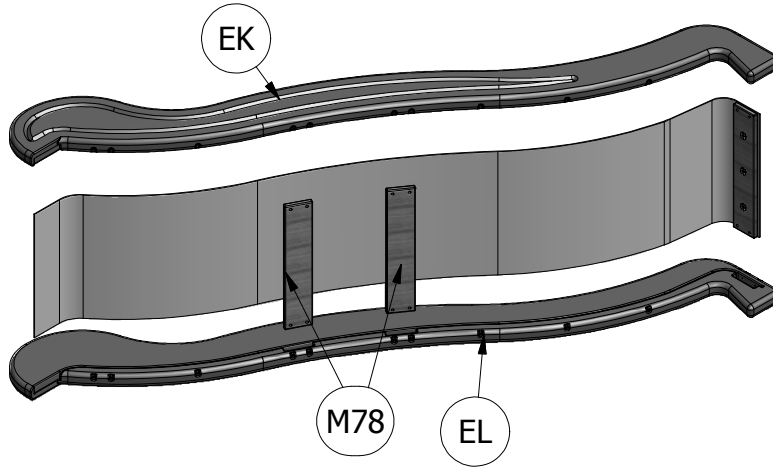


(1) EL - SLIDE RAIL 8' GREEN LEFT - A100055



(2) M78 - CENTER SLIDE BRACE - W100545
5/8"x3 3/8"x17 1/4" (16x86x438)

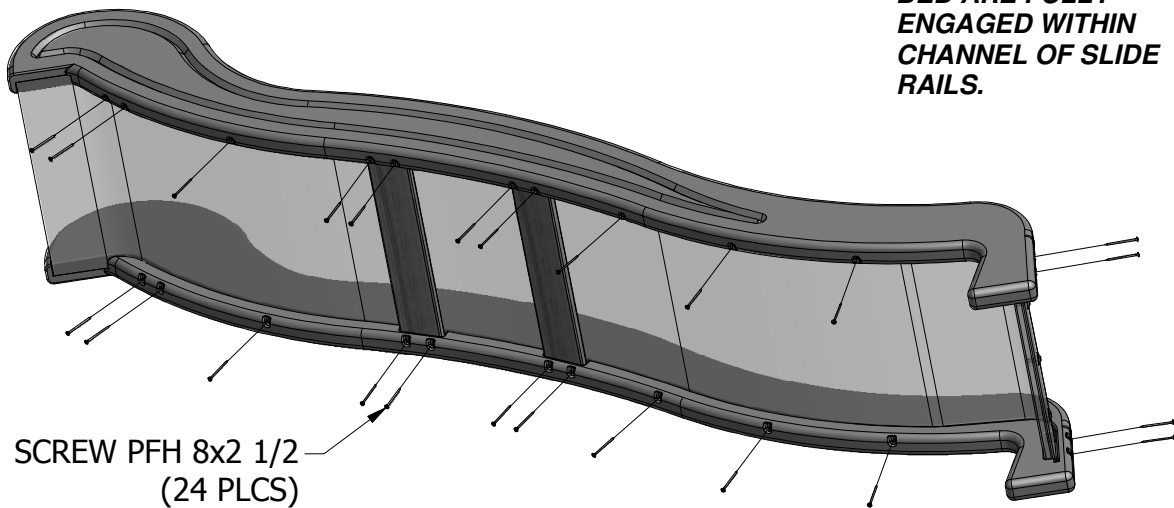
SLIDE ASSEMBLY STEP 2



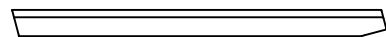
(24) SCREW PFH
8x2 1/2

NOTE:

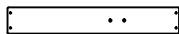
**MAKE CERTAIN
SUPPORTS AND SLIDE
BED ARE FULLY
ENGAGED WITHIN
CHANNEL OF SLIDE
RAILS.**



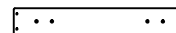
TIP: A HELPER IS REQUIRED FOR THIS STEP.



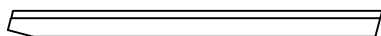
- (1) **E82 - LEFT RAIL - W101127**
1 3/8"x3 3/8"x48 3/4" (36x86x1239)



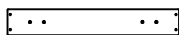
- (8) **M82 - ROCK WALL BOARD - W4L05551**
5/8"x3 3/8"x22 3/8" (16x86x568)



- (3) **M83 - ROCK WALL BOARD - W101132**
5/8"x3 3/8"x22 3/8" (16x86x568)



- (1) **E83 - RIGHT RAIL - W101128**
1 3/8"x3 3/8"x48 3/4" (36x86x1239)



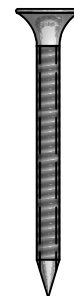
- (3) **M83 - ROCK WALL BOARD - W4L05552**
5/8"x3 3/8"x22 3/8" (16x86x568)

4 FT ROCK WALL ASSEMBLY

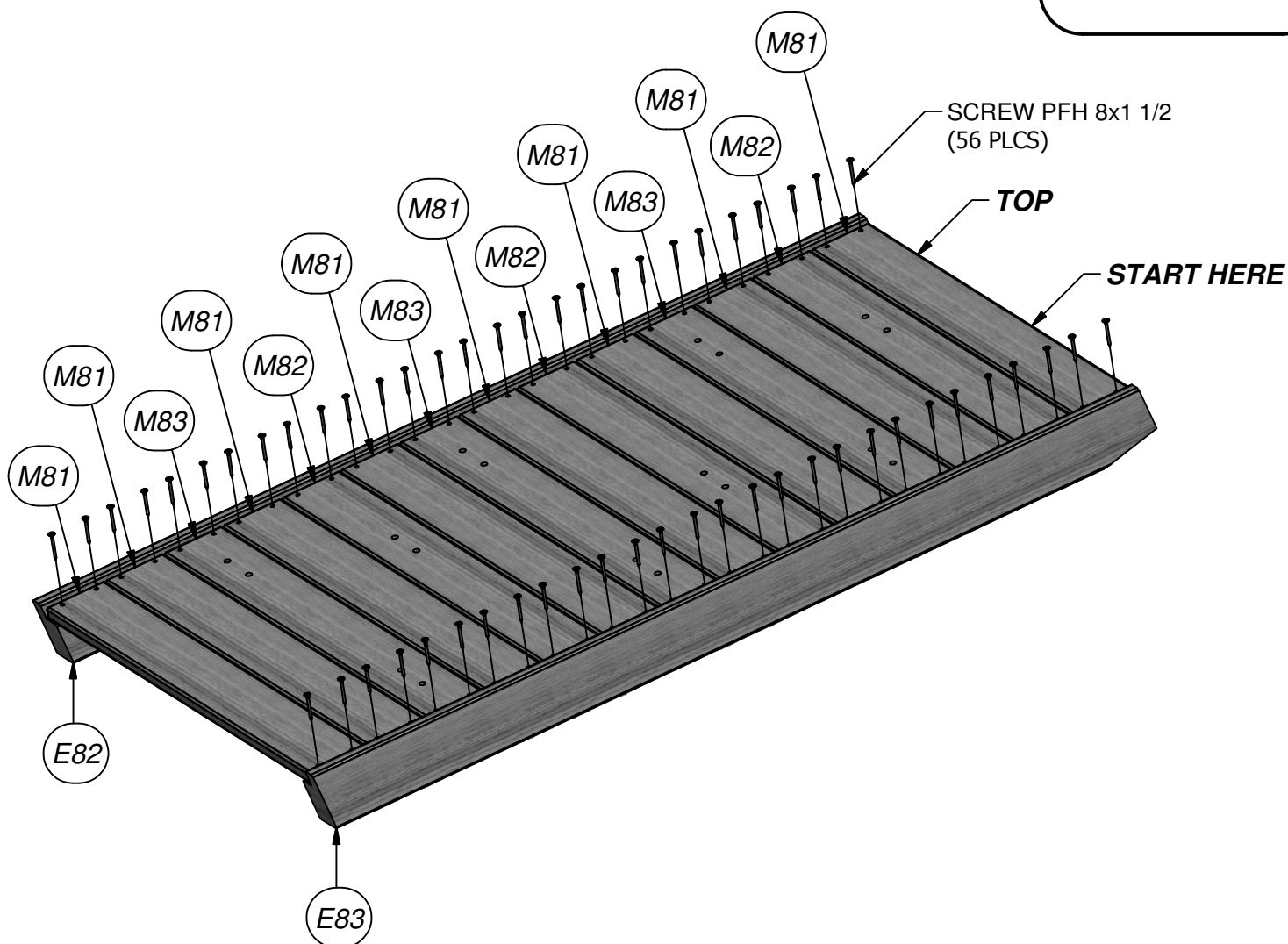
STEP 1

ASSEMBLE SLATS TO RAILS AS SHOWN. NOTE THE ORIENTATION OF THE SLATS AND ARRANGE AS SHOWN.

ATTACH TOP BOARD FIRST. USING SLATS AS A TEMPLATE, PILOT DRILL USING A 1/8" DRILL BIT. FAILURE TO PILOT DRILL MAY RESULT IN BOARD SPLITTING.



(56) SCREW PFH
8x1 1/2



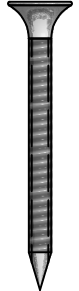
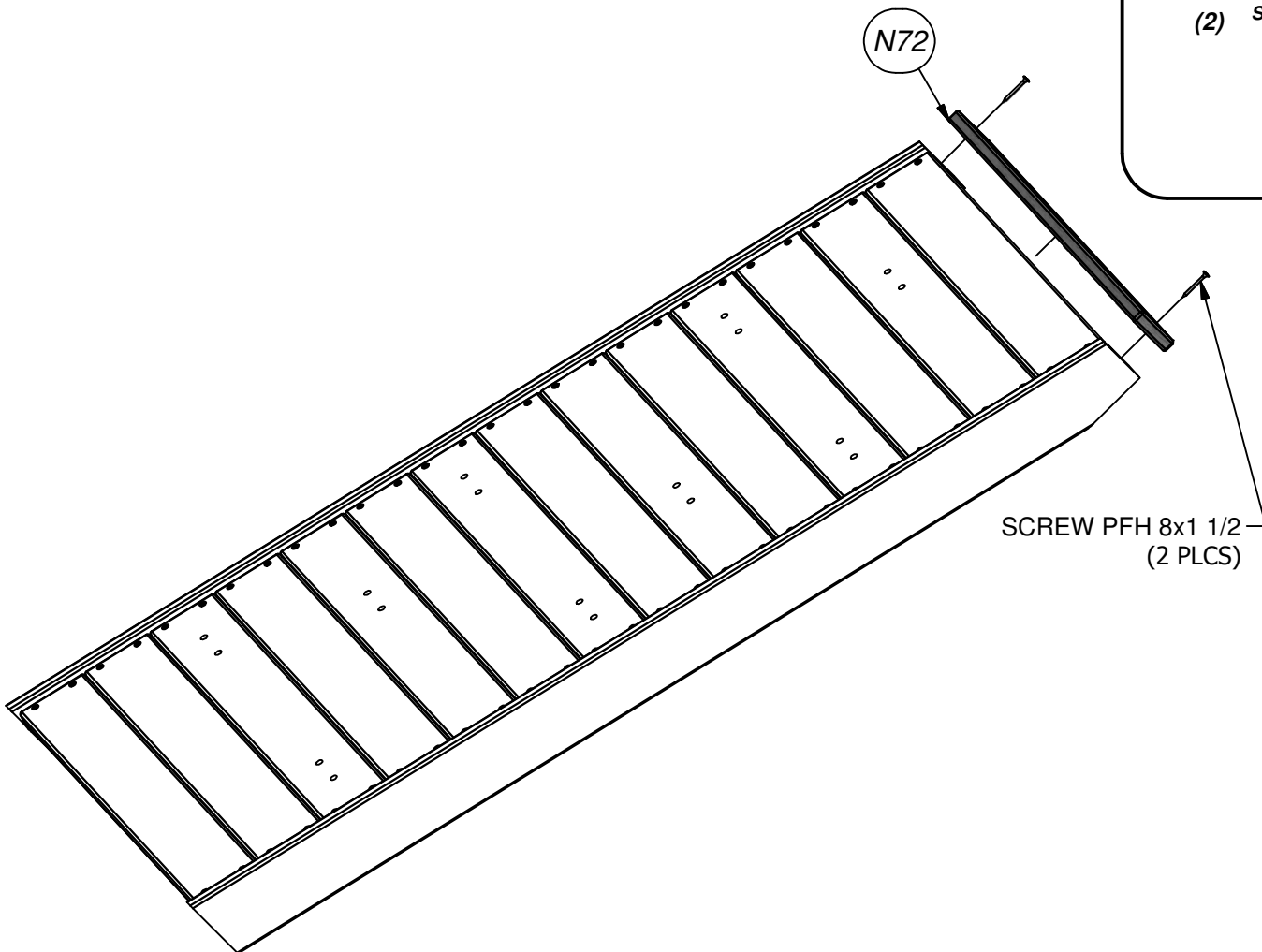


- (1) **N72 - ROCK WALL END BOARD - W101129**
5/8"x2 3/8"x23 5/8" (16x60x600)

4 FT ROCK WALL ASSEMBLY

STEP 2

USING N72 ROCK WALL ENDBOARD AS A TEMPLATE, PILOT DRILL USING 1/8" DRILL BIT AND ATTACH N72 TO TOP OF E82 AND E83 UPRIGHT RAILS USING (2) 1-1/2" WOOD SCREWS, AS SHOWN. FAILURE TO PILOT DRILL MAY RESULT IN BOARD SPLITTING.



- (2) **SCREW PFH**
8x1 1/2



(1) - GREEN HC ROCK #1 - A6P00036



(1) - RED HC ROCK #2 - A6P00039



(1) - YELLOW HC ROCK #1 - A6P00042



(1) - BLUE HC ROCK #1 - A6P00041



(1) - GREEN HC ROCK #2 - A6P00037



(2) - RED HC ROCK #1 - A6P00038



(1) - YELLOW HC ROCK #2 - A6P00043



(1) - BLUE HC ROCK #2 - A6P00040

4 FT ROCK WALL ASSEMBLY

STEP 3

FLIP ROCK WALL ASSEMBLY OVER ON IT'S FRONT SURFACE AND INSTALL (18) 1/4" T-NUTS WITH A HAMMER.

FLIP ROCK WALL ASSEMBLY SO THAT FRONT SURFACE IS SHOWING AND ATTACH CLIMBING ROCKS TO ROCK WALL BOARDS USING (18) 1-1/4" BOLTS AND LOCK WASHERS, AS SHOWN.



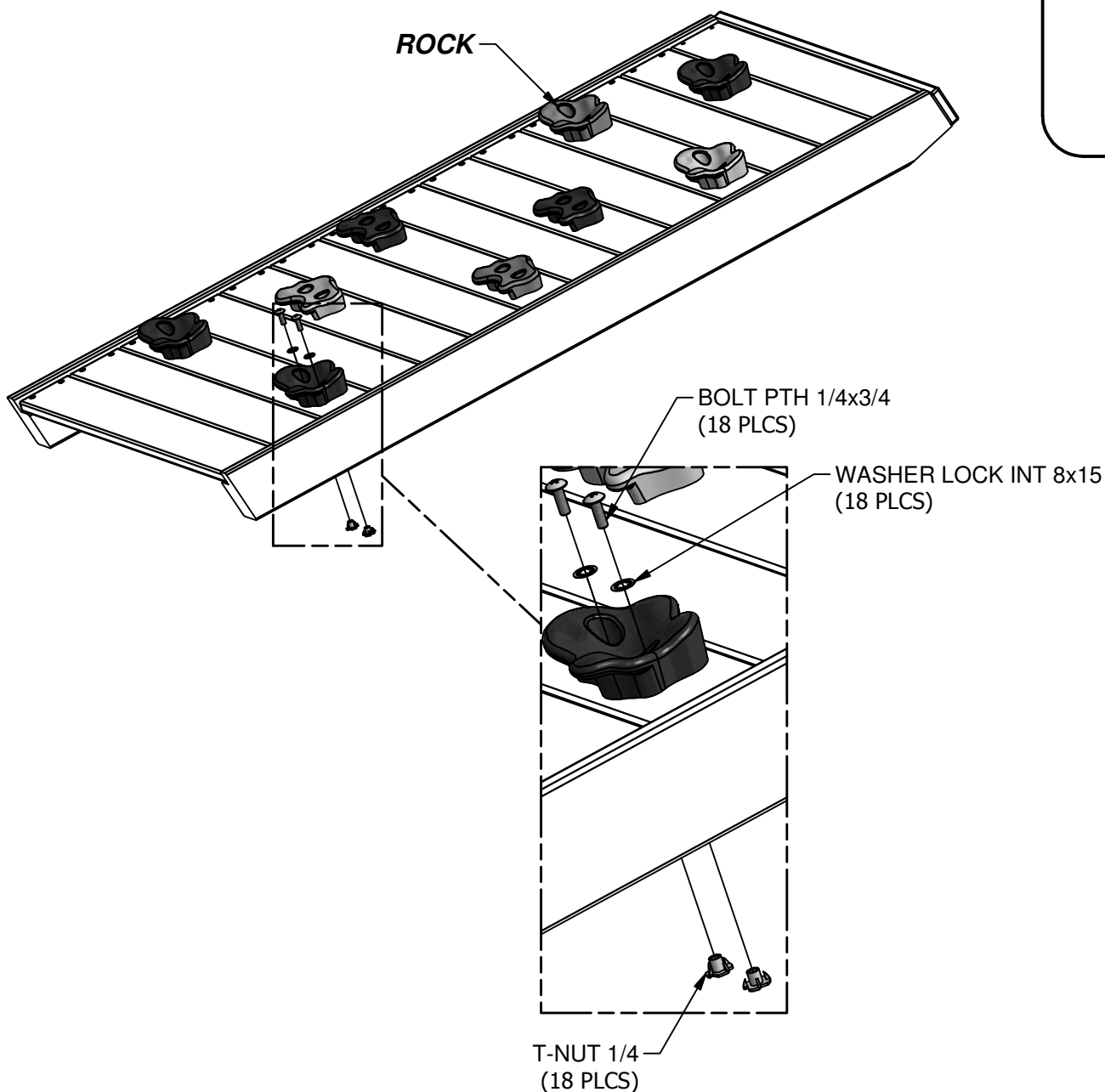
(18) BOLT PTH
1/4x3/4



(18) WASHER
LOCK INT
8x15



(18) T-NUT 1/4



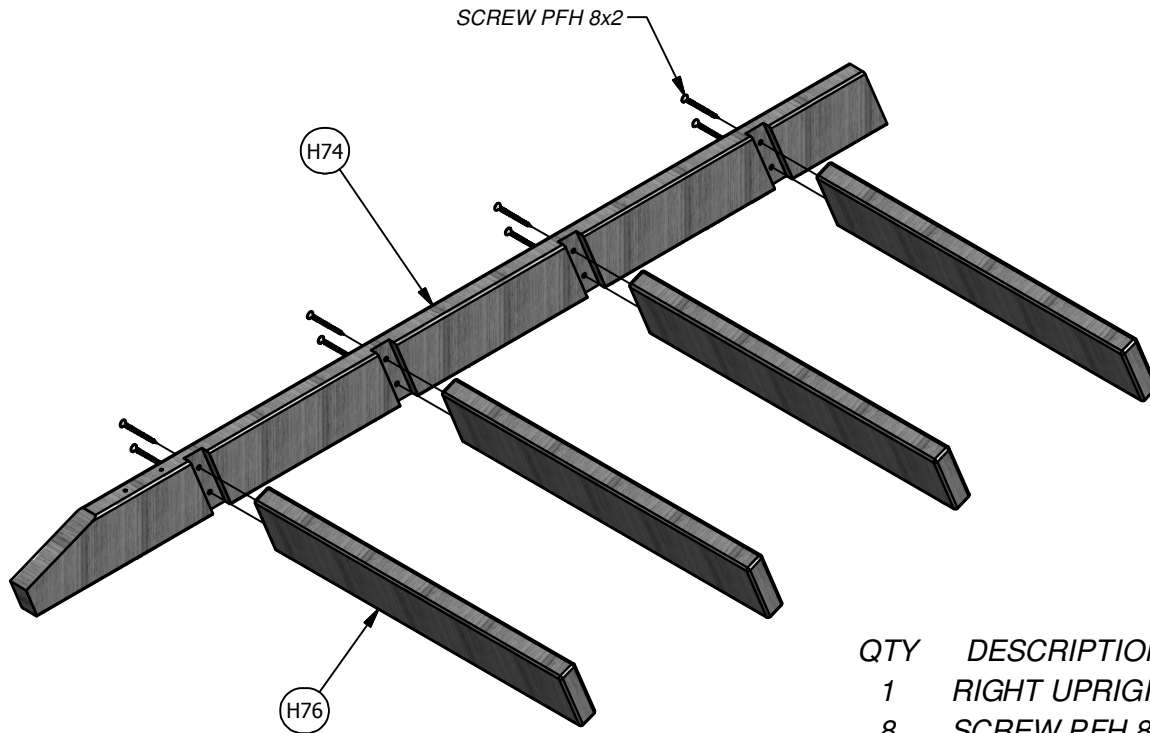
4 Ft Ladder

Phase 1 & 2

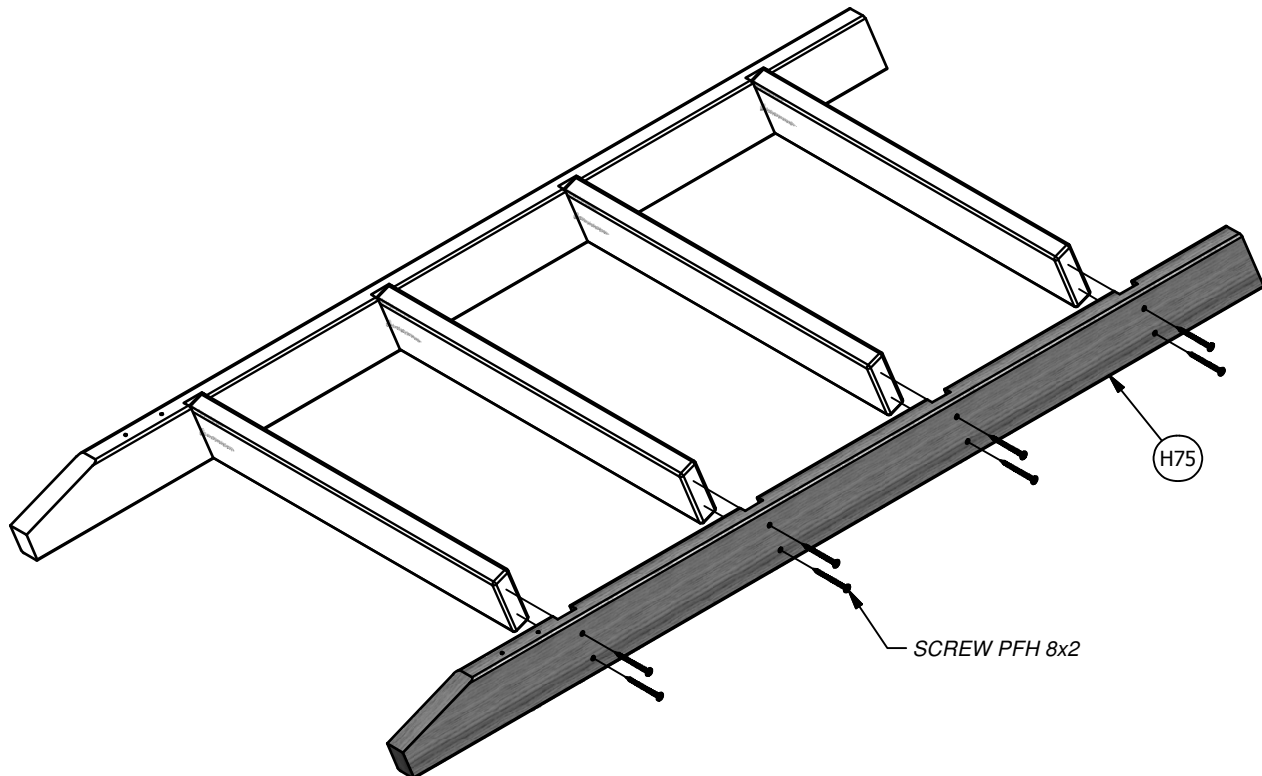
Phase Notes

- Assemble with hardware as shown.
- Center rungs in rail grooves.

QTY	DESCRIPTION	LABEL
1	LEFT UPRIGHT	H74
4	LADDER RUNG	H76
8	SCREW PFH 8x2	



QTY	DESCRIPTION	LABEL
1	RIGHT UPRIGHT	H75
8	SCREW PFH 8x2	

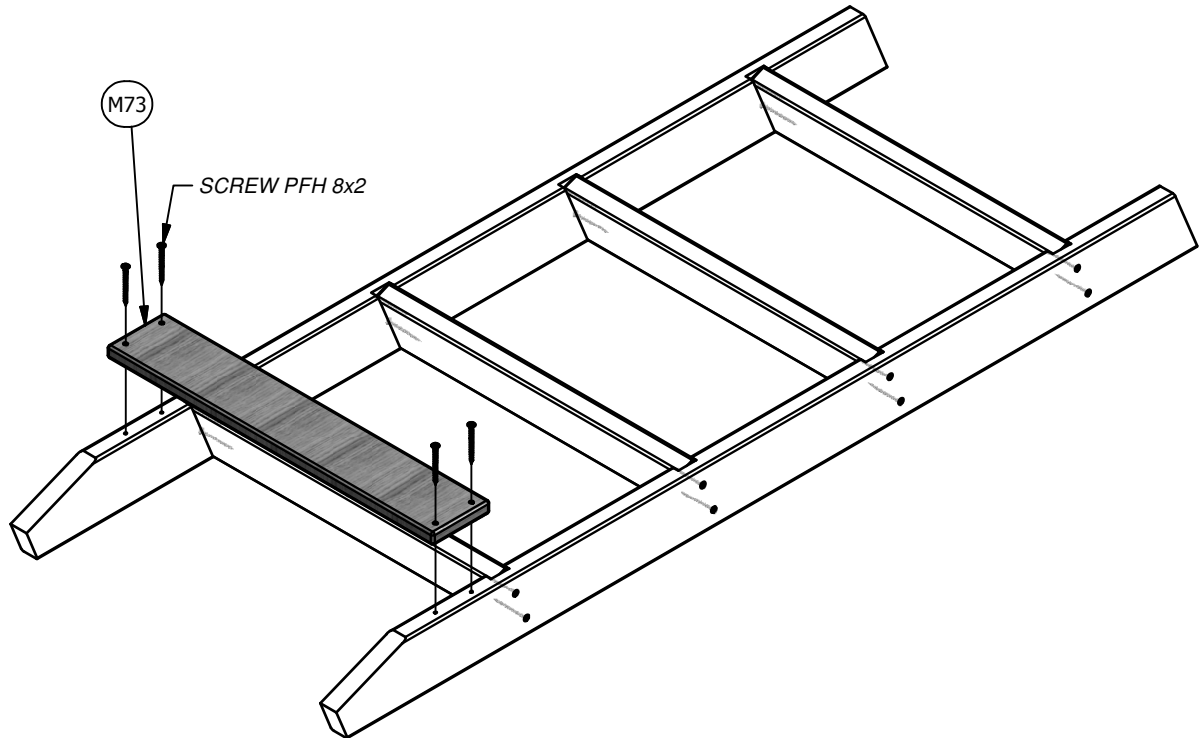


4 Ft Ladder

Phase 3

Phase Notes

- Assemble with hardware as shown.



QTY	DESCRIPTION	LABEL
1	REAR SUPPORT	M73
4	SCREW PFH 8x2	

- (1) **E1 - UPRIGHT - W101261**
1 3/8"x3 3/8"x81 3/4" (36x86x2076)
- (2) **E2 - UPRIGHT - W101260**
1 3/8"x3 3/8"x81 3/4" (36x86x2076)
- (1) **E3 - UPRIGHT - W101256**
1 3/8"x3 3/8"x81 3/4" (36x86x2076)

- (1) **K4 - FLOOR RAIL - W103700**
5/8"x5 1/4"x60 1/8" (16x134x1528)
- (1) **L2 - GROUND BOARD - W100684**
5/8"x4 3/8"x60 1/8" (16x112x1528)
- (1) **L7 - ARCHED SCULPTURED RAIL - W100695**
5/8"x4 3/8"x60 1/8" (16x112x1528)

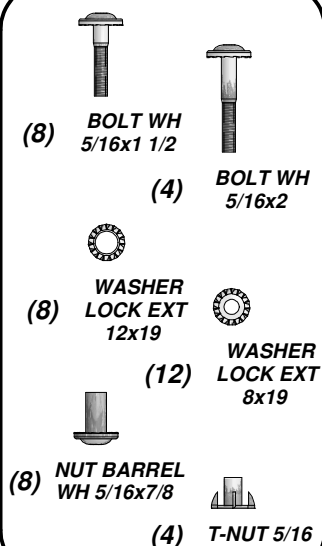
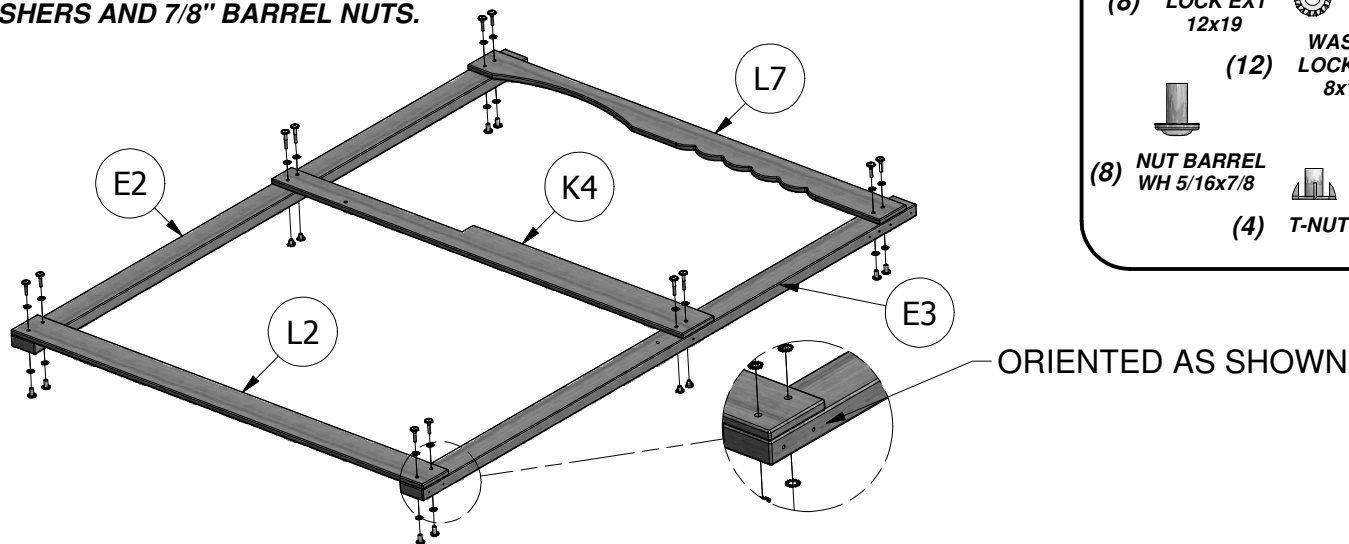
- (1) **M13 - FLOOR RAIL - W102867**
5/8"x3 3/8"x60 1/8" (16x86x1528)
- (1) **M7 - WALL BOARD - W100708**
5/8"x3 3/8"x35 1/4" (16x86x895)
- (1) **M8 - WALL RAIL - W100700**
5/8"x3 3/8"x35 7/8" (16x86x910)
- (1) **L6 - ARCHED RAIL - W100694**
5/8"x4 3/8"x60 1/8" (16x112x1528)

STEP 1

LAY TWO E2 AND E3 FORT UPRIGHTS FLAT ON GROUND. ATTACH L2 GROUND BOARD TO E2 AND E3 FORT UPRIGHTS USING (4) 1-1/2" BOLTS, LOCK WASHERS AND 7/8" BARREL NUTS.

ATTACH K4 FLOOR RAIL TO E2 AND E3 FORT UPRIGHTS USING (4) 2" BOLTS, LOCK WASHERS AND 5/16" T-NUTS.

ATTACH L7 SCULPTURED RAIL TO E2 AND E3 FORT UPRIGHTS USING (4) 1-1/2" BOLTS, LOCK WASHERS AND 7/8" BARREL NUTS.



STEP 2

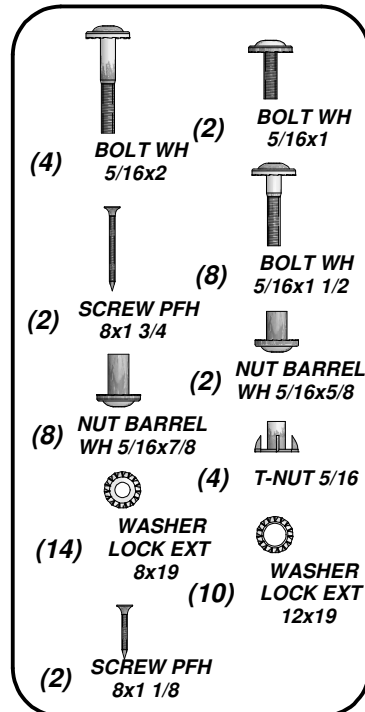
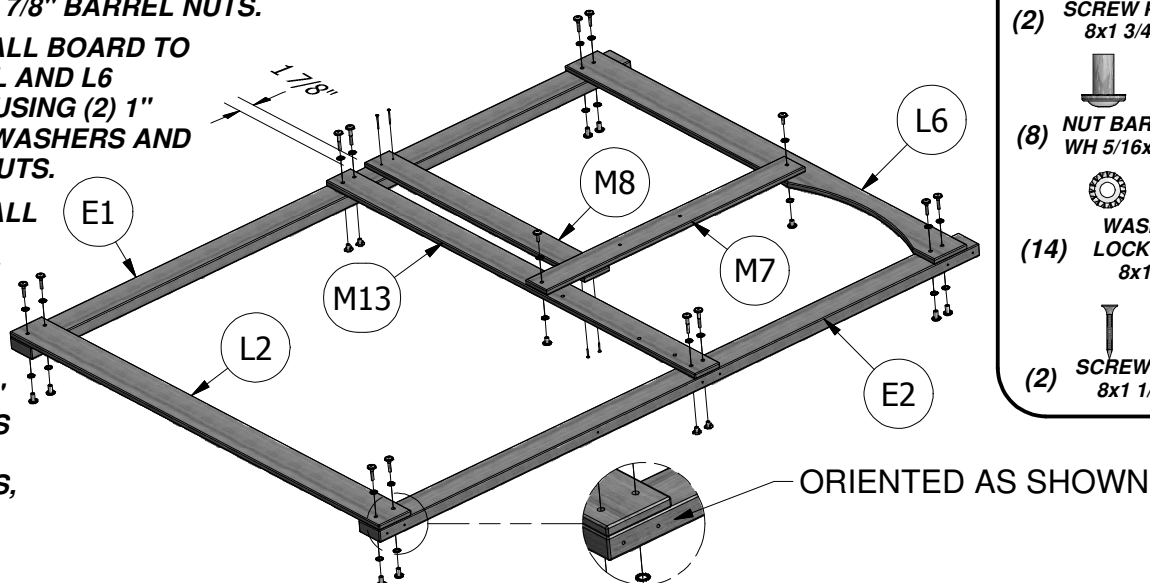
LAY TWO E1 AND E2 FORT UPRIGHTS FLAT ON GROUND. ATTACH L2 GROUND BOARD TO E1 AND E2 FORT UPRIGHTS USING (4) 1-1/2" BOLTS, LOCK WASHERS AND 7/8" BARREL NUTS.

ATTACH M13 FLOOR RAIL TO E1 AND E2 FORT UPRIGHTS USING (4) 2" BOLTS, LOCK WASHERS AND 5/16" T-NUTS.

ATTACH L6 ARCHED RAIL TO E1 AND E2 FORT UPRIGHTS USING (4) 1-1/2" BOLTS, LOCK WASHERS AND 7/8" BARREL NUTS.

ATTACH M7 WALL BOARD TO M2 FLOOR RAIL AND L6 ARCHED RAIL USING (2) 1" BOLTS, LOCK WASHERS AND 5/8" BARREL NUTS.

ATTACH M8 WALL RAIL TO THE OUTSIDE OF E1 AND TO THE INSIDE OF M7 WALL BOARD USING (2) 1-3/4" WOOD SCREWS AND (2) 1-1/8" WOOD SCREWS, AS SHOWN.



- (1) **K1 - ROOF SWING BEAM SUPPORT - W100682**
5/8"x5 1/4"x51 5/8" (16x134x1310)

- (1) **K5 - FLOOR RAIL - W103705**
5/8"x5 1/4"x30" (16x134x762)

- (1) **M9 - ANGLE BRACE - W100696**
5/8"x3 3/8"x35 5/8" (16x86x904)

- (2) **M5 - FACE BOARD - W101599**
5/8"x3 3/8"x43 1/8" (16x86x1094)

- (1) **M10 - SAFETY BOARD - W100701**
5/8"x3 3/8"x33 7/8" (16x86x860)

- (1) **L3 - GROUND BOARD - W101602**
5/8"x4 3/8"x46 7/8" (16x112x1191)

STEP 3

USING A HAMMER, INSTALL (4) 5/16" T-NUTS INTO THE HOLES PROVIDED ON THE INSIDE OF K1 ROOF SWING BEAM SUPPORT AND (2) 5/16" T-NUTS INTO THE HOLES PROVIDED ON THE OUTSIDE SURFACE OF K1 SUPPORT, AS SHOWN.

ATTACH (2) M5 FACE BOARDS TO THE EDGES OF BOTH E2 FORT UPRIGHTS USING (6) 1-1/2" WOOD SCREWS, AS SHOWN.

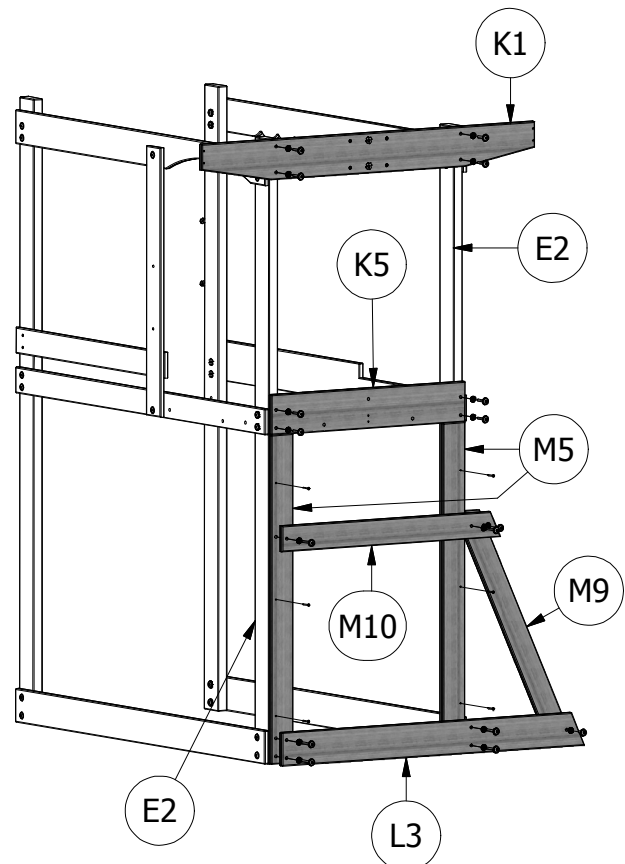
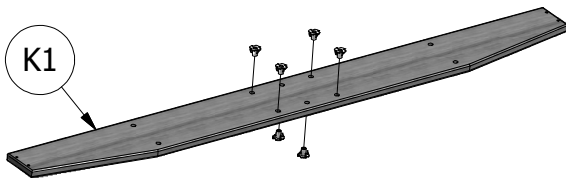
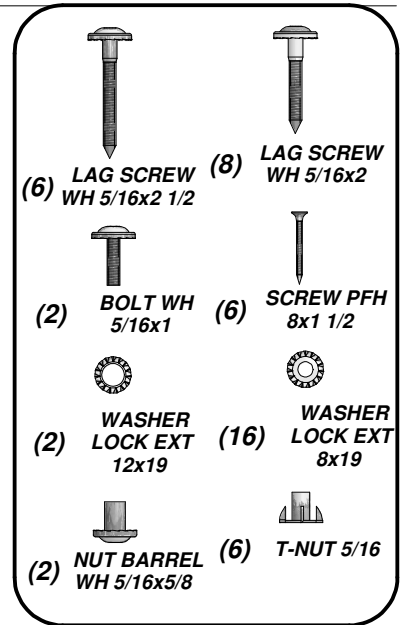
ATTACH L3 GROUND BOARD TO THE EDGES OF BOTH E2 FORT UPRIGHTS AND THROUGH HOLES PROVIDED IN M5 BOARDS USING (4) 2-1/2" LAG SCREWS AND LOCK WASHERS, AS SHOWN.

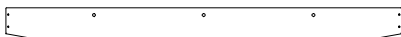
ATTACH M10 SAFETY BOARD TO THE EDGES OF BOTH E2 FORT UPRIGHTS AND THROUGH HOLES PROVIDED IN M5 BOARDS USING (2) 2-1/2" LAG SCREWS AND LOCK WASHERS, AS SHOWN.

ATTACH M9 ANGLE BRACE TO L3 AND M10 BOARDS USING (2) 1" BOLTS, LOCK WASHERS AND 5/8" BARREL NUTS, AS SHOWN.

ATTACH K5 FLOOR RAILS TO THE EDGES OF BOTH E2 FORT UPRIGHTS USING (4) 2" LAG SCREWS AND LOCK WASHERS, AS SHOWN.

ATTACH K1 SUPPORT TO THE EDGES OF BOTH E2 FORT UPRIGHTS AND FLUSH TO TOP EDGES OF E2 UPRIGHTS USING (4) 2" LAG SCREWS AND LOCK WASHERS, AS SHOWN.





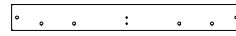
(1) **K2 - ROOF SUPPORT - W100683**
5/8"x5 1/4"x51 5/8" (16x134x1310)



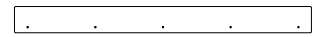
(1) **M12 - ROCK WALL ARCH BOARD - W102862**
5/8"x3 3/8"x30" (16x86x762)



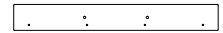
(1) **L5 - GROUND BOARD - W100686**
5/8"x4 3/8"x30" (16x112x762)



(1) **M14 - FLOOR SUPPORT BOARD - W102864**
5/8"x3 3/8"x30" (16x86x762)



(2) **M6 - LOWER FACE BOARD - W101598**
5/8"x3 3/8"x38 5/8" (16x86x982)



(2) **M11 - UPPER FACE BOARD - W102866**
5/8"x3 3/8"x26 5/8" (16x86x676)

STEP 4

ATTACH L5 GROUND BOARD TO THE EDGES OF BOTH E1 AND E3 FORT UPRIGHTS USING (4) 2" LAG SCREWS AND LOCK WASHERS, AS SHOWN.

ATTACH (2) M6 LOWER FACE BOARDS TO THE EDGES OF BOTH E1 AND E3 FORT UPRIGHTS USING (10) 1-1/2" WOOD SCREWS, AS SHOWN.

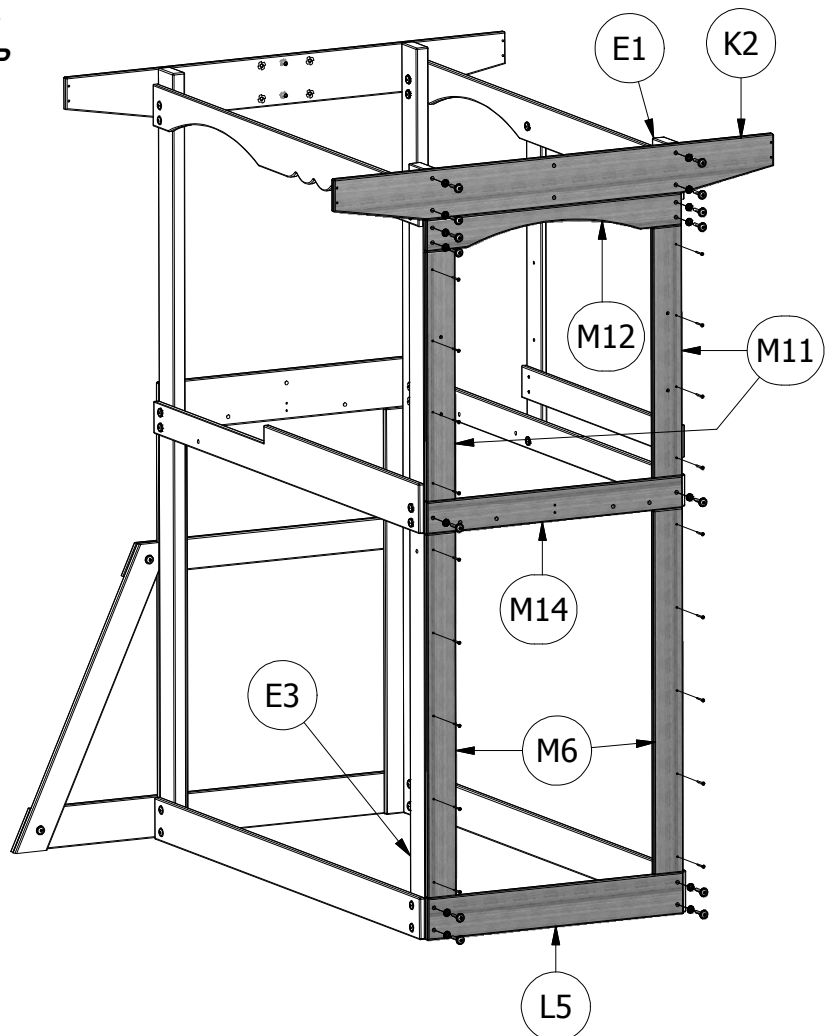
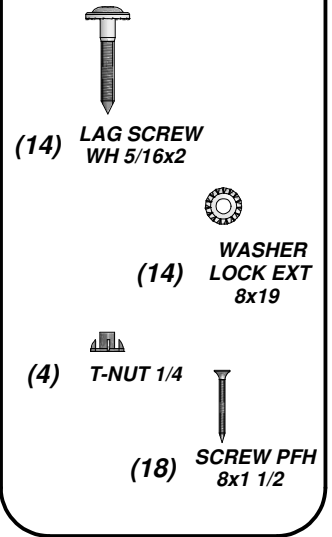
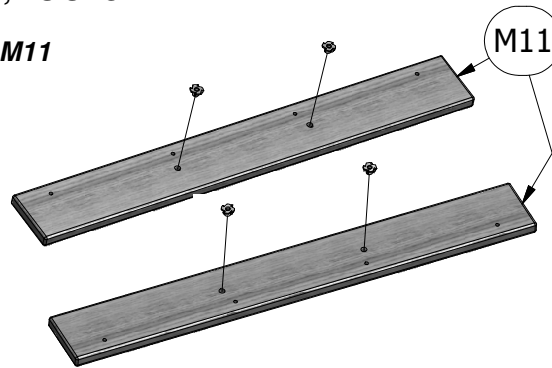
ATTACH M14 SUPPORT BOARD TO THE EDGES OF BOTH E1 AND E3 FORT UPRIGHTS USING (2) 2" LAG SCREWS AND LOCK WASHERS, AS SHOWN.

USING A HAMMER, INSERT (4) 1/4" T-NUTS INTO M11 UPPER FACE BOARDS, AS SHOWN.

ATTACH (2) M11 UPPER FACE BOARDS TO THE EDGES OF BOTH E1 AND E3 FORT UPRIGHTS USING (8) 1-1/2" WOOD SCREWS, AS SHOWN.

ATTACH M12 ARCHED BOARD TO THE EDGES OF BOTH E1 AND E3 FORT UPRIGHTS USING (4) 2" LAG SCREWS AND LOCK WASHERS, AS SHOWN.

ATTACH K2 SUPPORT TO THE EDGES OF BOTH E1 AND E3 FORT UPRIGHTS AND FLUSH TO TOP EDGES OF E2 UPRIGHTS USING (4) 2" LAG SCREWS AND LOCK WASHERS, AS SHOWN.



(2) **M3 - TARP SUPPORT - W100692**
5/8"x3 3/8"x60 1/8" (16x86x1528)

(2) **SP1 - FLOOR SUPPORT CLEAT - W100711**
1"x1"x53 3/8" (24x24x1356)

(1) **J3 - FLOOR JOIST - W100984**
1"x2 3/8"x60 1/8" (24x60x1528)

(6) **F71 - STANDARD ANGLE BRACE - W100689**
1 3/8"x2 3/8"x13" (36x60x330)

(4) **J2 - END FLOOR CLEAT - W100710**
1"x2 3/8"x3 3/8" (24x60x86)

STEP 5

ATTACH (2) M3 TARP SUPPORT TO K1 AND K2 SUPPORTS USING (8) 2" WOOD SCREWS, AS SHOWN.

ATTACH J3 FLOOR JOIST TO K5 FLOOR RAIL AND M14 FLOOR SUPPORT USING (4) 1-1/2" WOOD SCREWS, AS SHOWN.

ATTACH (6) F71 STANDARD ANGLE BRACES TO THE INSIDE FACES OF K4, K5, M13 AND M14 BOARDS USING (6) 1-1/2" BOLTS, LOCK WASHERS AND 7/8" BARREL NUTS, AS SHOWN.

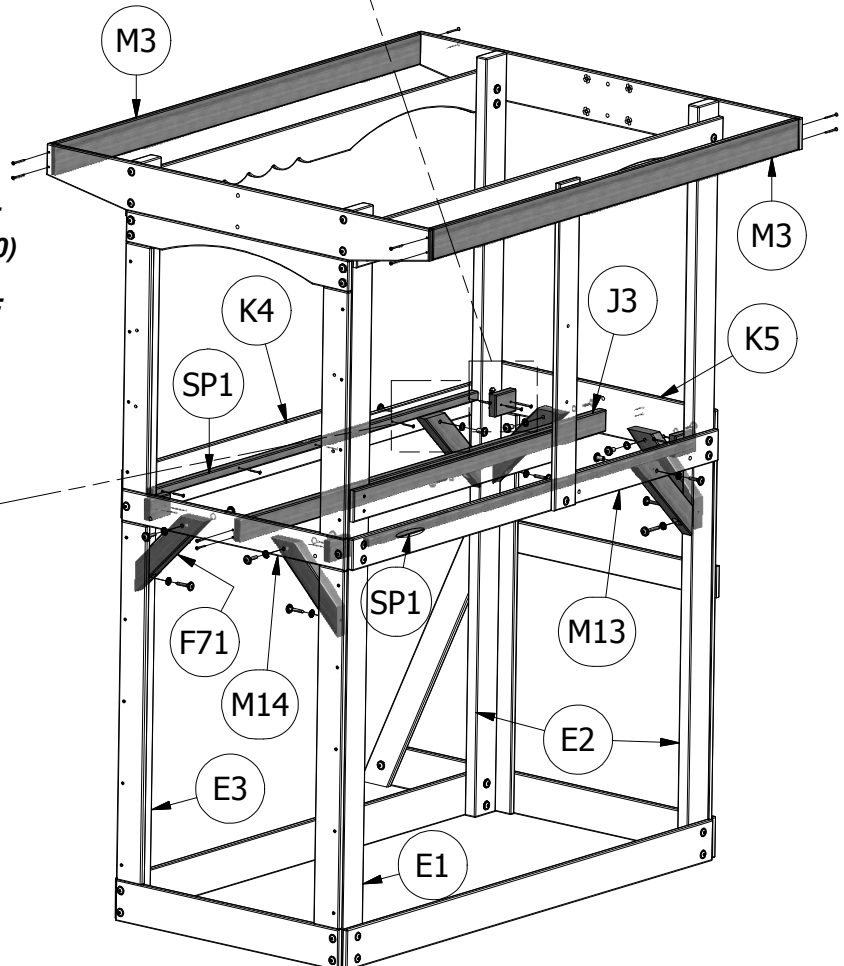
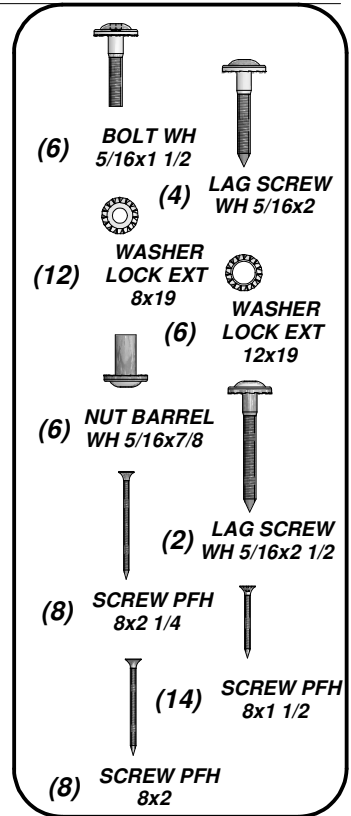
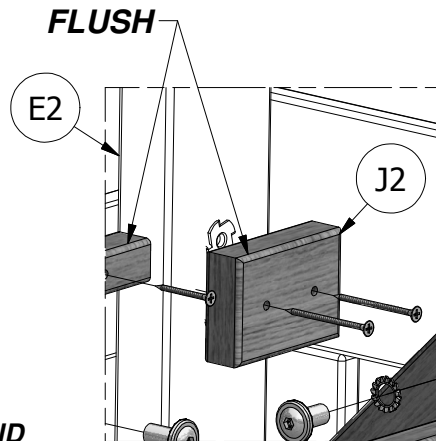
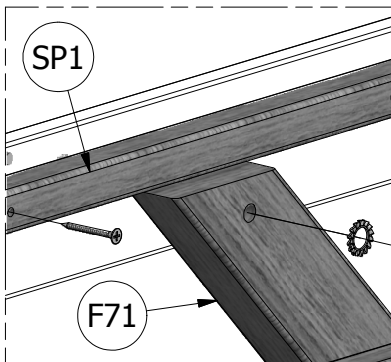
ATTACH (2) F71 STANDARD ANGLE BRACES CONNECTED TO K5 BOARD TO THE FACE OF E2 UPRIGHTS USING (2) 2" LAG SCREWS AND LOCK WASHERS, AS SHOWN.

ATTACH (2) F71 STANDARD ANGLE BRACES CONNECTED TO M14 BOARD TO THE FACE OF E1 AND E3 UPRIGHTS USING (2) 2" LAG SCREWS AND LOCK WASHERS, AS SHOWN.

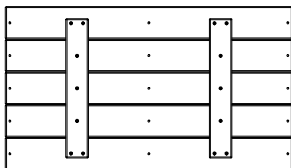
ATTACH F71 STANDARD ANGLE BRACE CONNECTED TO M13 BOARD TO THE EDGE OF E2 UPRIGHT USING 2-1/2" LAG SCREW AND LOCK WASHER, AS SHOWN.

ATTACH F71 STANDARD ANGLE BRACE CONNECTED TO K4 BOARD TO THE EDGE OF E2 UPRIGHT USING 2-1/2" LAG SCREW AND LOCK WASHER, AS SHOWN.

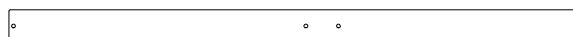
ATTACH SP1 FLOOR SUPPORT CLEAT TO THE INSIDE FACES OF BOTH K4 AND M13 FLOOR RAILS USING (10) 1-1/2" WOOD SCREWS. FOR MOUNTING LOCATION, THE SP1 CLEAT SHOULD REST ON THE TOP EDGE OF THE F71 ANGLE BRACES, AS SHOWN BELOW.



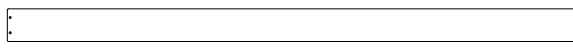
ATTACH (4) J2 END FLOOR CLEATS TO THE INSIDE FACES OF E1, E2 AND E3 FORT UPRIGHTS AND FLUSH TO TOP EDGES OF SP1 FLOOR SUPPORT CLEATS USING (8) 2-1/4" WOOD SCREWS, AS SHOWN.



(3) FP1- FLOOR PANEL - W102861



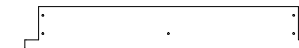
(1) M1 - TENT SUPPORT - W101601
5/8"x3 3/8"x59 1/4" (16x86x1504)



(1) M4 - TARP TOP SUPPORT - W100693
5/8"x3 3/8"x60 1/8" (16x86x1528)



(1) M16 - TARP SUPPORT - W101237
5/8"x3 3/8"x29 1/8" (16x86x740)



(2) L9 - END FLOOR BOARD - W102863
5/8"x4 3/8"x29 7/8" (16x112x760)

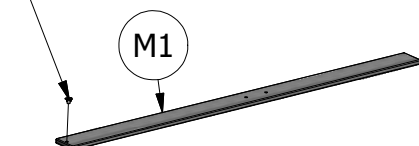
STEP 6

ATTACH (1) L9 END FLOOR BOARD TO (2) J2 END FLOOR CLEATS AND J3 FLOOR JOIST USING (5) 1-1/2" WOOD SCREWS, AS SHOWN.

ATTACH (3) FP1 FLOOR PANELS TO SP1 CLEATS AND J3 FLOOR JOIST USING (45) 1-1/2" WOOD SCREWS, AS SHOWN.

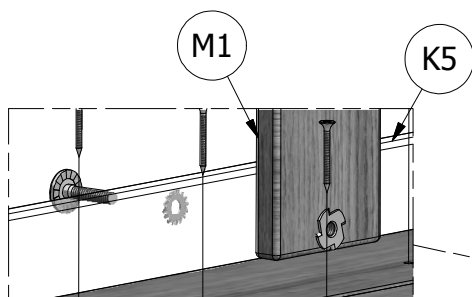
ATTACH (1) L9 END FLOOR BOARD TO (2) J2 END FLOOR CLEATS AND J3 FLOOR JOIST USING (5) 1-1/2" WOOD SCREWS, AS SHOWN.

INSERT 5/16" T-NUT BEFORE
INSTALLING M1 BOARD TO FORT.



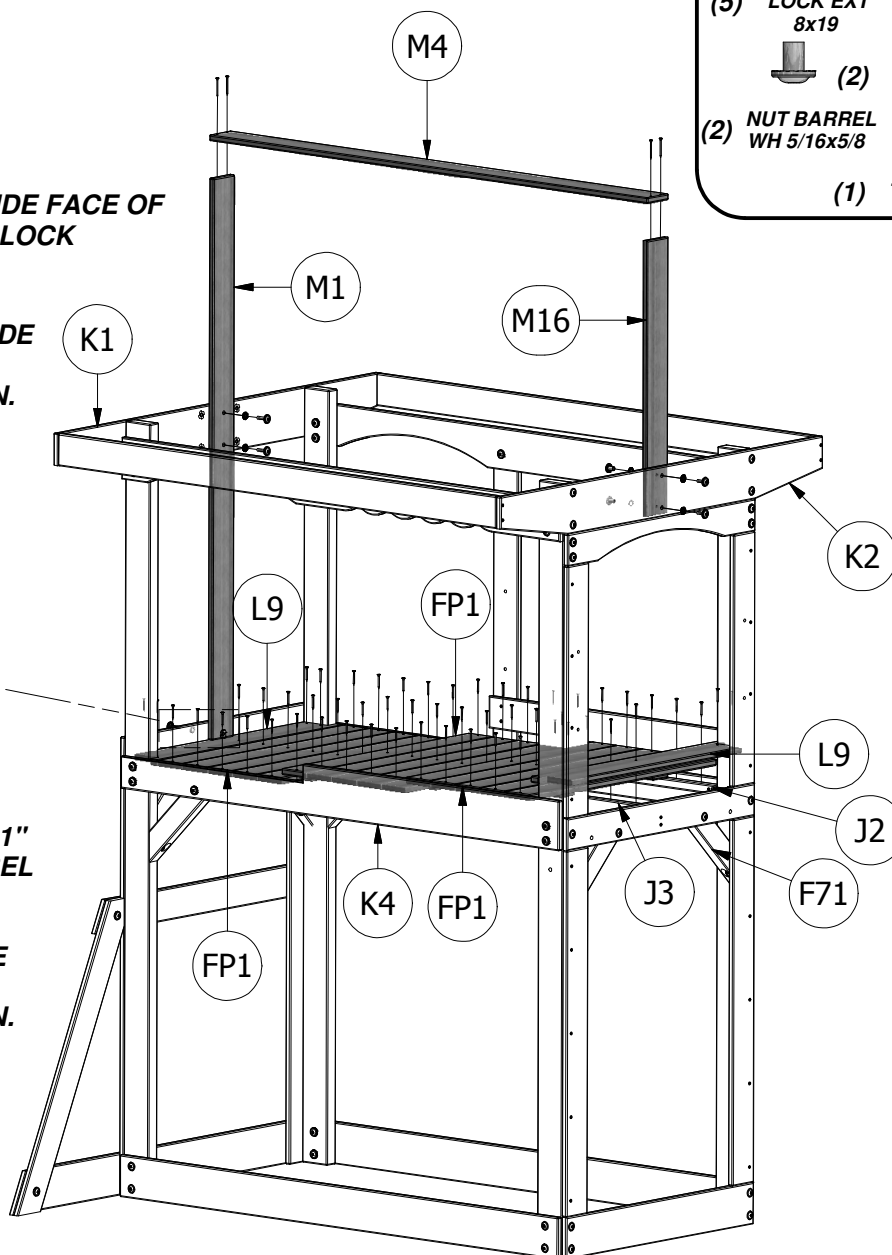
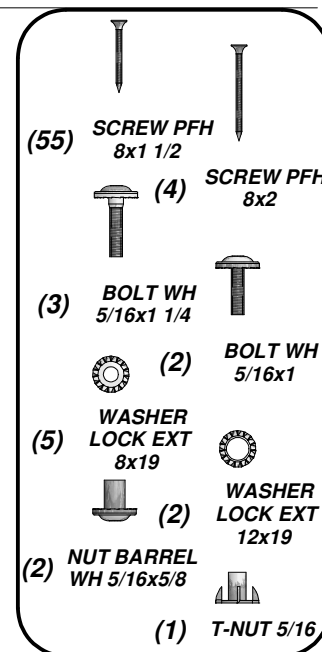
ATTACH M1 TENT SUPPORT TO THE INSIDE FACE OF K5 FLOOR RAIL USING 1-1/4" BOLT AND LOCK WASHER, AS SHOWN.

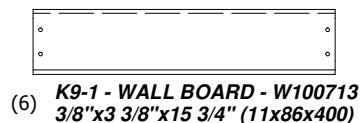
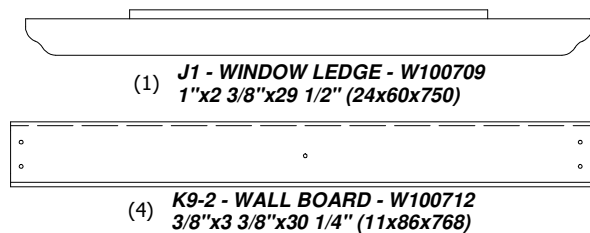
ATTACH M1 TENT SUPPORT TO THE INSIDE FACE OF K1 SUPPORT USING (2) 1-1/4" BOLTS AND LOCK WASHERS, AS SHOWN.



ATTACH M16 TARP SUPPORT TO THE INSIDE FACE OF K2 SUPPORT USING (2) 1" BOLTS, LOCK WASHERS AND 5/8" BARREL NUTS, AS SHOWN.

ATTACH M4 TARP TOP SUPPORT TO THE TOP EDGES OF M1 AND M16 SUPPORTS USING (4) 2" WOOD SCREWS, AS SHOWN.





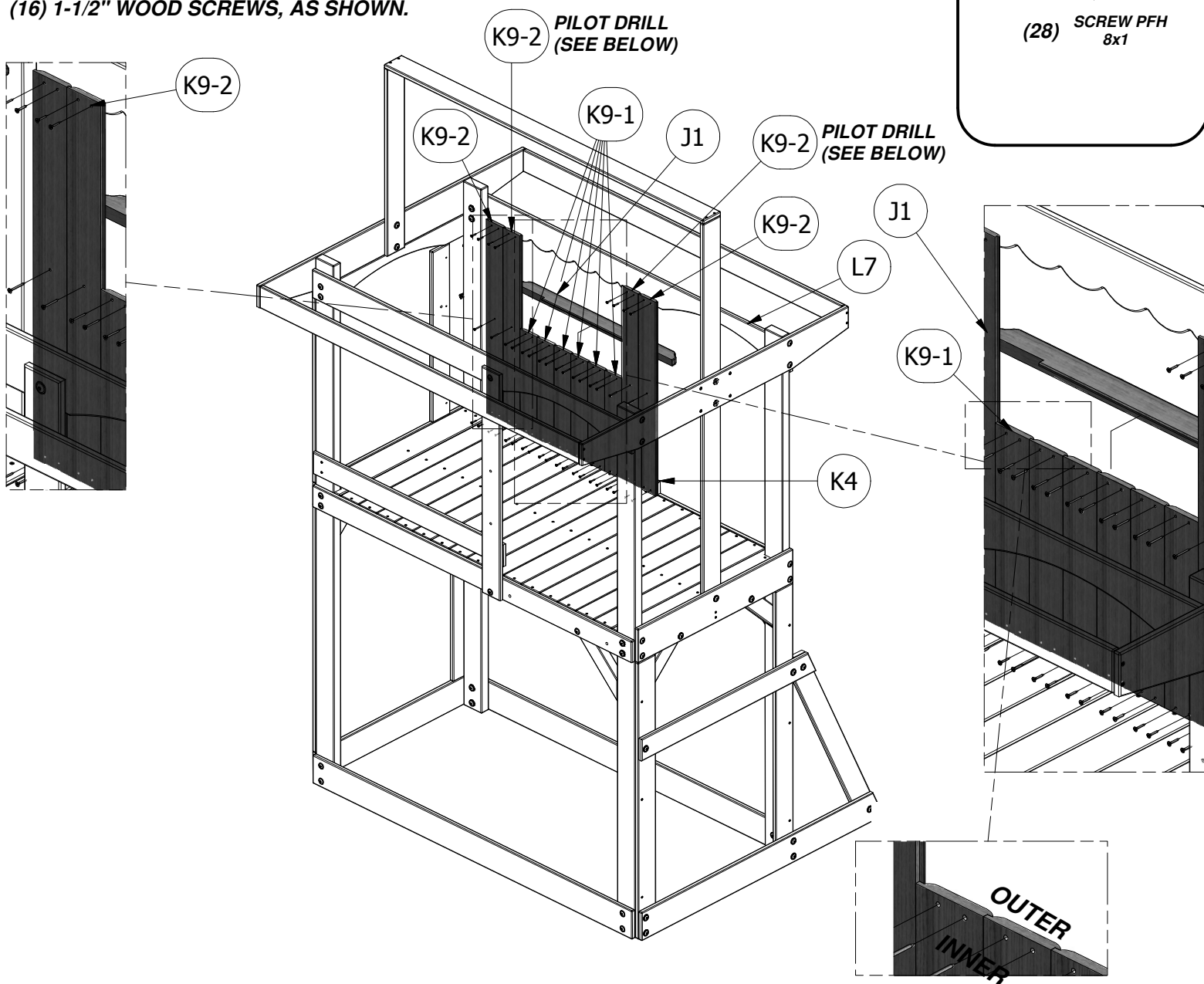
STEP 7

WORKING YOUR WAY LEFT TO RIGHT, ATTACH (2) K9-2 WALL BOARDS TO K4 FLOOR RAIL AND L7 SCULPTURED RAIL USING (8) 1" WOOD SCREWS, AS SHOWN.

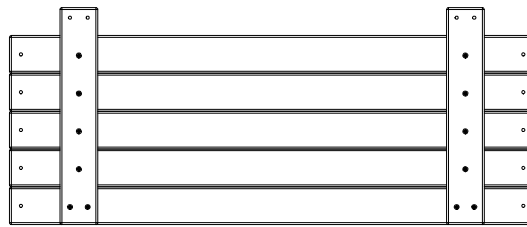
ATTACH (6) K9-1 WALL BOARDS TO K4 FLOOR RAIL USING (12) 1" WOOD SCREWS IN THE BOTTOM SET OF HOLES, AS SHOWN.

ATTACH (2) K9-2 WALL BOARDS TO K4 FLOOR RAIL AND L7 SCULPTURED RAIL USING (8) 1" WOOD SCREWS, AS SHOWN.

ATTACH J1 WINDOW LEDGE TO (6) K9-1 WALL BOARDS PREVIOUSLY INSTALLED USING (16) 1-1/2" WOOD SCREWS, AS SHOWN.



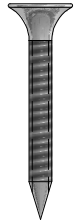
**PROPER INSTALLATION
OF K-9 BOARDS.**



(2) WP1 - WALL PANEL - W102865

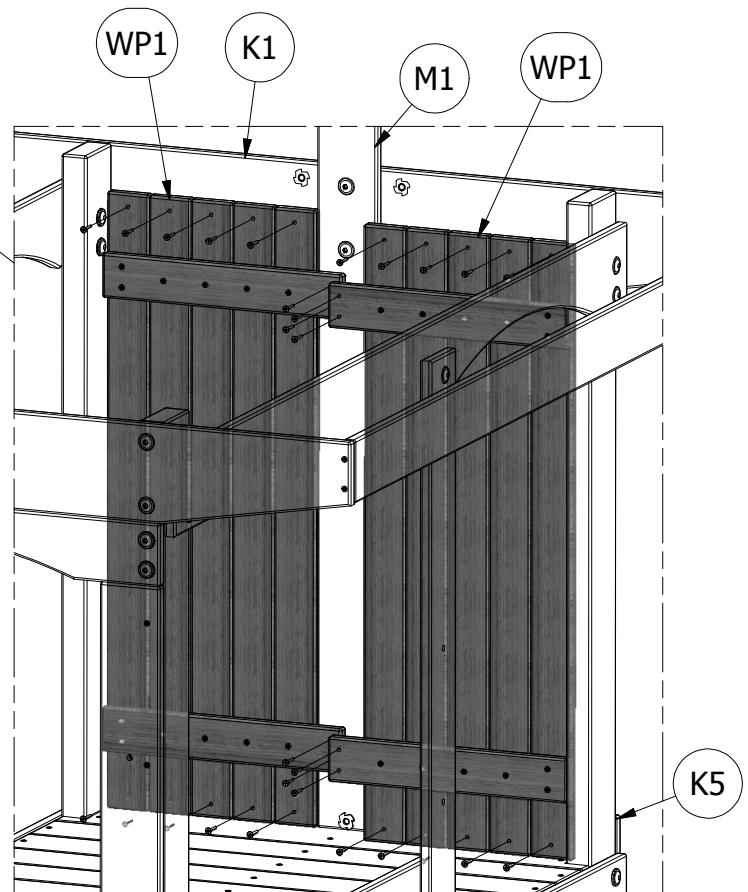
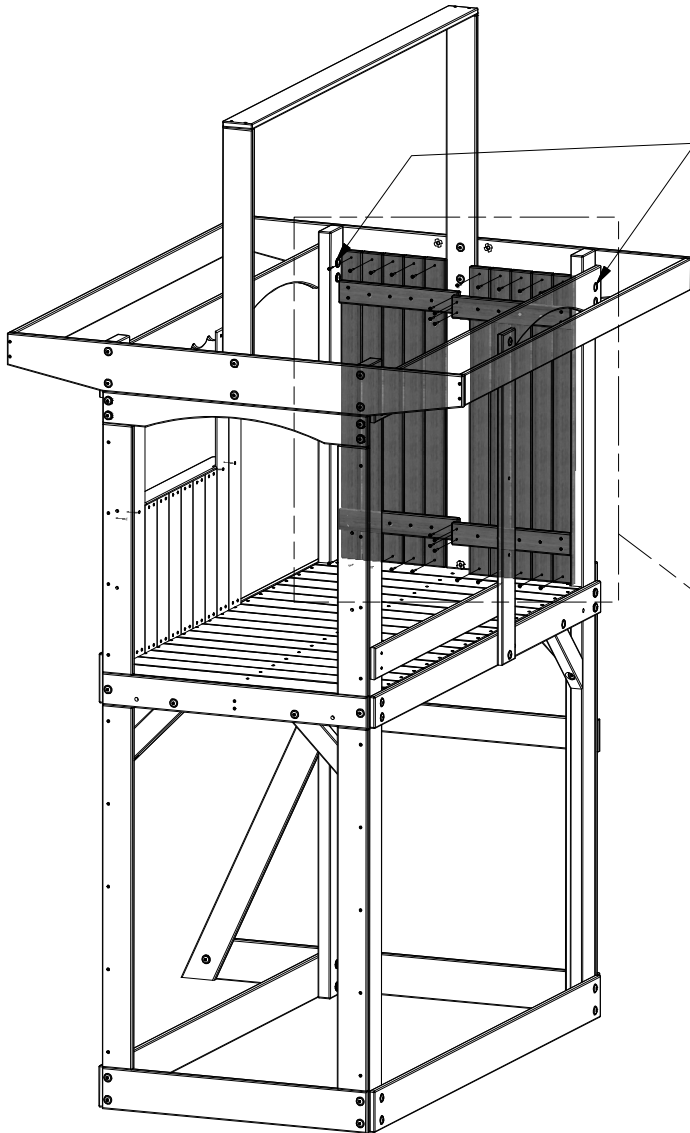
STEP 8

CENTER AND ATTACH (2) WP1 WALL PANELS TO K1 SUPPORT AND K5 FLOOR RAIL USING (28) 1-1/8" WOOD SCREWS, AS SHOWN.



(28) SCREW PFH
8x1 1/8

ASSEMBLER MAY HAVE TO LOOSEN OR REMOVE BOLTS AND BARRELS TO INSTALL WP1 PANELS.

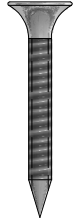




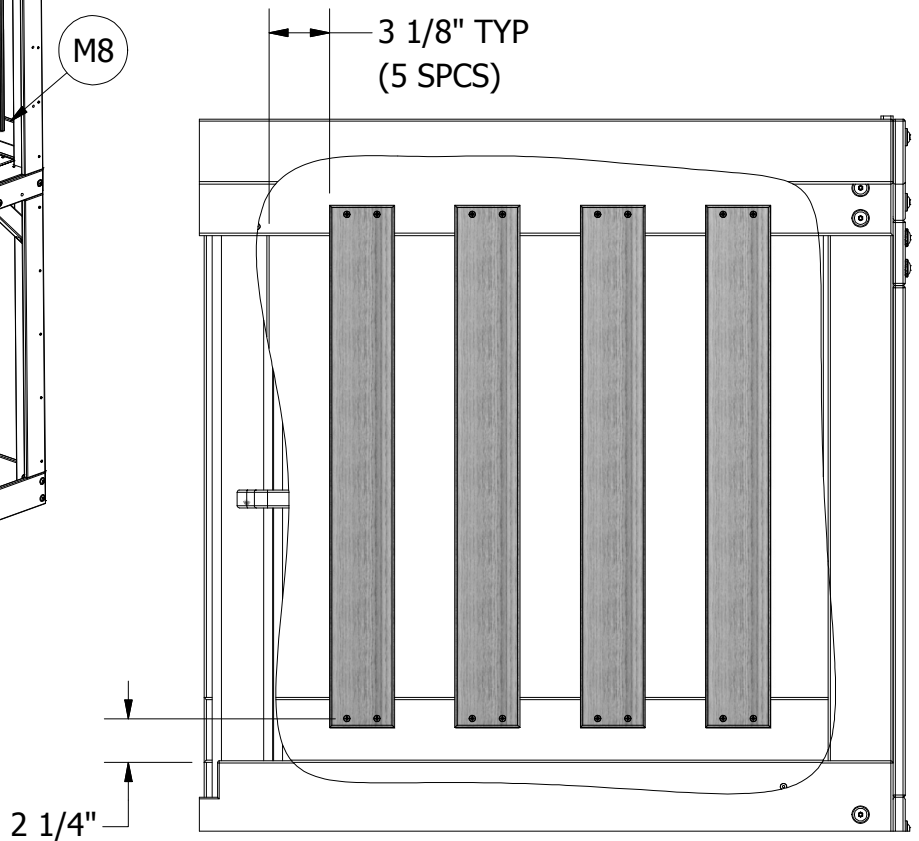
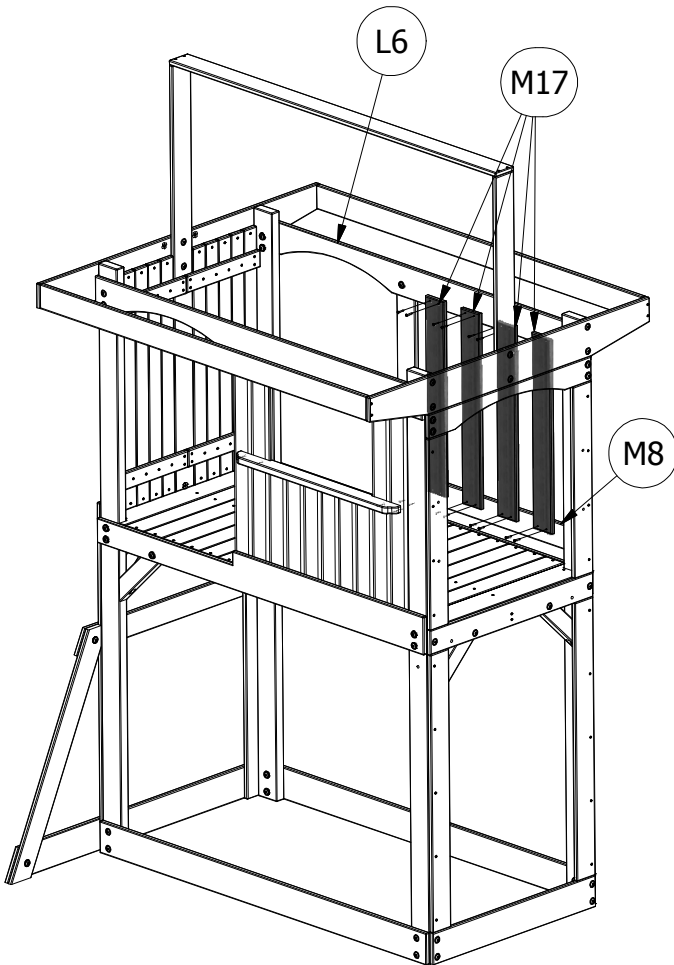
(4) **M17 - PICKET - W100705**
5/8"x3 3/8"x27 1/8" (16x86x690)

STEP 9

ATTACH (4) M17 PICKETS TO M8 WALL RAIL AND L6 ARCHED RAIL USING (16) 1-1/8" WOOD SCREWS, AS SHOWN.



(16) **SCREW PFH**
8x1 1/8



(1) **H1 - SERVING SHELF SUPPORT - W101604**
1"x3 3/8"x30 3/4" (24x86x780)

(1) **K3 - SERVING BOARD - W101605**
5/8"x5 1/4"x28 3/4" (16x134x729)

(2) **K9-4 - WALL BOARD - W101239**
3/8"x3 3/8"x37 3/8" (11x86x950)

(2) **H3 - SERVING BOARD SUPPORT - W101606**
1"x3 3/8"x3 3/8" (24x86x86)

(1) **L8 - SCULPTURED RAIL - W101240**
5/8"x4 3/8"x35 1/2" (16x112x902)

(2) **K9-3 - WALL BOARD - W101257**
3/8"x3 3/8"x42" (11x86x1068)

(6) **K9-5 - WALL BOARD - W101259**
3/8"x3 3/8"x21 3/8" (11x86x544)

STEP 10

ATTACH (2) H3 SERVING BOARD SUPPORTS TO H1 SERVING SHELF SUPPORT USING (4) 2" WOOD SCREWS, AS SHOWN.

STEP 11

WORKING FROM LEFT TO RIGHT, ATTACH K9-3 WALL BOARD TO L2 GROUND BOARD AND L1 FLOOR RAIL USING (4) 1" SCREWS, AS SHOWN.

NEXT, ATTACH K9-4 WALL BOARD TO L2 GROUND BOARD USING (2) 1" WOOD SCREWS, AS SHOWN.

NOW, ATTACH (6) K9-5 WALL BOARDS TO L2 GROUND BOARD USING (12) 1" WOOD SCREWS, AS SHOWN.

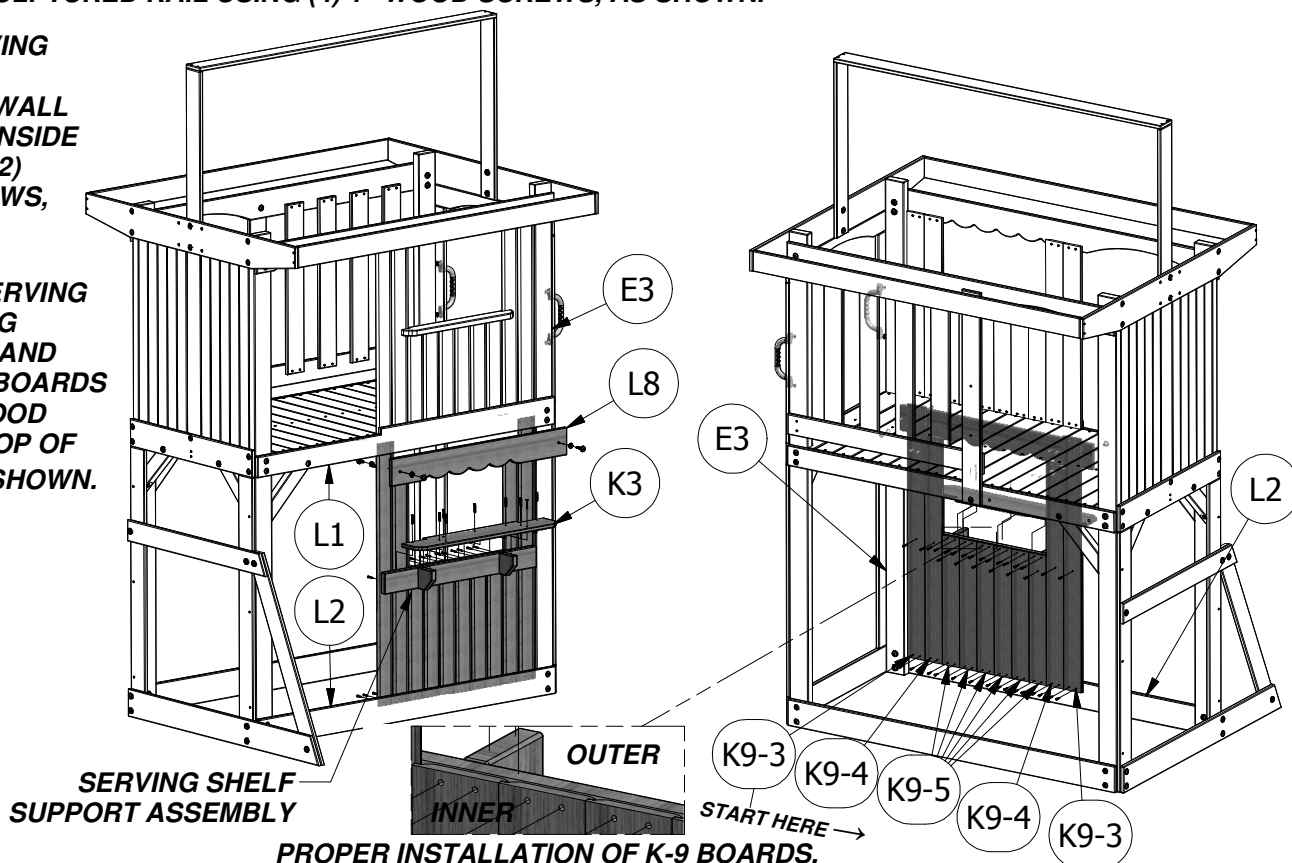
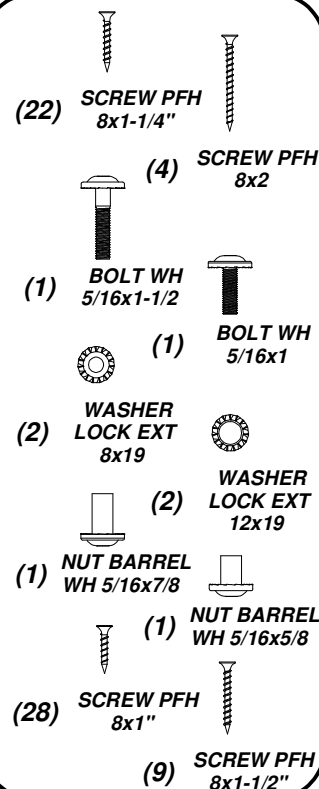
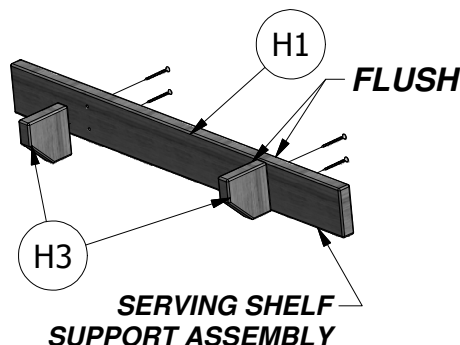
NEXT, ATTACH ANOTHER K9-4 WALL BOARD TO L2 GROUND BOARD USING (2) 1" WOOD SCREWS, AS SHOWN.

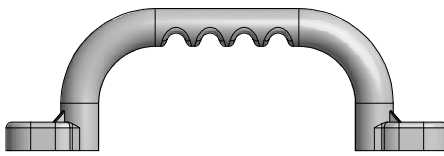
ATTACH THE LAST K9-3 WALL BOARD TO L2 GROUND BOARD AND L1 FLOOR RAIL USING (4) 1" SCREWS, AS SHOWN.

USING L8 RAIL AS A TEMPLATE, MARK AND DRILL (1) 3/8" HOLE THROUGH K9-3 BOARD AND ATTACH L8 SCULPTURED RAIL TO (2) K9-3 WALL BOARDS AND E3 UPRIGHT USING 1-1/2" BOLT, LOCK WASHERS AND 7/8" BARREL NUT AT THE TOP RIGHT AND 1" BOLT, LOCK WASHERS AND 5/8" BARREL NUT AT THE TOP LEFT. SECURE THE TOP OF K9-4 BOARDS TO L8 SCULPTURED RAIL USING (4) 1" WOOD SCREWS, AS SHOWN.

ATTACH THE SERVING SHELF SUPPORT ASSEMBLY TO K9 WALL BOARDS, ON THE INSIDE OF FORT, USING (22) 1-1/4" WOOD SCREWS, AS SHOWN.

ATTACH THE K3 SERVING BOARD TO SERVING SHELF ASSEMBLY AND CENTER K9 WALL BOARDS USING (9) 1-1/2" WOOD SCREWS AT THE TOP OF K9-5 BOARDS, AS SHOWN.





(4) EA - HAND GRIP YELLOW PLASTIC - A100043

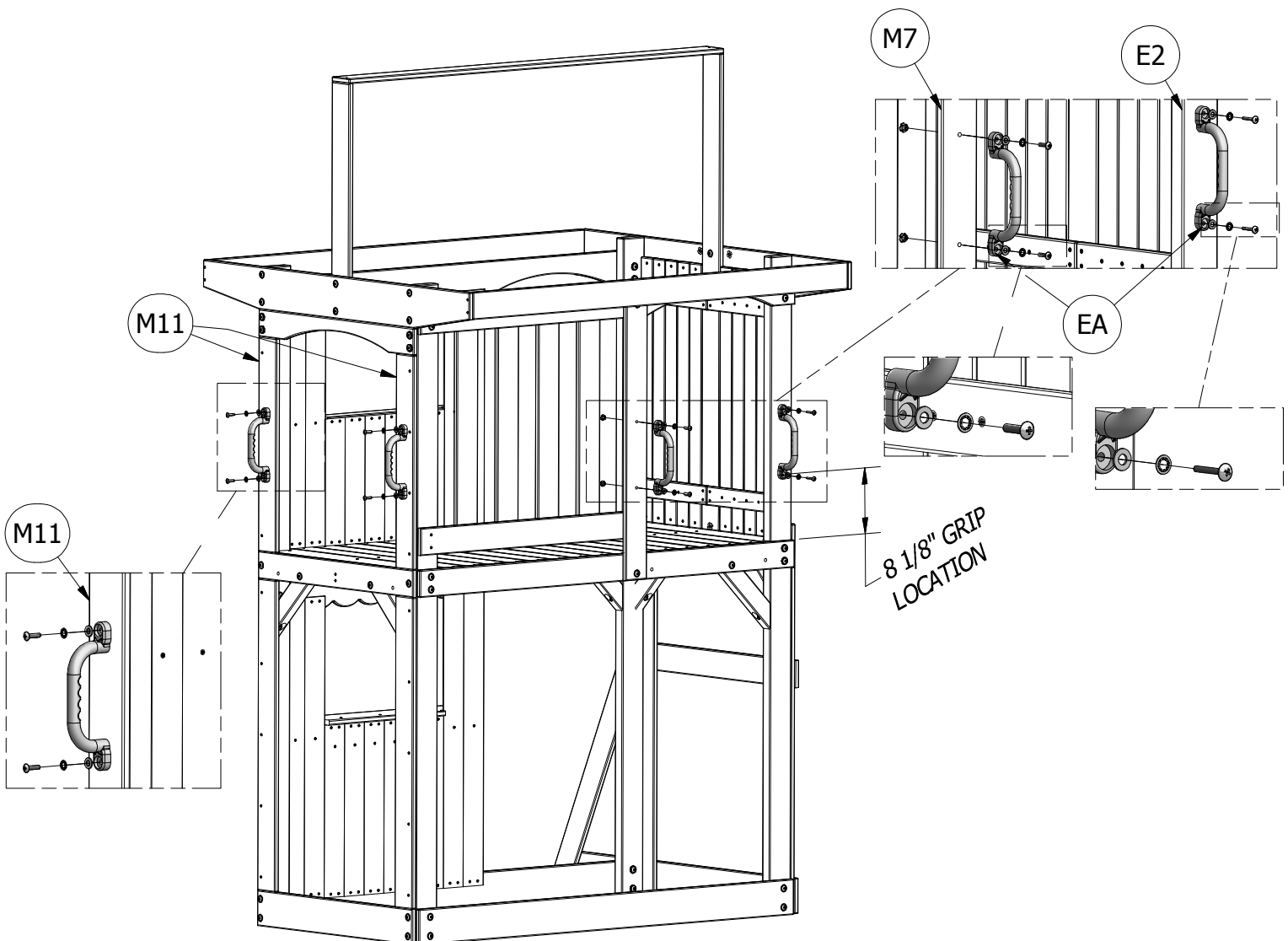
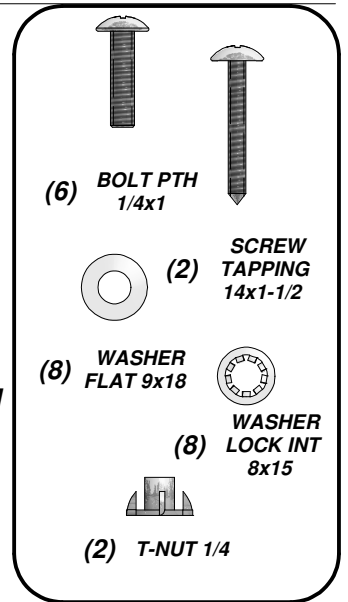
STEP 12

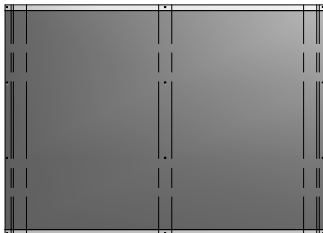
INSERT (2) 1/4" T-NUTS INTO INSIDE SURFACE OF M7 AND M11 WALL BOARD, AS SHOWN.

NEXT, ATTACH EA HANDLE GRIP TO M7 WALL BOARD USING (2) 1" PTH BOLTS, LOCK WASHERS AND FLAT WASHERS, AS SHOWN.

USING HANDLE GRIP AS A TEMPLATE, PILOT DRILL USING A 1/8" DRILL BIT AND ATTACH THE SECOND EA HANDLE GRIP TO E2 UPRIGHT USING (2) 1-1/2" TAPPING SCREWS, LOCK WASHERS AND FLAT WASHERS, AS SHOWN.

ATTACH THE REMAINING (2) EA HANDLE GRIPS TO (2) M11 FACE BOARDS USING (4) 1" PTH BOLTS, LOCK WASHERS AND FLAT WASHERS, AS SHOWN.



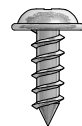


- (1) **HY - TARP 1522x2119 - A100062**
1/32"x59 7/8"x83 3/8" (.4x1522x2119)

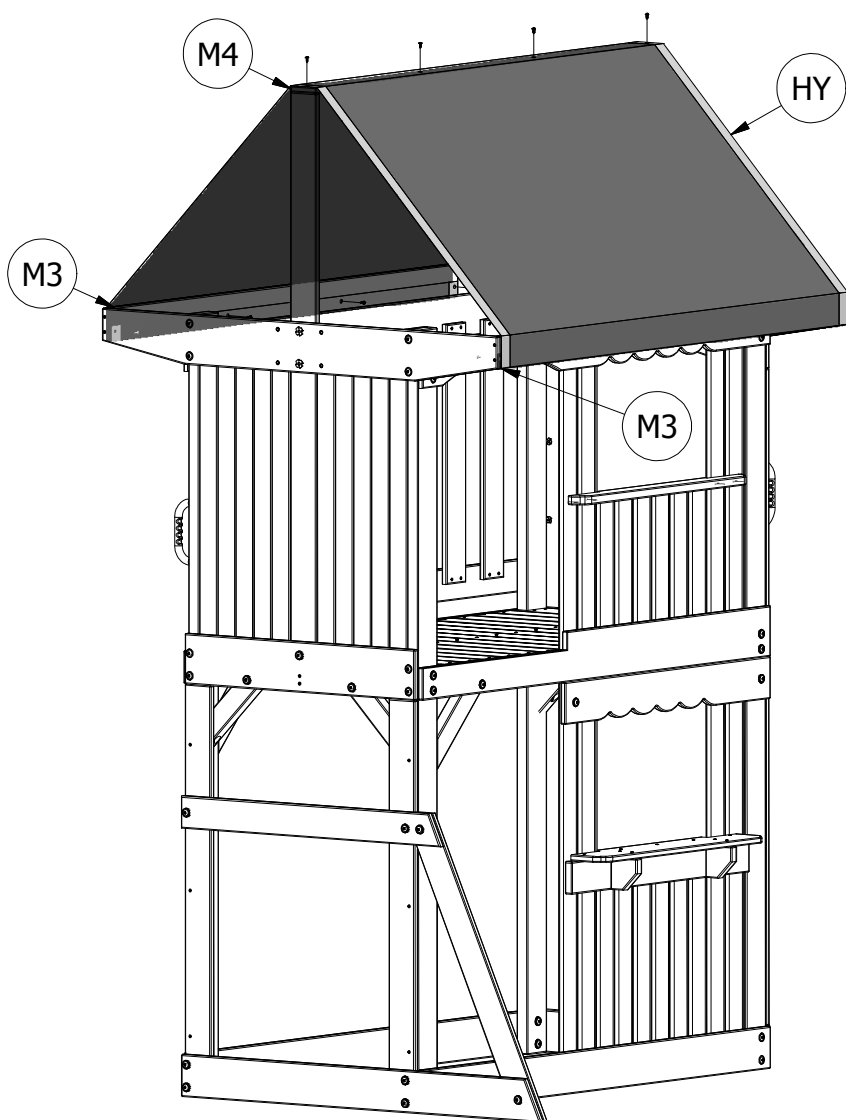
STEP 13

CENTER HY TARP OVER M4 TARP TOP SUPPORT AND ATTACH USING (4) 1/2" TAPPING SCREWS, AS SHOWN.

NEXT, DRAPE HY TARP EVENLY OVER (2) M3 TARP SUPPORTS AND WRAP UNDERNEATH AND UP THE BACK SIDE OF M3 SUPPORT APPROXIMATELY 1-13/16" FROM THE TOP AND ATTACH USING (8) 1/2" TAPPING SCREWS, AS SHOWN.



- (12) **SCREW
TAPPING
8x1/2**



(2) **M2 - BENCH SEAT - W104044**
5/8"x3 3/8"x27 3/8" (16x86x694)

(2) **H4 - BENCH SEAT SUPPORT - W104040**
1"x3 3/8"x6 1/2" (24x86x166)

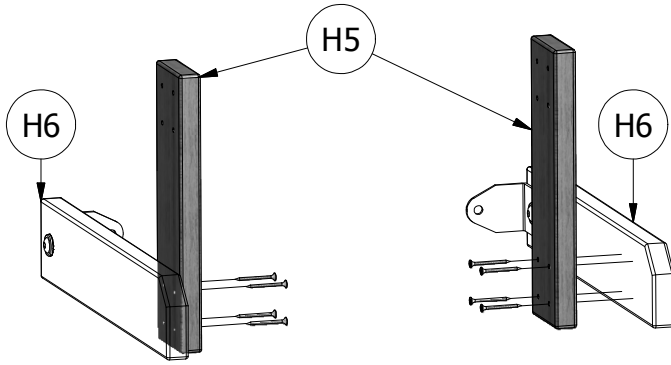
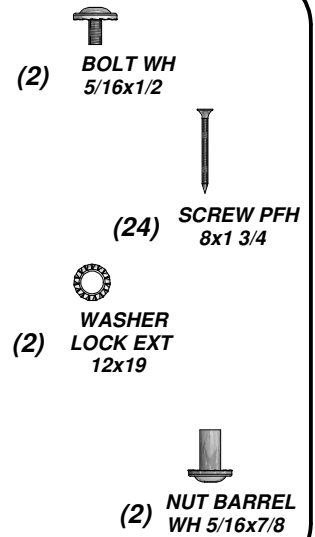
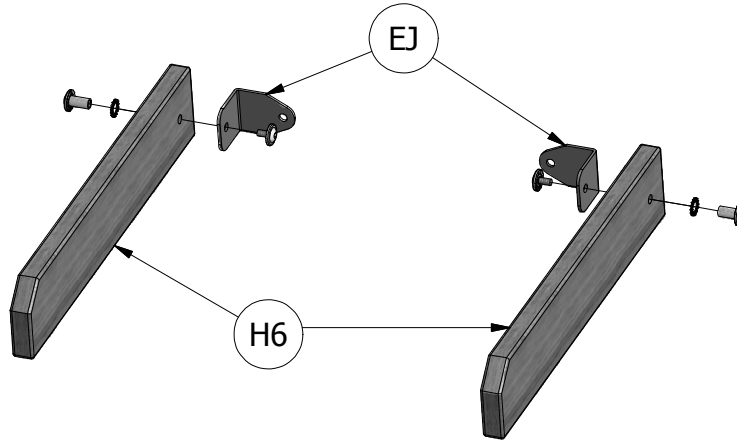
(2) **EJ - L BRACKET 54x67 - A100053**

(2) **H5 - BENCH UPRIGHT - W104041**
1"x3 3/8"x11 3/4" (24x86x300)

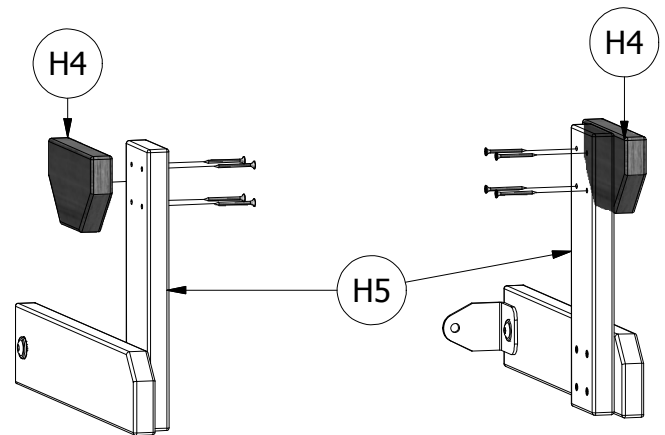
(2) **H6 - BENCH GROUND BOARD - W104042**
1"x3 3/8"x18 1/8" (24x86x460)

STEP 14

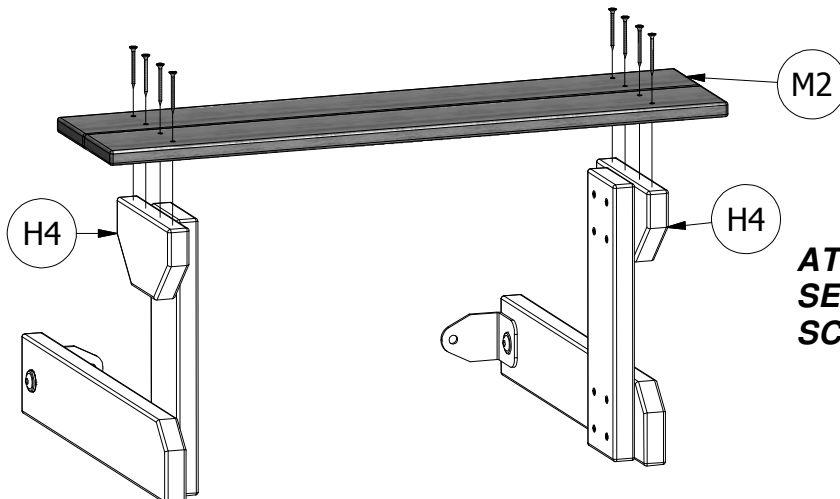
ATTACH (2) EJ BRACKETS TO H6 BENCH GROUND BOARDS USING (2) 1/2" BOLT, LOCK WASHERS AND 7/8" BARREL NUT, AS SHOWN.



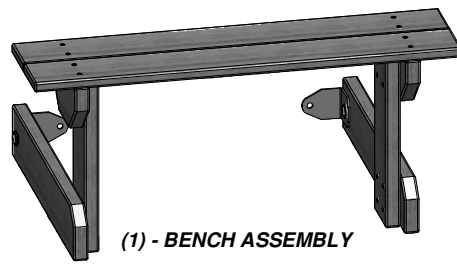
ATTACH H5 BENCH UPRIGHTS TO H6 BENCH GROUND BOARDS USING (8) 1-3/4" WOOD SCREWS, AS SHOWN.



ATTACH H4 BENCH SEAT SUPPORTS TO H5 BENCH UPRIGHTS USING (8) 1-3/4" WOOD SCREWS, AS SHOWN.



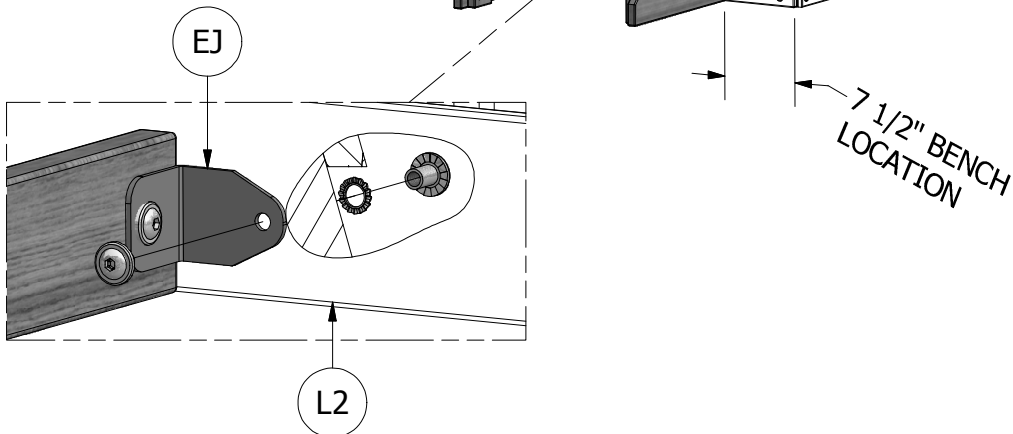
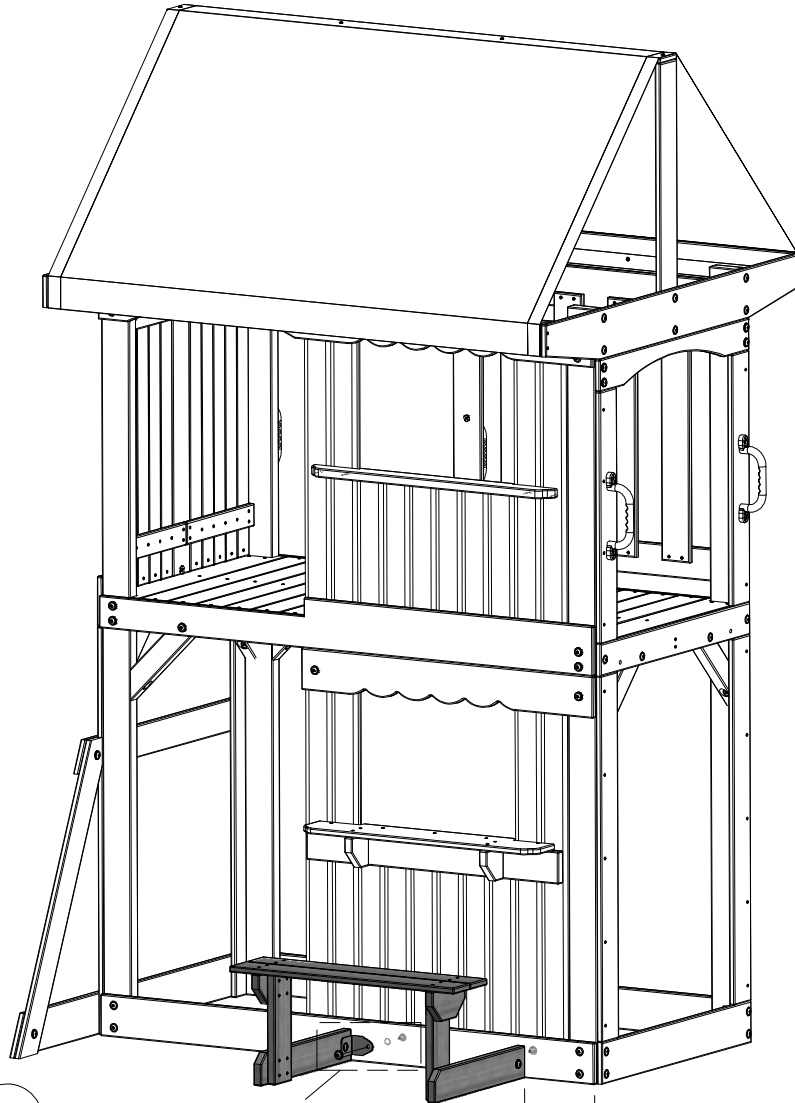
ATTACH M2 BENCH SEATS TO H4 BENCH SEAT SUPPORTS USING (8) 1-3/4" WOOD SCREWS, AS SHOWN.



(1) - BENCH ASSEMBLY

STEP 15

USING BENCH ASSEMBLY BRACKETS AS A TEMPLATE, DRILL TWO 10MM THRU HOLES AND ATTACH EJ BRACKET TO L2 GROUND BOARD USING (2) 1/2" BOLTS, LOCK WASHERS AND 5/8" BARREL NUTS, AS SHOWN.



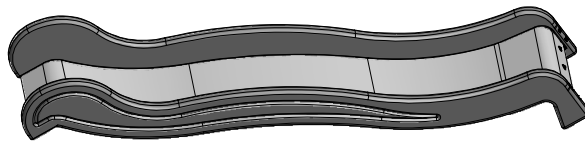
(2) BOLT WH
5/16x1/2



(2) WASHER
LOCK EXT
12x19



(2) NUT BARREL
WH 5/16x5/8



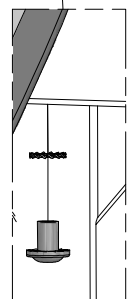
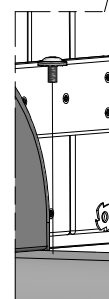
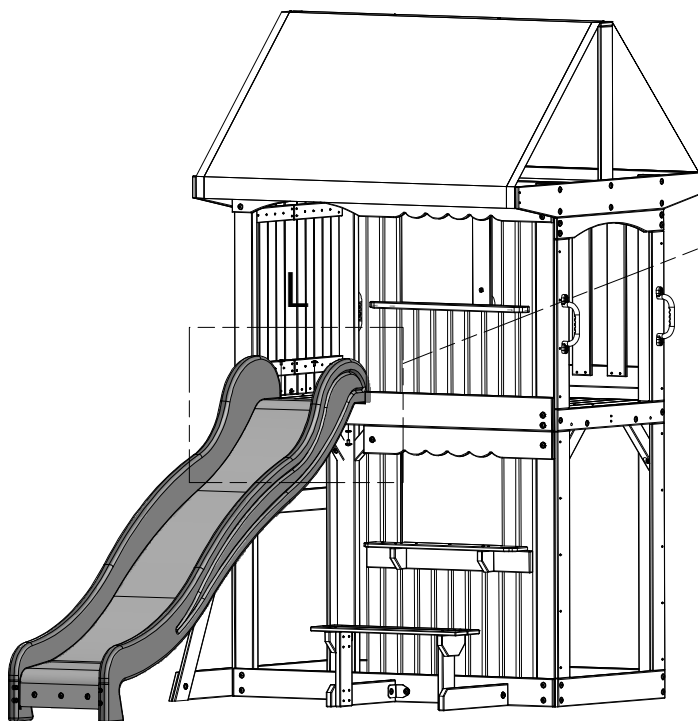
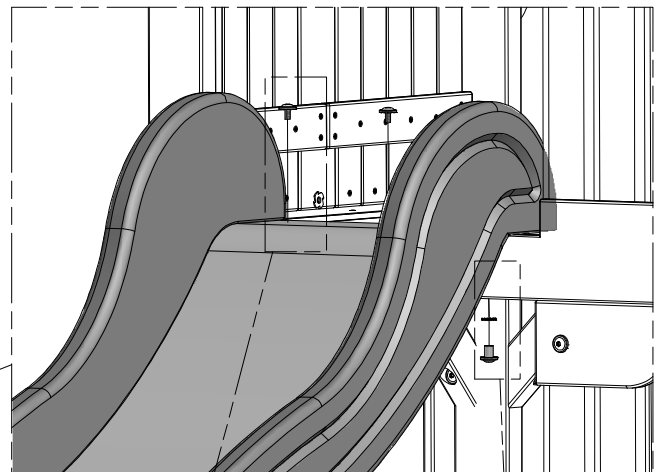
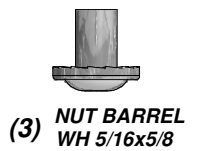
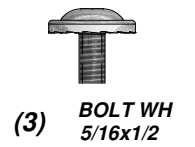
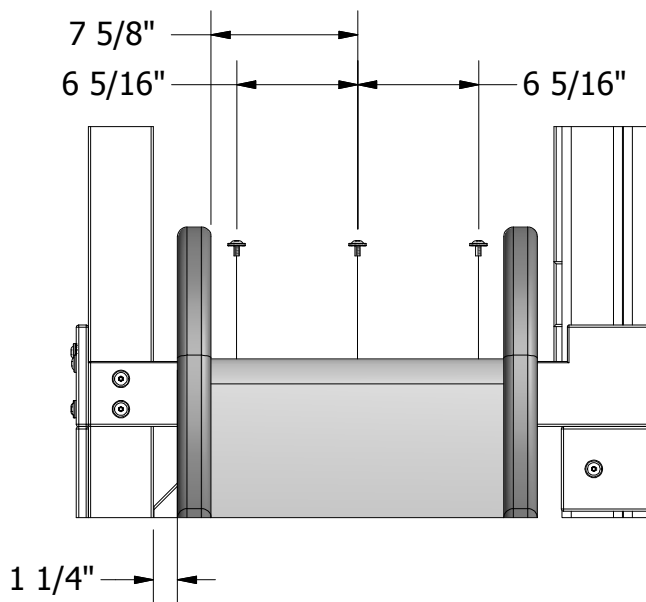
(1) - SLIDE ASSEMBLY

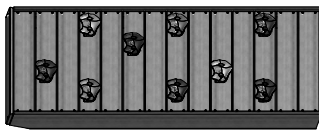
STEP 16

CENTER THE WAVE SLIDE ASSEMBLY IN OPENING, AS SHOWN.

USING A 10MM DRILL BIT, DRILL THREE THROUGH HOLES INTO THE SLIDE BED AND DECK BOARDS, AS SHOWN BELOW.

ATTACH THE SLIDE ASSEMBLY TO THE DECK USING (3) 1/2" BOLTS, LOCK WASHERS AND 5/8" BARREL NUTS, AS SHOWN.



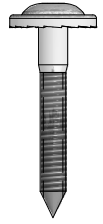
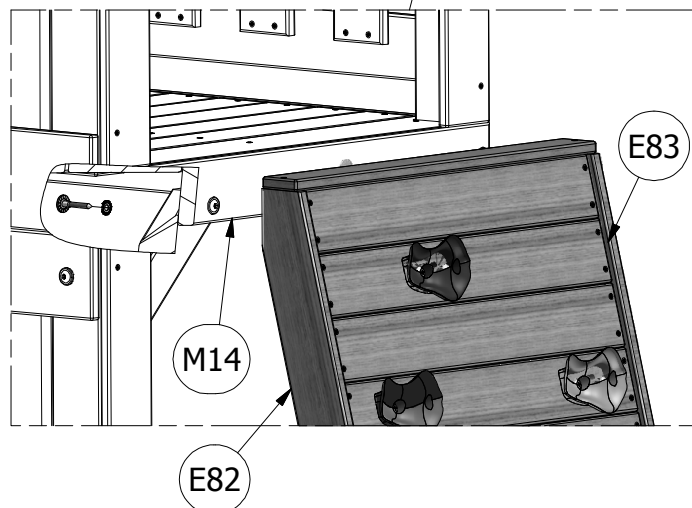
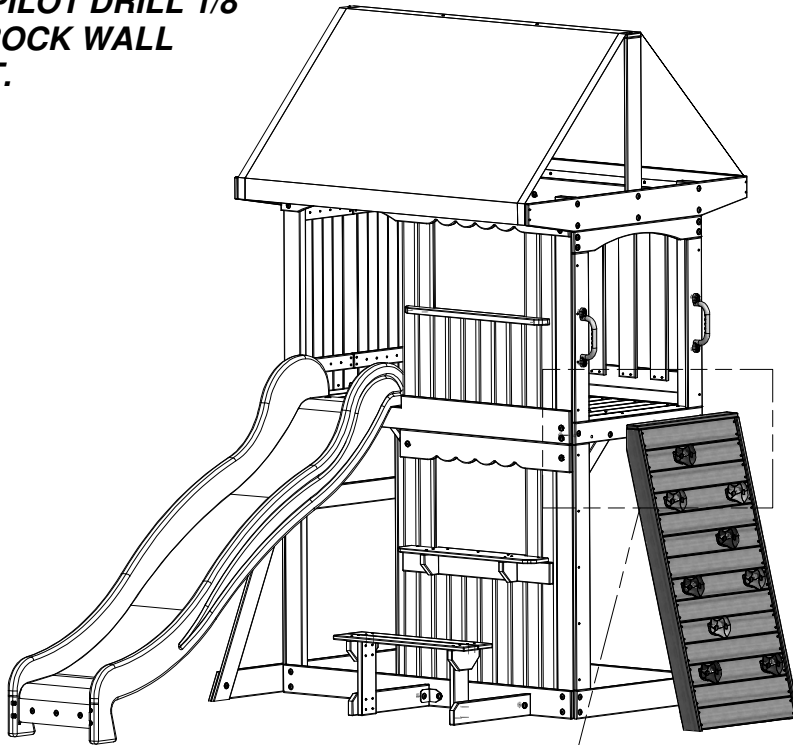


(1) - ROCK WALL ASSEMBLY

STEP 17

ATTACH THE ROCK WALL ASSEMBLY TO M14 FLOOR BOARD SUPPORT USING (2) 2" LAG SCREWS AND LOCK WASHERS, AS SHOWN.

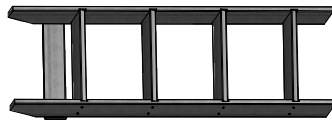
CENTER ROCK WALL ON 'M14' BOARD AND PILOT DRILL 1/8" HOLES FOR ROCK WALL ATTACHMENT.



(2) LAG SCREW
WH 5/16x2



(2) WASHER
LOCK EXT
8x19

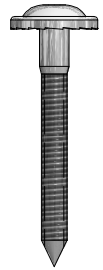


(1) - LADDER ASSEMBLY

STEP 18

ATTACH THE LADDER ASSEMBLY TO M13 FLOOR RAIL SUPPORT USING (2) 2-1/2" LAG SCREWS AND LOCK WASHERS, AS SHOWN.

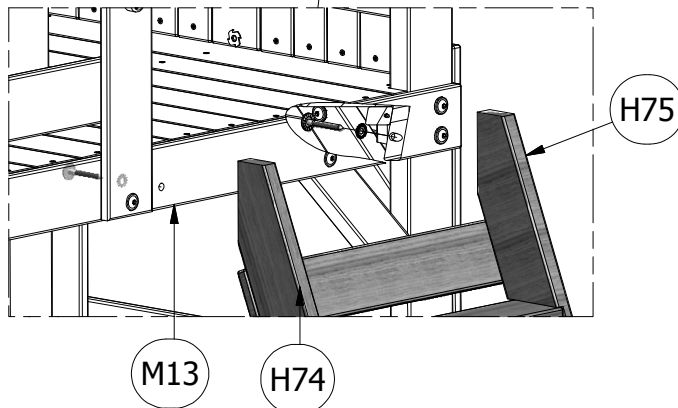
CENTER LADDER ON 'M13' BOARD AND PILOT DRILL 1/8" HOLES FOR LADDER ATTACHMENT.



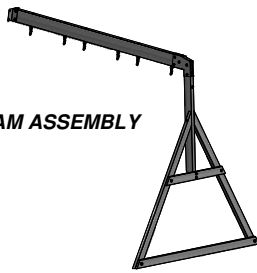
(2) LAG SCREW
WH 5/16x2 1/2



(2) WASHER
LOCK EXT
8x19



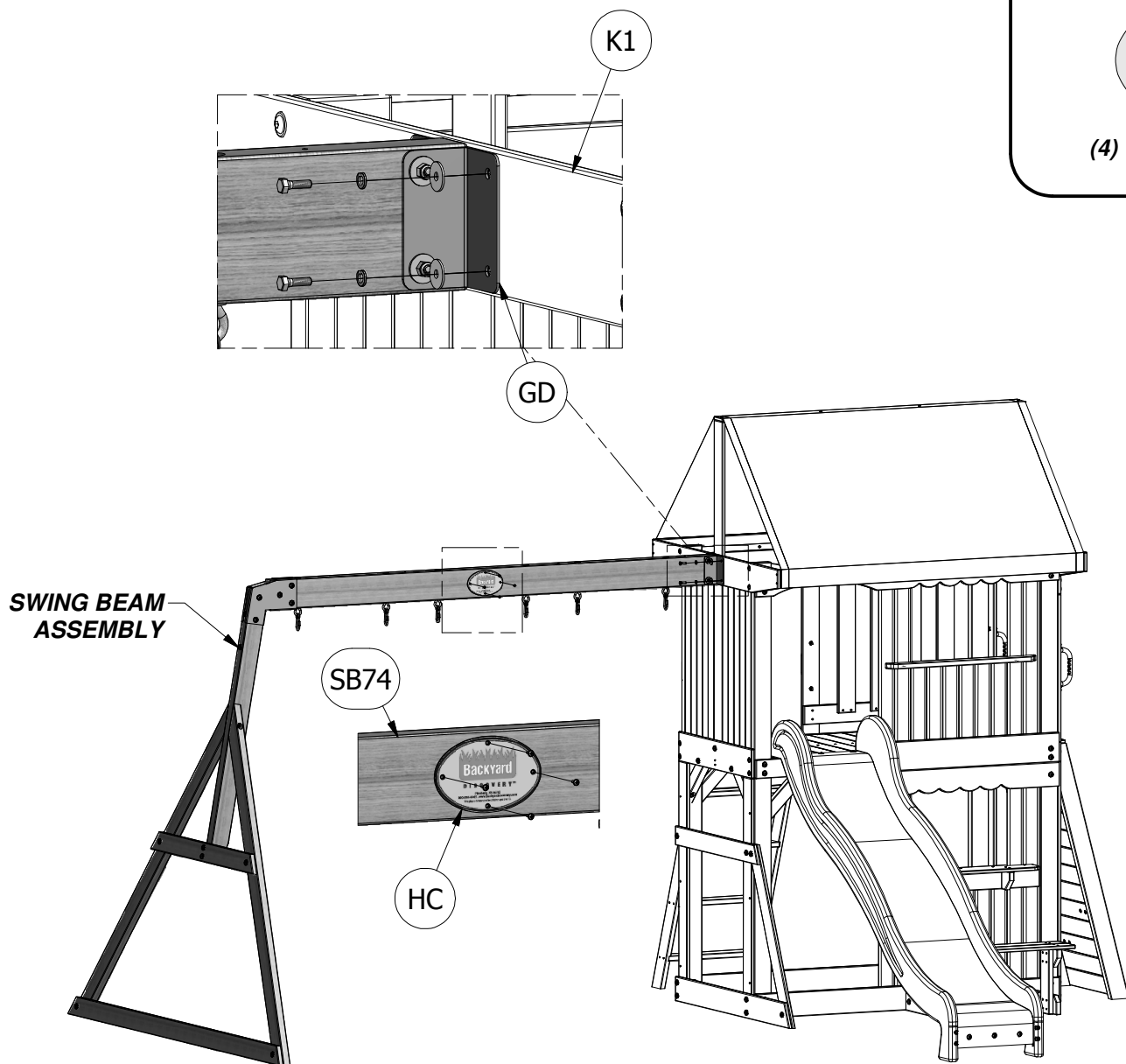
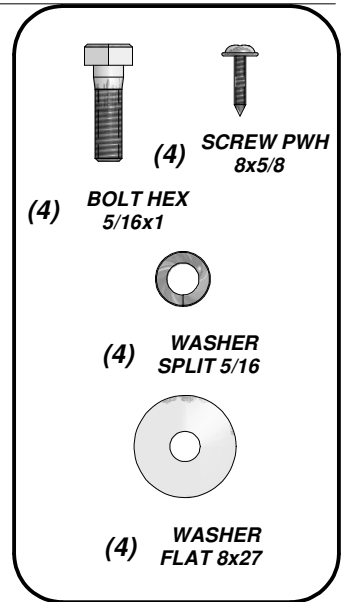
(1) - SWING BEAM ASSEMBLY



STEP 19

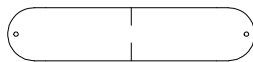
ATTACH SWING BEAM ASSEMBLY TO K1 ROOF SWING BEAM SUPPORT USING (4) 1" BOLTS, SPLIT WASHERS AND FLAT WASHERS, AS SHOWN BELOW.

ATTACH HC I.D. TAG TO SB74 SWING BEAM USING (4) 5/8" PFH SCREWS, AS SHOWN.





(4) EZ - CHAIN GREEN 51.25" - A100068



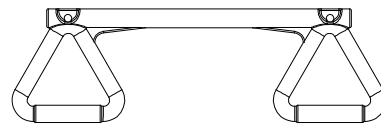
(2) FB - SWING SEAT YELLOW - A100070



(2) KN - CHAIN GREEN 31" - A100177



(6) FA - QUICK LINK - A100069



(1) - TRAPEZE - A6P00034

STEP 20

ATTACH FB SWING SEAT TO (2) EZ CHAINS USING (2) FA QUICK LINKS, AS SHOWN (FIG. 1). REPEAT PROCESS TO ASSEMBLE SECOND SWING ASSEMBLY. NOW, ATTACH EZ CHAINS TO SWING HANGER QUICK LINKS ALREADY ASSEMBLED TO THE SWING BEAM (FIG. 2).

ATTACH TRAPEZE TO (2) FW CHAINS USING (2) FA QUICK LINKS. (FIG. 3)

ATTACH (2) FW CHAINS TO SWING HANGER QUICKLINKS ALREADY ASSEMBLED TO THE SWING BEAM. (FIG. 4)

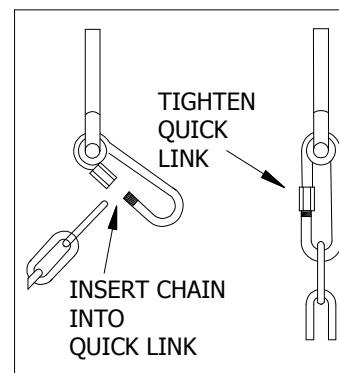
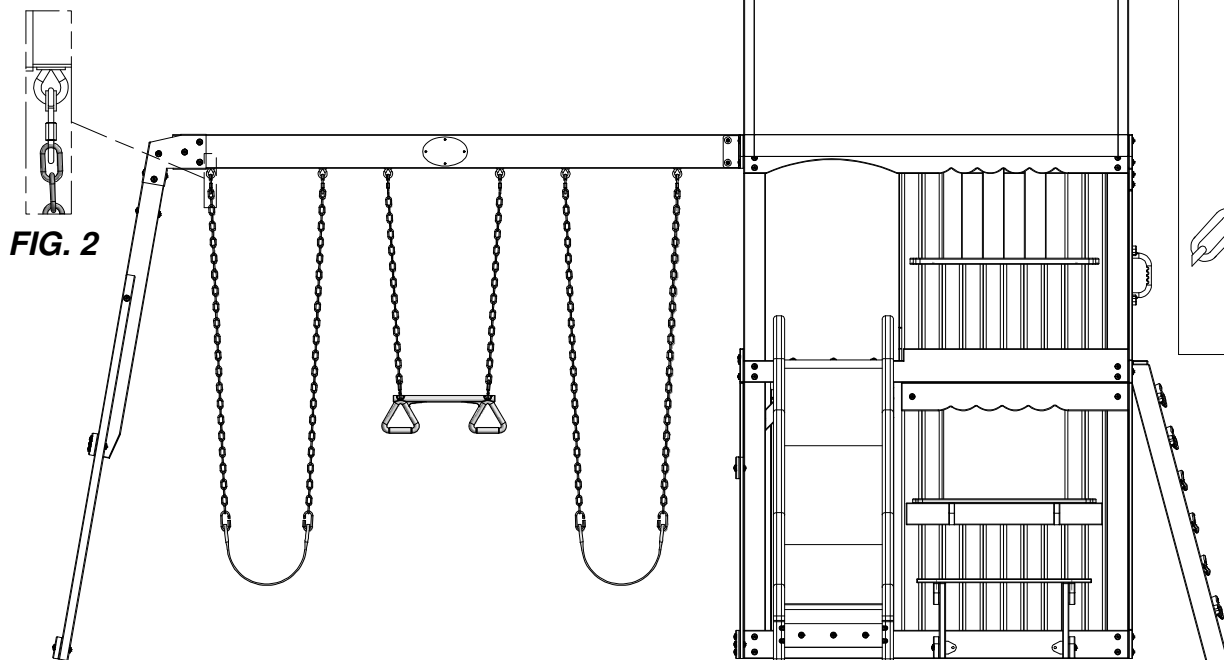


FIG. 4

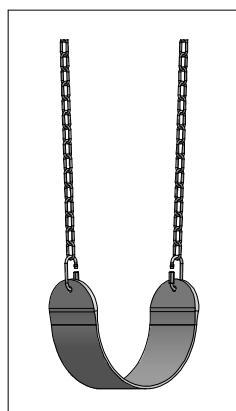


FIG. 1

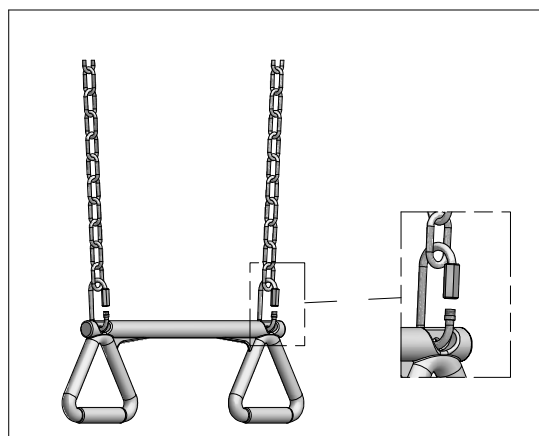


FIG. 3



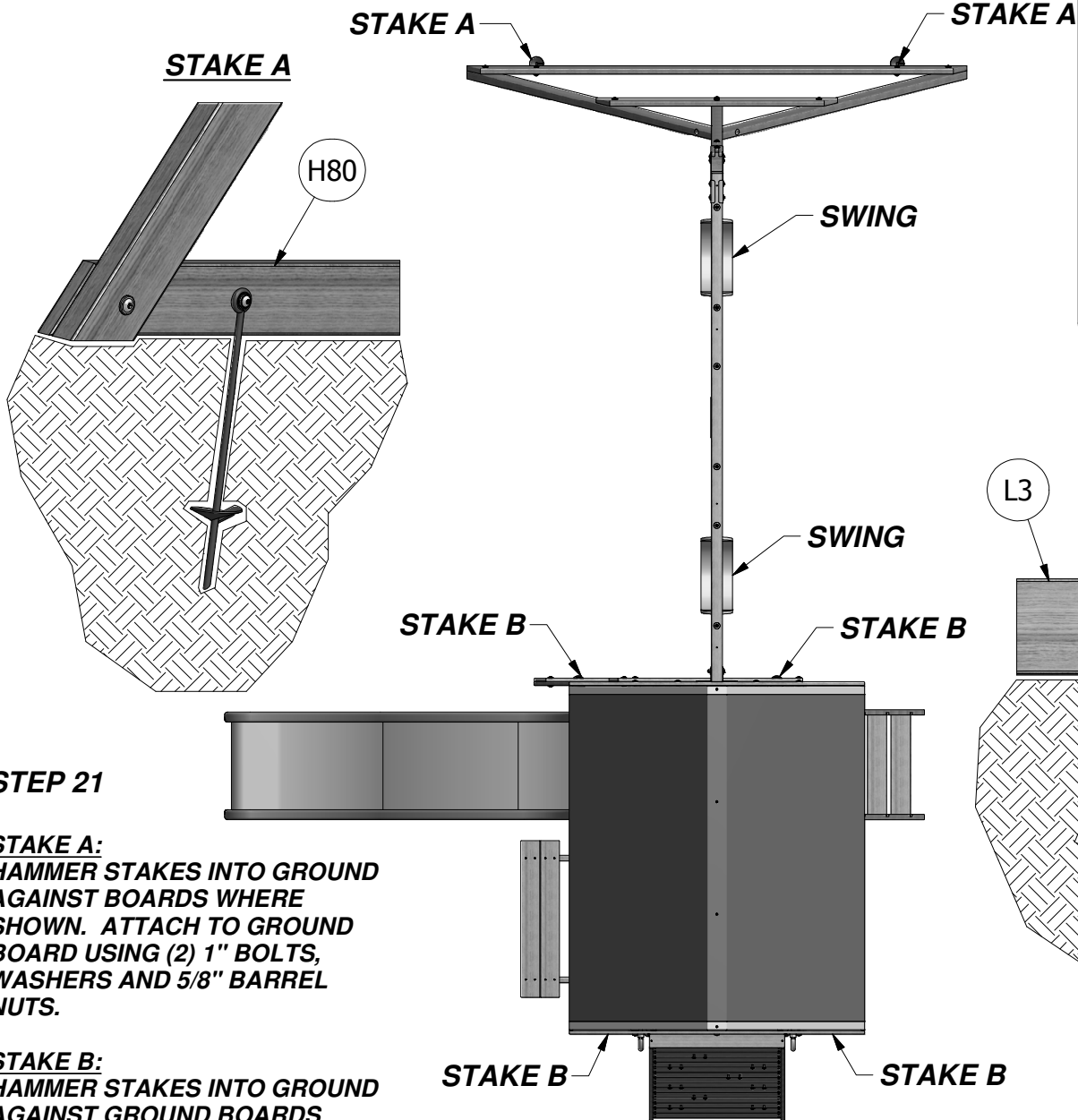
(6) KC - METAL GROUND STAKE BROWN - A100178

(1) SS - "C" REVISION TAG - A100316

ANCHORING INSTRUCTIONS

NOTE:

FAILURE TO USE GROUND STAKES CAN VOID WARRANTY & CAUSE INJURY!



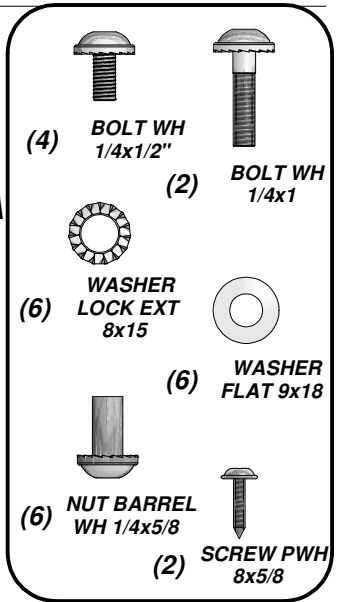
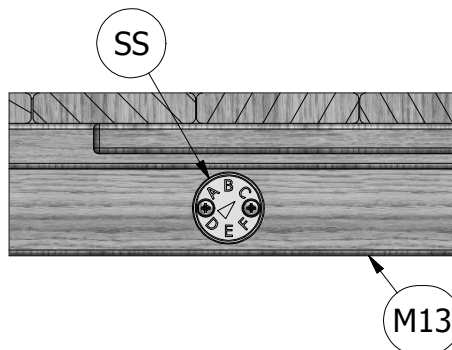
STEP 21

STAKE A:
HAMMER STAKES INTO GROUND AGAINST BOARDS WHERE SHOWN. ATTACH TO GROUND BOARD USING (2) 1" BOLTS, WASHERS AND 5/8" BARREL NUTS.

STAKE B:
HAMMER STAKES INTO GROUND AGAINST GROUND BOARDS WHERE SHOWN. ATTACH TO FORT ASSEMBLY USING (4) 1/2" BOLTS, WASHERS AND 5/8" BARREL NUTS, AS SHOWN.

STEP 22

ATTACH SS I.D.TAG TO THE INSIDE OF M13 FLOOR RAIL USING (2) 5/8" PWH SCREWS, AS SHOWN.



FINAL STEP

DOUBLE CHECK EVERY BOLT, SCREW AND NUT FOR TIGHTNESS. MAKE SURE EVERY BOARD IS SECURE AND MAKE SURE THE PLAY SET IS LEVEL.

ENJOY YOUR NEW PLAY SET!

WARRANTY

AUSTRALIAN CONSUMER LAW

Many of our products come with a guarantee or warranty from the manufacturer. In addition, they come with guarantees that cannot be excluded under the Australian Consumer law. You are entitled to a replacement or refund for a major failure and compensation for any other reasonably foreseeable loss or damage.

You are entitled to have the goods repaired or replaced if the goods fail to be of acceptable quality and the failure does not amount to a major failure. Full details of your consumer rights may be found at

www.consumerlaw.gov.au

Please visit our website to view our full warranty terms and conditions:

<http://www.lifespankids.com.au/Warranty-Policy-Kids>

Please send all warranty and support inquiries through our ticketing system via the email address:

support@lifespankids.com.au.