

DAKOTA TEEPEE OWNER'S MANUAL

GENERAL SAFETY INSTRUCTIONS

1.1 PURPOSE

This product is intended for indoor, home, domestic use only. It is not suitable for commercial or medical use.

1.2 RISK OF INJURIES

- Do not use the product if it is damaged or defective. If it is damaged or defective, please contact a qualified technician.
- Check the product before each use. Defective parts must be changed immediately as they can impair the function and the safety of the product.
- No more than one person to use the product at the same time.
- Use the product only on even and non-slip surfaces. Keep sufficient space around for safety.

1.3 PRODUCT DAMAGE

- Do not make alterations to the product. Only use original spare parts. Only qualified technicians should carry out repairs – improper repairs can lead to danger for the user. Use this product only as described in this manual.

1.4 ASSEMBLY ADVICE

- The assembly of the product must be done carefully and by an able-bodied adult. If in any doubt, ask a technically qualified person.
- Before you start with the assembly, read the instructions carefully.
- Remove all packaging materials and lay down all parts on an open space. This gives you an overview and simplifies the assembly procedure.
- Check with the parts list that all parts are available. Dispose of the packaging material when the assembly is completed.
- Beware that when using tools or doing technical work, there is always a risk of injuries. Assemble the product with care.

- Create a danger free environment; for example, do not let tools lay around the workspace. Store the packaging material in a way that cannot cause any danger.
- After installing the product according to the instruction manual, ensure all screws, bolts and nuts are correctly installed and tightened and that all joints are secure.

WARNING!

- **Keep away from fire.**
- **The disassembled teepee contains small parts which pose a choking hazard to children under 3.**

WARRANTY

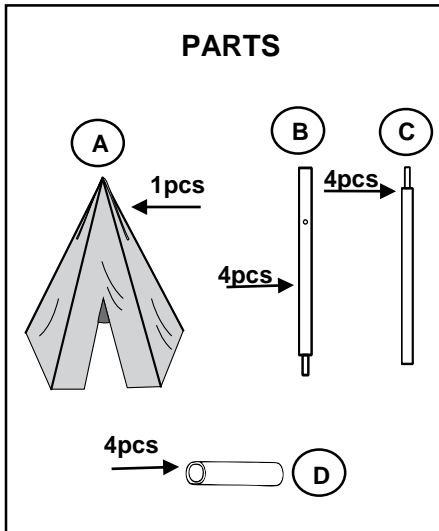
AUSTRALIAN CONSUMER LAW

Many of our products come with a guarantee or warranty from the manufacturer. In addition, they come with guarantees that cannot be excluded under the Australian Consumer law. You are entitled to a replacement or refund for a major failure and compensation for any other reasonably foreseeable loss or damage. You are entitled to have the goods repaired or replaced if the goods fail to be of acceptable quality and the failure does not amount to a major failure. Full details of your consumer rights may be found at www.consumerlaw.gov.au

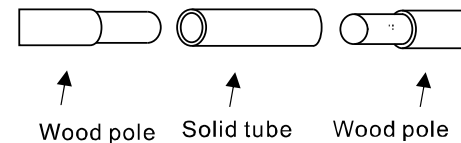
Please visit our website to view our full warranty terms and conditions:
<http://www.lifespankids.com.au/Warranty-Policy-Kids>

Please send all warranty and support inquiries through our ticketing system via the email address: support@lifespankids.com.au.

ASSEMBLY INSTRUCTIONS

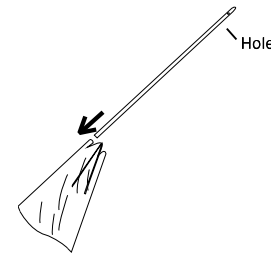


Step 1



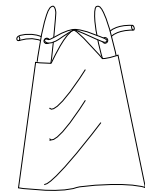
1. Make 4 complete poles by connecting 1x Part B (top pole) to Part C (bottom pole) with Part D (solid tube).

Step 2



1. Insert the 4x poles inside the elastic cord of Part A (tent canvas). Make sure part without the hole goes in first.

Step 3



1. Attach the wooden poles and tent covers together using the cotton string. Starting at the front, thread the string through the eyelet in the canvas and through the hole at the top of the pole. Repeat until all poles are attached to the canvas.
2. Secure the string with a tight knot.

IMPORTANT:
The owner's manual contains safety, assembly, use and maintenance instructions. The product must be assembled by an adult who has read and understood these instructions. Keep the packaging away from children and dispose of all packaging before use.

For the installer and your children's safety, it is important to fully read and understand the instructions and safety hazards before commencing the assembly of the product.