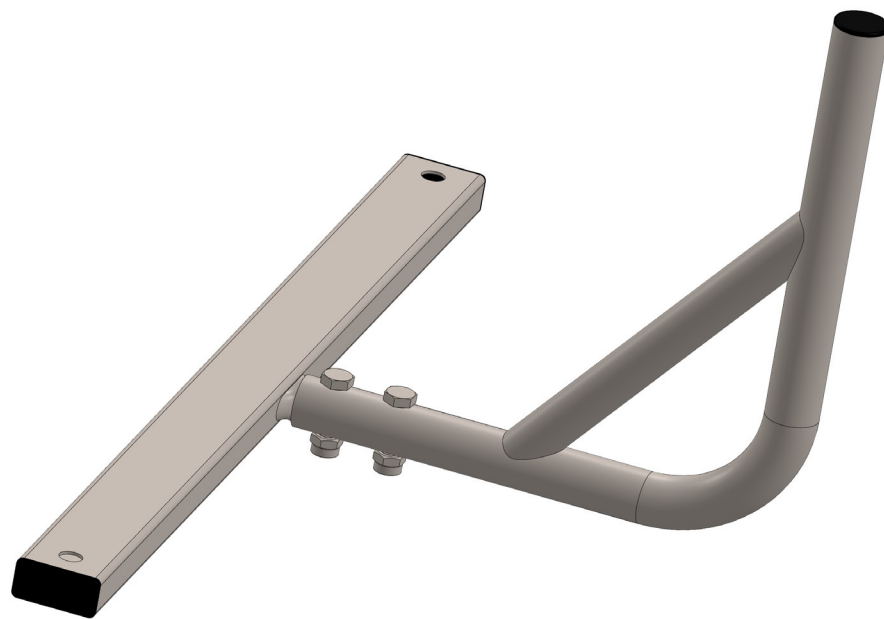


USER MANUAL

Swish Basketball Hoop with Bracket to Suit Stanley Monkey Bars



Find the Digital
Manual Online



WARNING: The disassembled product may contain small parts which pose a choking hazard to children under 3.

IMPORTANT:

This product may contain sharp points and small parts prior to assembly. The owner's manual contains safety, assembly, use and maintenance instructions. This product must be assembled by an adult who has read and understood these instructions. Keep the packaging away from children and dispose of all packaging before use.

For the installer and your children's safety, it is important to fully read and understand the instructions and safety hazards before commencing the assembly of the product.

NOTE:

This manual should not be used to guide your purchasing decision. Your product, and the contents inside its carton, may vary from what is listed in this manual. This manual may also be subject to updates or changes. Updated manuals are available through our website at www.lifespankids.com.au.

TABLE OF CONTENTS

I. GENERAL SAFETY INSTRUCTIONS	3
1.1 Danger for Children	3
1.2 Risk of Injuries	3
1.3 Product Damage	3
1.4 Assembly Advice	4
II. SAFETY INSTRUCTIONS	5
III. ASSEMBLY INSTRUCTIONS	7
IV. MAINTENANCE	11
V. WARRANTY	12

I. GENERAL SAFETY INSTRUCTIONS

NOTE: This product is intended for outdoor domestic use only.

1.1 DANGER FOR CHILDREN



WARNING: No eating while using the product at the same time.

- Children do not recognize potential dangers from this product. The unassembled product must be stored out of reach of children and pets.
- This product may only be used with adult supervision at all times.
- The packaging material is not suitable for children due to choking and suffocation hazards.

1.2 RISK OF INJURIES

- Do not use the product if it is damaged or defective. If it is damaged or defective, please contact a qualified technician.
- Check the product before each use. Defective parts must be changed immediately as they can impair the function and the safety of the product.
- Adhere to the weight loading and user at a time as specified on the product manual or website product specifications.
- Use the product only on even and non-slipping surfaces. Never use it near water and keep sufficient space around for safety.
- Beware of moving parts such as the springs or elastics, which could catch your arms and legs. Do not place any objects or body parts in the product's openings.

1.3 PRODUCT DAMAGE

- Do not make alterations to the product. Only use original spare parts. Qualified technicians should only carry out repairs – improper repairs can lead to danger for the user. Use this product only as described in this manual.

1.4 ASSEMBLY ADVICE

- The product should not be installed over concrete, asphalt or any hard surface. We recommend installing on grass area or dirt ground with playground wood-chips (mulch) or other impact absorbing ground cover on top (see page 6).
- The assembly of the product must be done carefully and by an able-bodied adult. If in any doubt, ask a technically qualified person.
- Before you start with the assembly, read the instructions carefully.
- Remove all packaging materials and lay down all parts on an open space. This gives you an overview and simplifies the assembly procedure.
- Check with the parts list that all parts are available. Dispose of the packaging material when the assembly is completed.
- Beware that when using tools or doing technical work, there is always a risk of injuries. Assemble the product with care.
- Create a danger free environment; for example, do not let tools lay around the workspace. Store the packaging material in a way that cannot cause any danger.
- After installing the product according to the instruction manual, ensure all screws, bolts and nuts are correctly installed and tightened and that all joints are secure.
- Reasonable space must be kept between the product and possible sources of danger, such as other equipment swimming pools and fences.
- The product must be assembled correctly before use.
- Your play structure must be installed on a flat horizontal surface with a minimum of 2m between it and any structure or obstacle such as a fence, garage house, tree branches, cloths lines, or electric cables.
- Modifications made to the original product shall be carried out according to the instructions of the manufacturer.
- The product must always be used in a well-lit area.
- Do not place anything under the product.
- Use gloves during assembly and disassembly.
- Outdoor products should be equipped with devices to prevent displacement in strong wind conditions (e.g. steel bars in the ground or loads like sandbag or water bags).
- In certain areas during winter, snow buildup and the low temperatures can damage the product. It is recommended to remove snow buildup and to store the product indoors.
- We strongly recommend visual inspections every 3 months to ensure the integrity of the entire product. Replace any parts as necessary.

II. SAFETY INSTRUCTIONS

1. Installation

- Ensure the basketball hoop is securely attached to the swing set structure.
- Follow manufacturer instructions carefully during installation.
- Regularly inspect the hoop and mounting hardware for stability and security.

2. Supervision

- Always supervise children while they are using the basketball hoop.
- Ensure that children are aware of safety rules and proper use.

3. Proper Use

- Do not hang or climb on the hoop or the net.
- Ensure only one child uses the hoop at a time to prevent collisions.
- Use the appropriate size basketball to avoid damage and ensure safety.

4. Clear Area

- Keep the area around the swing set and hoop clear of obstacles and tripping hazards.
- Ensure the surface beneath the swing set is soft and impact-absorbing, such as mulch, sand, or rubber matting.

5. Weather Conditions

- Regularly check for wear and tear caused by weather, especially rust or corrosion.

Consumer Information Sheet for Playground Surfacing Materials

The US Consumer Product Safety Commission (CPSC) estimates that about 100 000 playground equipment-related injuries resulting from falls to the ground surface are treated annually in US hospital emergency rooms. Injuries involving this hazard pattern tend to be among the most serious of all playground injuries, and have the potential to be fatal, particularly when the injury is to the head. The surface under and around playground equipment can be a major factor in determining the injury-causing potential of a fall. It is self-evident that a fall on to a shock-absorbing surface is less likely to cause a serious injury than a fall onto a hard surface. Playground equipment should never be placed on hard surfaces, such as concrete or asphalt, and while grass may appear to be acceptable, it may quickly turn to hard-packed earth in areas of high traffic. Shredded bark mulch, wood chips, tine sand or the gravel are considered to be acceptable shock absorbing surfaces when installed and maintained at a sufficient depth under and around playground equipment.

Table B.1 lists the maximum height from which a child would not be expected to sustain a life-threatening head injury in a fall on to four different loose-fill surfacing materials if they are installed and maintained at depths of 150 mm, 225 mm and 300 mm.

TABLE B.1: Fall height in millimetres from which a life-threatening head injury would not be expected.

TYPE OF MATERIAL	DEPTH OF SURFACING MATERIAL		
	150mm	225mm	300mm
Double Shredded Bark Mulch	1800	3000	3300
Wood Chips	1800	2100	3600
Fine Sand	1500	1500	2700
Fine Gravel	1800	2100	3000

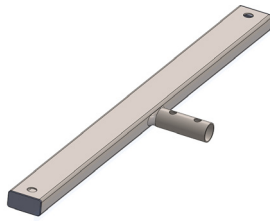
However, it should be recognised that all injuries due to falls cannot be prevented, no matter what surfacing material is used.

It is recommended that a shock absorbing material extend a minimum of 1800mm in all directions from the perimeter of stationary equipment such as climbing frames and slides. However, because children may deliberately jump from a moving swing, the shock absorbing material should extend in the front and rear of a swing a minimum distance of twice the height of the pivot point measured from a point directly beneath the pivot on the supporting structure.

This information is intended to assist in comparing the relative shock-absorbing properties of various materials. No particular material is recommended over another. However, each material is only effective when properly maintained. Materials should be checked periodically and replenished to maintain correct depth as determined necessary for the equipment in question. The choice of a material depends on the type and height of the playground equipment, the availability of the material in a particular area, and its cost.

III. ASSEMBLY INSTRUCTIONS

PARTS LIST - BRACKET



LK 2081



LK 2082



M10 x 115MM
2pcs.



Nylock Nut M10
2pcs.



Nylock Nut M8
2pcs.

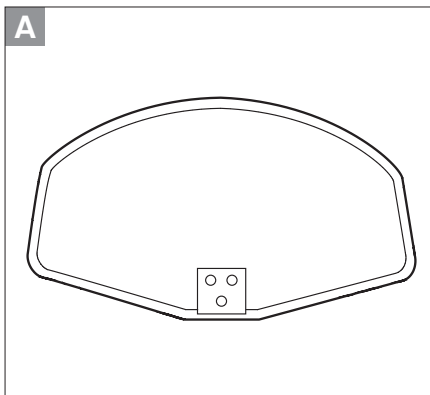


M8 x 35MM
2pcs.

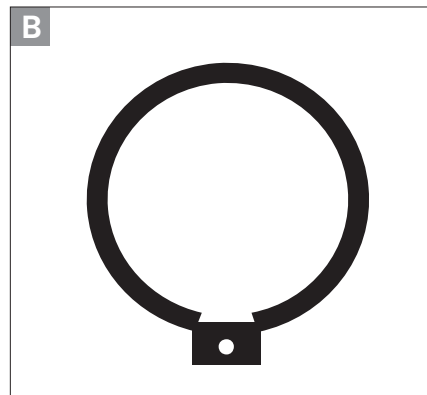


Washer M10
2pcs.

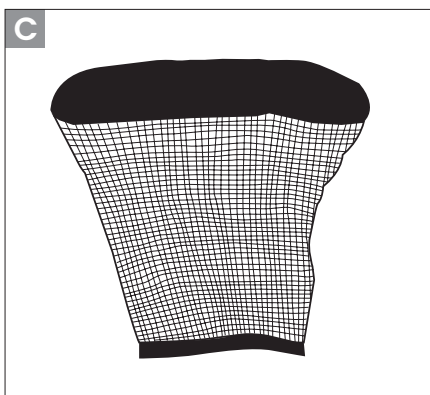
PACK CONTENTS - SWISH BASKETBALL HOOP



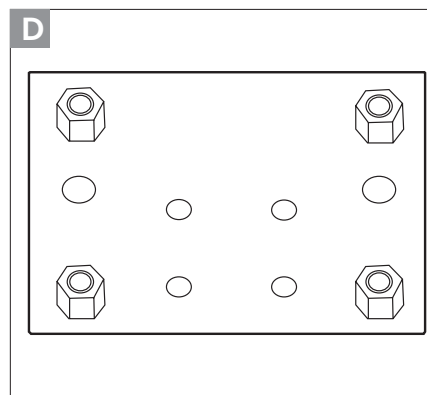
Backboard
x1



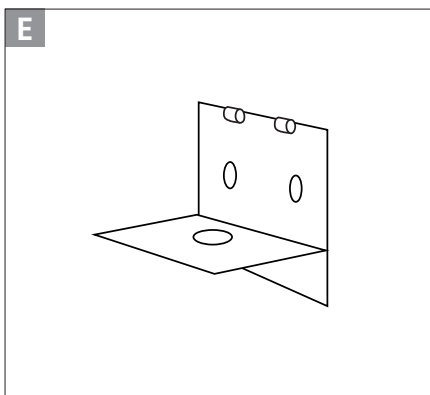
Ring
x1



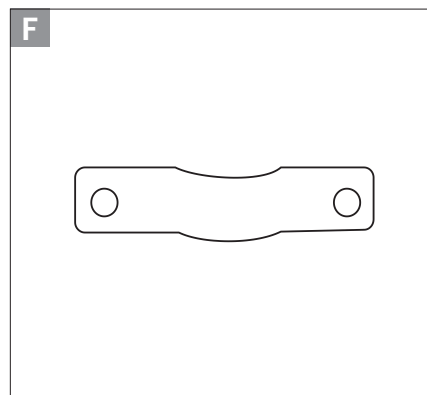
Net
x1



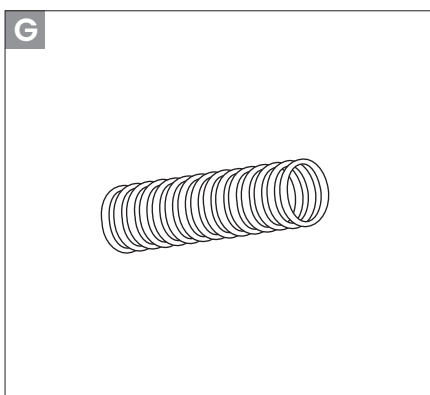
Flat Plate
x2



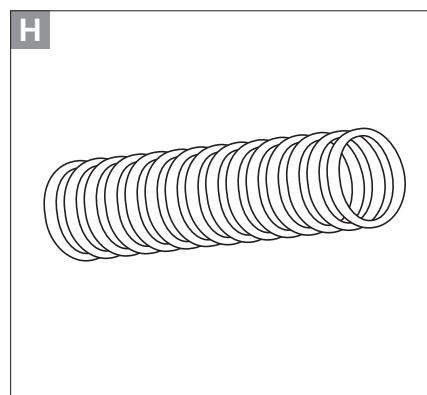
Connection Plate
x1



Clamp
x1



Short
x1



Long
x1

SET UP

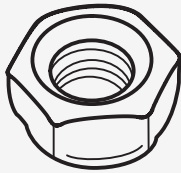
FITTINGS

L-1



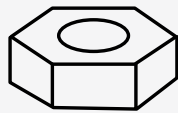
M6 x 3

L-2



M8 x 5

L-3



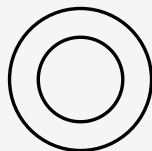
M5 x 1

M-1



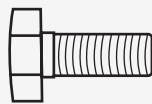
M6 x 6

M-2



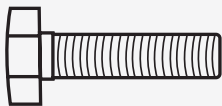
M8 x 7

1 x 2



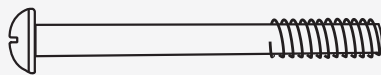
M8 x 12mm

2 x 3



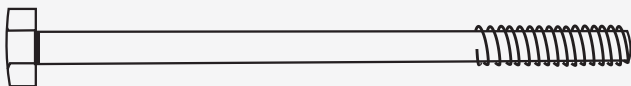
M6 x 36mm

3 x 1

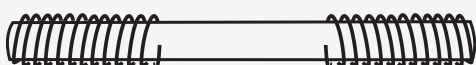


M5 x 75mm

4 x 1 M8 x 100mm



5 x 4 M8 x 40mm



PREPARATION

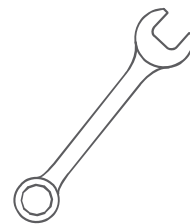
Remove all parts and hardware from the carton and place them on a clean soft surface. Check carefully to make sure nothing is missing. Dispose of all packaging material properly.

Please recycle.

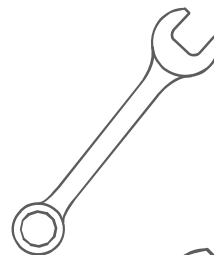
THE FOLLOWING ITEMS ARE REQUIRED FOR ASSEMBLY (NOT INCLUDED)

Two adjustable wrenches; or wrenches or sockets in the following sizes: 10mm, 13mm and 17mm

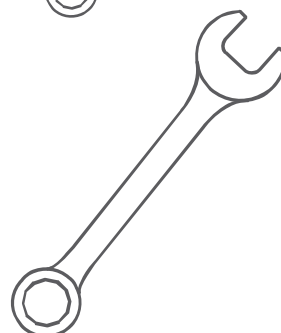
TOOL



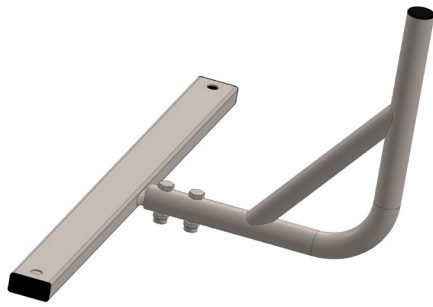
10mm



13mm



17mm

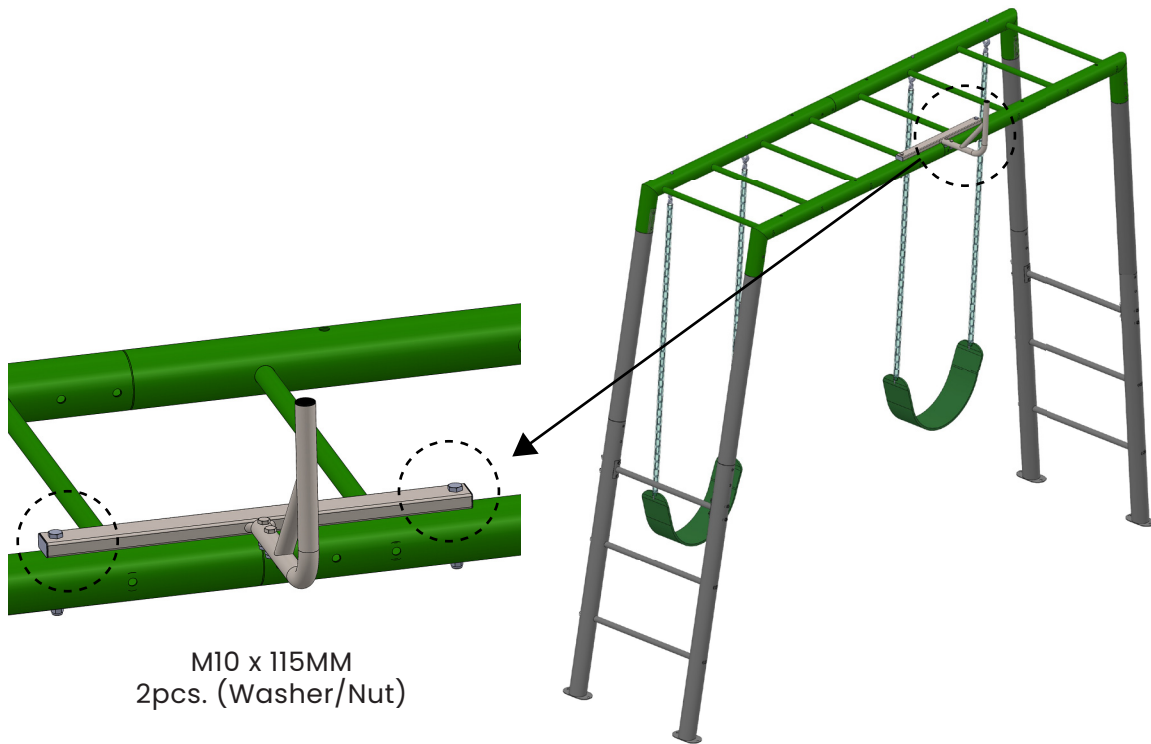


M8 x 35MM
2pcs.

NOTE:

This part is used for fitting a basketball board to LK206 Stanley Heavy Duty Monkey bars.

Check that all parts are there before set up.
Spanners are required for assembly and gloves are recommended for safety.



M10 x 115MM
2pcs. (Washer/Nut)



WARNING:

Small parts within the carton.
Keep away from children - choking hazard.

IV. MAINTENANCE

1. Regular Inspections

- Perform a thorough inspection of the basketball hoop and mounting hardware at least once a month.
- Check for any signs of wear, damage, or rust and address them promptly.

2. Tightening Hardware

- Ensure all nuts, bolts, and screws are tight and secure.
- Replace any damaged or missing hardware immediately.

3. Cleaning

- Clean the hoop and net regularly to remove dirt, debris, and any potential rust.
- Use a mild soap solution and a soft cloth or sponge for cleaning.
- Rinse thoroughly with water and dry completely.

4. Net Maintenance

- Check the net for any signs of wear, fraying, or damage.
- Replace the net if it shows significant signs of wear to prevent it from breaking during use.

5. Lubrication

- Apply a light lubricant to any moving parts, such as swivel joints or adjustable mechanisms, to ensure smooth operation.

6. Storage

- If the swing set basketball hoop is not used for an extended period, consider removing it and storing it indoors to protect it from the elements.
- Cover the hoop with a weather-resistant cover if it cannot be removed.

V. WARRANTY

AUSTRALIAN CONSUMER LAW

Many of our products come with a guarantee or warranty from the manufacturer. In addition, they come with guarantees that cannot be excluded under the Australian Consumer Law. You are entitled to a replacement or refund for a major failure and compensation for any other reasonably foreseeable loss or damage.

You are entitled to have the goods repaired or replaced if the goods fail to be of acceptable quality and the failure does not amount to a major failure. Full details of your consumer rights may be found at www.consumerlaw.gov.au.

Please visit our website to view our full warranty terms and conditions:
www.lifespankids.com.au/Warranty-Policy-Kids

WARRANTY AND SUPPORT

Any claim against this warranty must be made through your original place of purchase. Proof of purchase is required before a warranty claim may be processed. If you have purchased this product from the Official Lifespan Kids website, please visit www.lifespankids.com.au/warranty-form

For support outside of warranty, if you wish to purchase replacement parts or request a repair or service, please visit www.lifespankids.com.au/warranty-form and fill in our Repair/Service Request Form or Parts Purchase Form.

