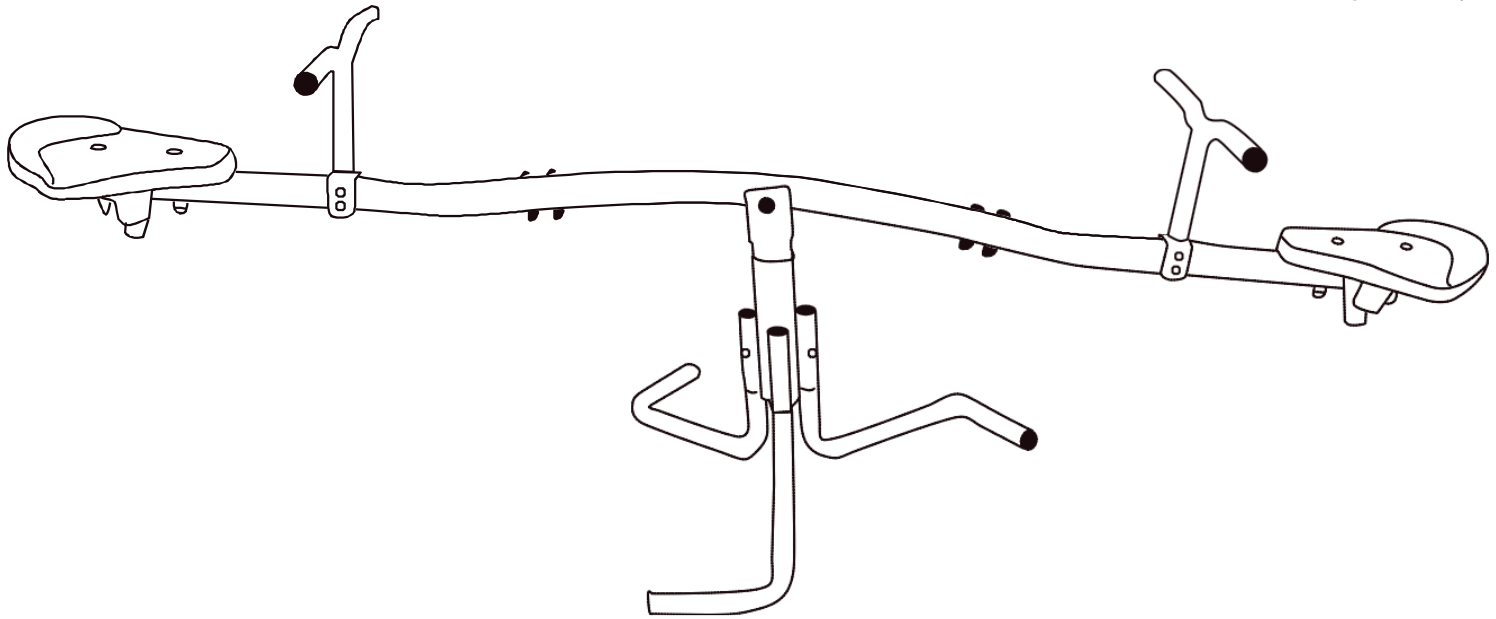


PE05 Twirl Seesaw

Instruction Manual



It is very important that you read and understand the instructions before assembling and using the seesaw.

IMPORTANT

Read the following statements and warnings to avoid serious injury.

Warning.

- Max 50 kg.
- Only for domestic use.
- Indoor/Outdoor use.
- Maximum 2 users.
- Read the instructions.
- The seesaw shall be assembled by an adult in accordance with the assembly instructions and then checked before the first use.
- Empty pockets and hands before rocking.
- Do not use when the seesaw is wet.
- Do not eat while rocking.
- Do not jump from the seesaw.
- Limit the time of continuous usage (take regular breaks).
- Do not use in strong wind conditions and secure the seesaw.
- Take off any jewellery.

Placement of the seesaw

Do not place the seesaw on a concrete floor or other hard surfaces. The ideal placement is a level, stable surface like a lawn. There must be at least 2 meters of space around the seesaw. Check that there are no wires, tree branches, fences or other possible hazards above and around the seesaw. The seesaw should not be placed near any pools, swings, slides, climbing frames, trampolines or other obstructive installations. The seesaw is not intended to be buried in the ground.

Weather conditions

The seesaw should not be used when wet. In winter conditions, please disassemble the seesaw and store all parts inside. Always secure the seesaw to the ground using Ground Stakes/Anchors (included). Do not use in strong wind conditions.

How to use

Take it easy at first. Don't try difficult moves.
Be sure to wear proper shoes, e.g. gym shoes, or be barefoot when rocking. Never dismount by jumping off the seesaw. Always climb off.
Don't use the seesaw under the influence of drugs or alcohol.
Always have someone else watching while you play. If you should injure yourself you will have someone to assist you.

Care and maintenance

This seesaw was designed and manufactured with quality materials and craftsmanship. If proper care and maintenance is provided, it will provide all seesaws with years of exercise, fun, and enjoyment as well as reduce the risk of injury. Please follow the guidelines listed below.

Installments of additional accessories must be carried out as per manufacturer's instructions.

This seesaw is designed to withstand a certain amount of weight and use. Please make sure that maximum two persons at any one time use the seesaw. Users should either wear socks, gymnastics shoes, or be barefoot when using the seesaw. Users should remove all sharp objects from their person prior to using the seesaw. Regularly check that nuts and bolts are securely tightened, since they may come loose over time. Check sharp edges and all coverings and replace when required.

Always inspect the seesaw before each use for worn, abused or missing parts. A number of conditions could arise that may increase your chances of getting injured. Please be aware of:

- Bent or broken frame parts
- Bent or broken seats
- Damaged, missing, or insecurely attached nuts and bolts
- Protrusions of any types (especially sharp types) on the frame

Note. Sunlight, rain, snow and extreme temperatures reduce the strength of these parts over time.

IF YOU FIND ANY OF THE PREVIOUS CONDITIONS, OR ANYTHING ELSE THAT YOU FEEL COULD CAUSE HARM TO ANY USER, THE SEESAW SHOULD BE DISASSEMBLED OR SECURED FROM USE UNTIL THE CONDITION(S) HAS BEEN RESOLVED.

Do not modify the seesaw or any of its parts.

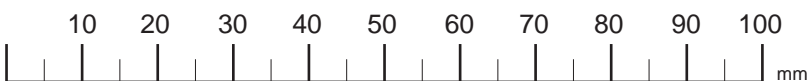
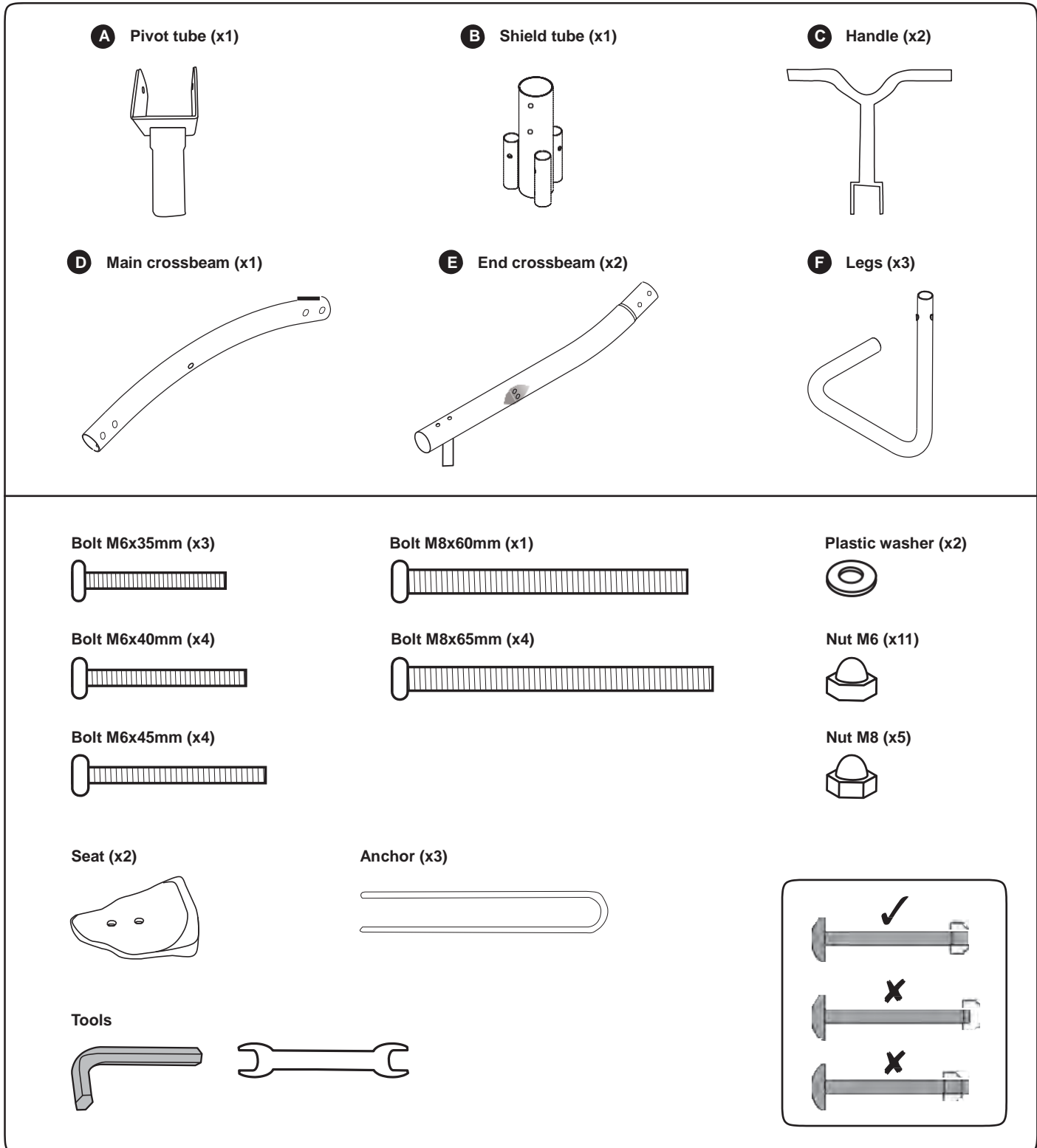
Keep this instruction manual.

Assembly

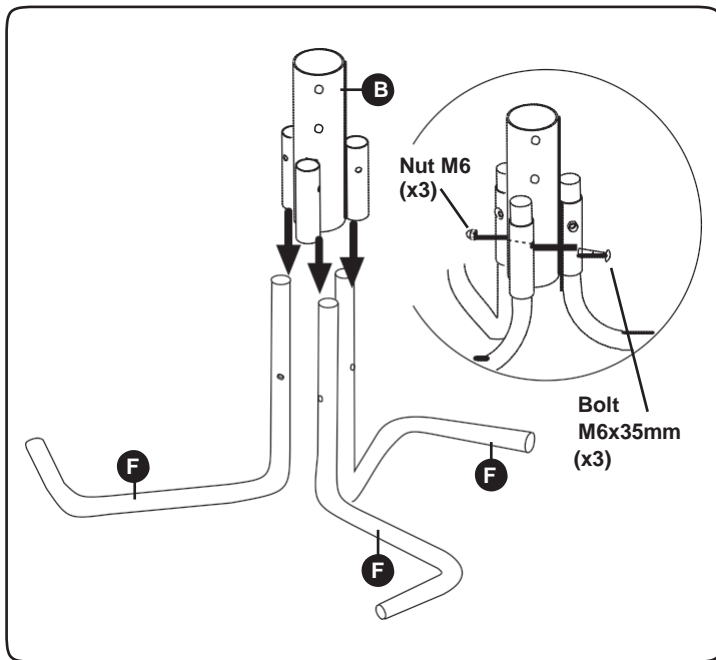
Please read the assembly instructions fully before starting to assemble the seesaw.

Start first by checking that you have all the required parts. The reference number of each part will be used in the instructions to guide you.

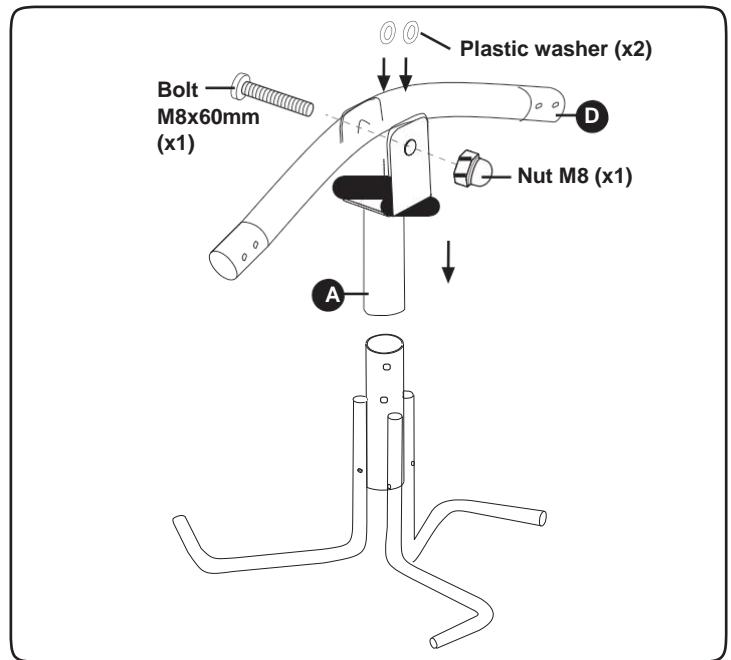
Seesaw Part List:



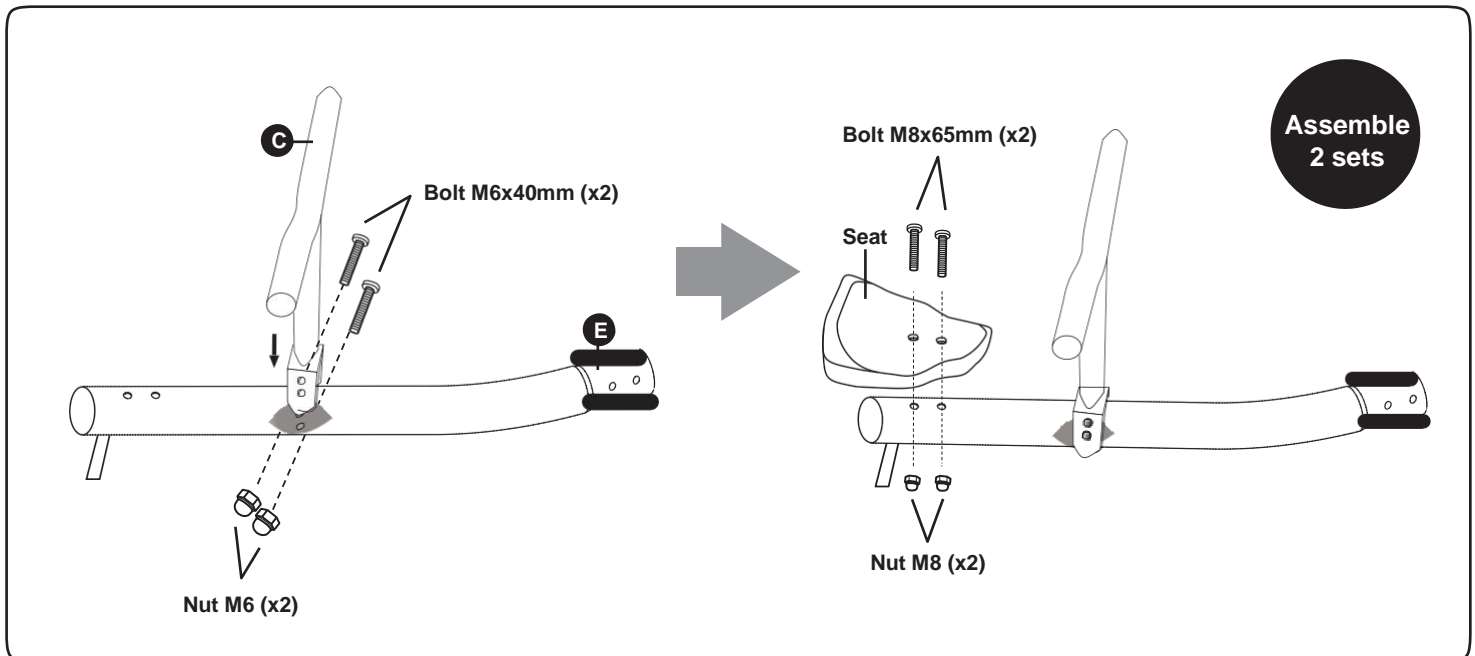
Step 1



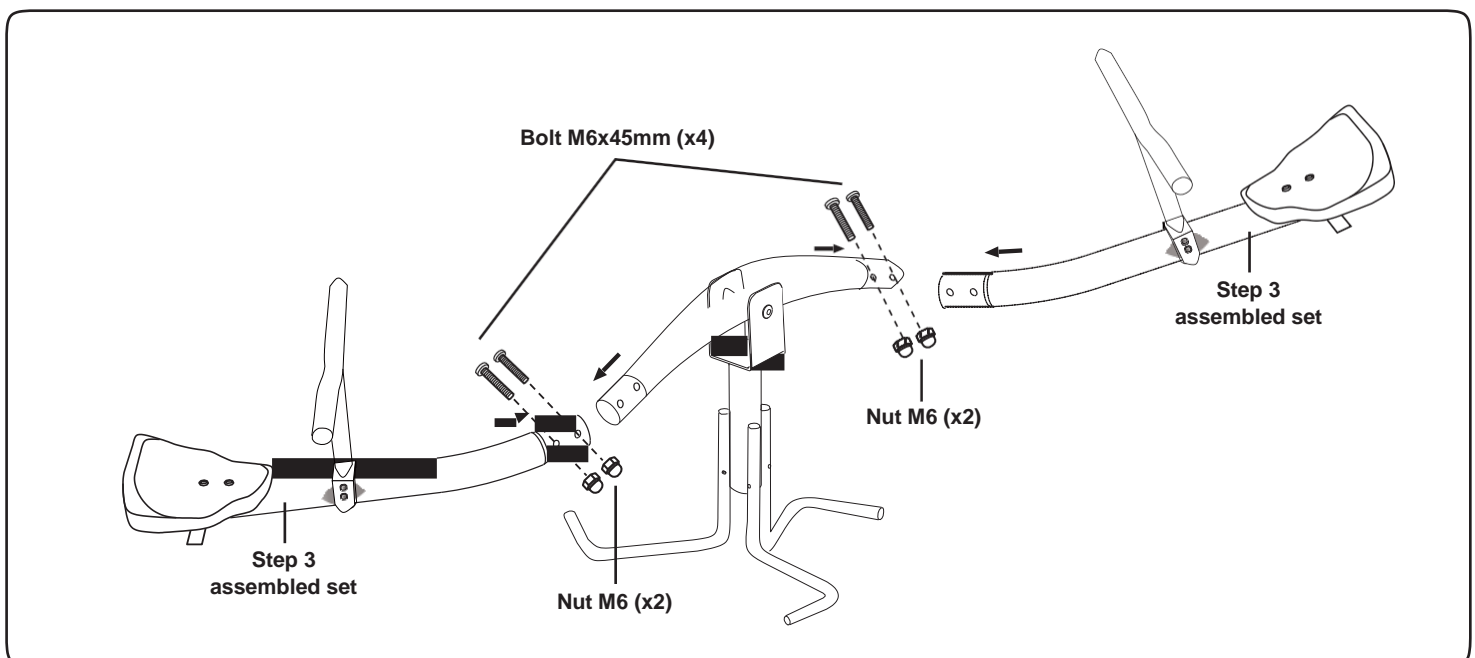
Step 2

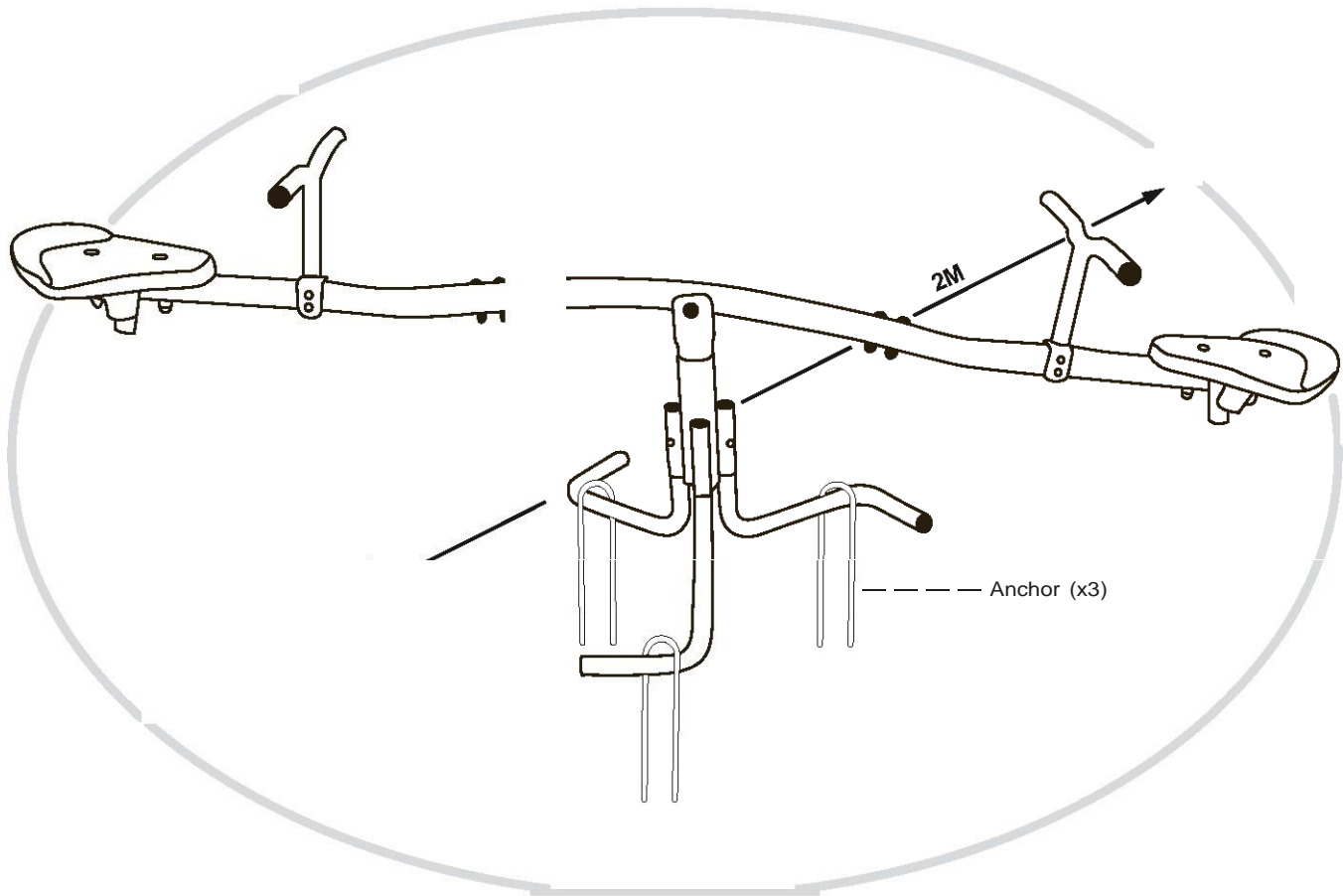


Step 3



Step 4





Now go back and tighten all screws firmly and check the spring-loaded joints

Warranty

AUSTRALIAN CONSUMER LAW

Many of our products come with a guarantee or warranty from the manufacturer. In addition, they come with guarantees that cannot be excluded under the Australian Consumer Law. You are entitled to a replacement or refund for a major failure and compensation for any other reasonably foreseeable loss or damage.

You are entitled to have the goods repaired or replaced if the goods fail to be of acceptable quality and the failure does not amount to a major failure. Full details of your consumer rights may be found at www.consumerlaw.gov.au

Please visit our website to view our full warranty terms and conditions:

<http://www.lifespankids.com.au/Warranty-Policy-Kids>